

À des fins de recherche uniquement

# Anticorps Polyclonal de lapin anti-RGS1



Numéro de catalogue: 12547-1-AP

## Informations de base

<b>Numéro de catalogue:</b> 12547-1-AP	<b>Numéro d'acquisition GenBank:</b> BC015510	<b>Méthode de purification:</b> Purification par affinité contre l'antigène
<b>Taille:</b> 150ul , Concentration: 600 µg/ml by Nanodrop and 160 µg/ml by Bradford method using BSA as the standard;	<b>Identification du gène (NCBI):</b> 5996	<b>Dilutions recommandées:</b> WB 1:500-1:1000
<b>Hôte:</b> Lapin	<b>Nom complet:</b> regulator of G-protein signaling 1	
<b>Isotype:</b> IgG	<b>MW calculé:</b> 196 aa, 22 kDa	
<b>Immunogen Catalog Number:</b> AG3315	<b>MW observés:</b> 30 kDa	

## Applications

<b>Applications testées:</b> WB, ELISA	<b>Contrôles positifs:</b> WB : cellules HL-60, cellules HepG2, tissu d'intestin grêle de rat, tissu d'intestin grêle de souris
<b>Spécificité de l'espèce:</b> Humain, rat, souris	

## Informations générales

RGS1 (Regulator of G-protein signaling 1) is also named as 1R20, BL34 and IER1. RGS1 encodes a member of the regulator of G-protein signaling family, which can act as a GTPase-activating protein (GAP), increasing the rate of conversion of the GTP to GDP, driving G-protein into its inactive GDP-bound form, hence attenuating or turning off G-protein-coupled receptor signaling (PMID: 8774882). RGS1 is highly expressed in immune cells including T cells, B cells, natural killer (NK) cells, dendritic cells and monocytes, suggesting a role for RGS1 in immune cell regulation (PMID: 34956194). RGS1 was highly expressed in tumor tissues and correlated with shorter overall survival, which also appeared in several previous studies, including multiple myeloma, melanoma, nonsmall cell lung cancer, gastric cancer , diffuse large B-cell lymphoma (PMID: 34956194). RGS1 protein, located at the cytoplasm and membrane, is enriched in tumor tissues compared with normal tissues. RGS1 was identified as a HIF-dependent hypoxia target that dampens cell migration and signal transduction (PMID: 24686421).

## Stockage

**Stockage:**  
Stocker à -20°C. Stable pendant un an après l'expédition.  
**Tampon de stockage:**  
PBS avec azoture de sodium à 0,02 % et glycérol à 50 % pH 7,3  
L'aliquotage n'est pas nécessaire pour le stockage à -20C

\*\*\* Les 20ul contiennent 0,1% de BSA.

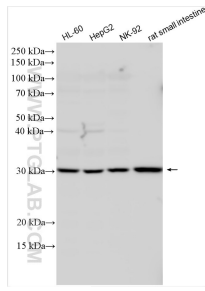
For technical support and original validation data for this product please contact:

T: 1 (888) 4PTGLAB (1-888-478-4522) (toll free in USA), or 1(312) 455-8498 (outside USA)

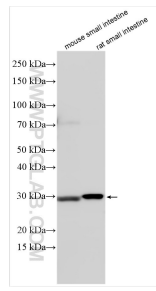
E: [proteintech@ptglab.com](mailto:proteintech@ptglab.com)  
W: [ptglab.com](http://ptglab.com)

This product is exclusively available under Proteintech Group brand and is not available to purchase from any other manufacturer.

## Données de validation sélectionnées



Various lysates were subjected to SDS PAGE followed by western blot with 12547-1-AP (RGS1 antibody) at dilution of 1:600 incubated at room temperature for 1.5 hours.



Various lysates were subjected to SDS PAGE followed by western blot with 12547-1-AP (RGS1 antibody) at dilution of 1:600 incubated at room temperature for 1.5 hours.