

À des fins de recherche uniquement

# Anticorps Polyclonal de lapin anti-Factor XII



Numéro de catalogue: 12551-1-AP

Phare

3 Publications

## Informations de base

Numéro de catalogue: 12551-1-AP	Numéro d'acquisition GenBank: BC012390	Méthode de purification: Purification par affinité contre l'antigène
Taille: 150ul, Concentration: 600 µg/ml by Nanodrop and 200 µg/ml by Bradford method using BSA as the standard;	Identification du gène (NCBI): 2161	Dilutions recommandées: WB 1:1000-1:4000 IHC 1:50-1:500
Hôte: Lapin	Nom complet: coagulation factor XII (Hageman factor)	
Isotype: IgG	MW calculé 615 aa, 68 kDa	
Immunogen Catalog Number: AG3401	MW observés: 28-30 kDa	

## Applications

### Applications testées:

IHC, WB, ELISA

### Demandes citées:

IF, IHC, WB

### Spécificité de l'espèce:

Humain, rat, souris

### Espèces citées:

Humain, souris

**Remarque-IHC: il est suggéré de démasquer l'antigène avec un tampon de TE buffer pH 9,0; (\*) A défaut, le démasquage de l'antigène peut être effectué avec un tampon citrate pH 6,0.**

### Contrôles positifs:

WB : cellules HepG2, cellules Jurkat

IHC : tissu hépatique humain, tissu de cancer du côlon humain

## Informations générales

Factor XII (F XII, Hageman factor) is a 80 kDa, single chain glycoprotein that circulates in blood as an inactive zymogen. F XII plays an important role in blood coagulation, fibrinolysis, and kinin generation. Factor XII is activated by kallikrein in alpha-factor XIIa, which is further converted by trypsin into beta-factor XIIa. Alpha-factor XIIa is composed of a 52 kDa NH<sub>2</sub>-terminal heavy chain, called coagulation factor XIIa heavy chain, and a 28 kDa COOH-terminal light chain, called coagulation factor XIIa light chain, connected by a disulfide bond. Beta-factor XIIa is composed of 2 chains linked by a disulfide bond, an N-terminal nonapeptide, called beta-factor XIIa part 1, and coagulation factor XIIa light chain, also known in this context as beta-factor XIIa part 2.

## Publications notables

Autrice	Pubmed ID	Journal	Application
Kai Guo	34514877	Thyroid	IHC
Kerstin Göbel	27188843	Nat Commun	IF
Yan Meng	33760144	Int J Mol Med	WB,IHC

## Stockage

### Stockage:

Stocker à -20°C. Stable pendant un an après l'expédition.

### Tampon de stockage:

PBS avec azoture de sodium à 0,02 % et glycérol à 50 % pH 7,3

L'aliquoteage n'est pas nécessaire pour le stockage à -20C

\*\*\* Les 20ul contiennent 0,1% de BSA.

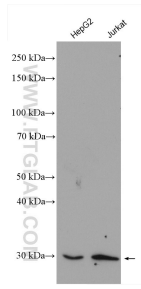
For technical support and original validation data for this product please contact:

T: 1 (888) 4PTGLAB (1-888-478-4522) (toll free in USA), or 1(312) 455-8498 (outside USA)

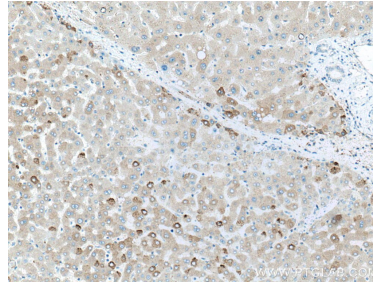
E: proteintech@ptglab.com  
W: ptglab.com

This product is exclusively available under Proteintech Group brand and is not available to purchase from any other manufacturer.

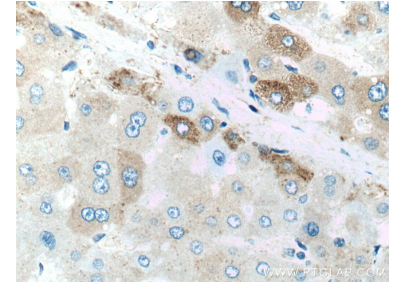
## Données de validation sélectionnées



Various lysates were subjected to SDS PAGE followed by western blot with 12551-1-AP (Factor XII antibody) at dilution of 1:2000 incubated at room temperature for 1.5 hours.



Immunohistochemical analysis of paraffin-embedded human liver tissue slide using 12551-1-AP (Factor XII antibody) at dilution of 1:200 (under 10x lens). Heat mediated antigen retrieval with Tris-EDTA buffer (pH 9.0).



Immunohistochemical analysis of paraffin-embedded human liver tissue slide using 12551-1-AP (Factor XII antibody) at dilution of 1:200 (under 40x lens). Heat mediated antigen retrieval with Tris-EDTA buffer (pH 9.0).