

À des fins de recherche uniquement

Anticorps Polyclonal de lapin anti-Neuroserpin



Numéro de catalogue: 12558-1-AP

Informations de base

Numéro de catalogue: 12558-1-AP	Numéro d'acquisition GenBank: BC018043	Méthode de purification: Purification par affinité contre l'antigène
Taille: 150ul , Concentration: 260 µg/ml by Nanodrop and 220 µg/ml by Bradford method using BSA as the standard;	Identification du gène (NCBI): 5274	Dilutions recommandées: WB 1:500-1:1000
Hôte: Lapin	Nom complet: serpin peptidase inhibitor, clade I (neuroserpin), member 1	
Isotype: IgG	MW calculé 410 aa, 47 kDa	
Immunogen Catalog Number: AG3275	MW observés: 46 kDa	

Applications

Applications testées: WB, ELISA	Contrôles positifs: WB : tissu cérébral de souris,
Spécificité de l'espèce: Humain, rat, souris	

Informations générales

Neuroserpin is a member of the serpin family of serine protease inhibitors predominantly expressed in the nervous system, such as the cerebral cortex, hippocampus and the spinal cord. Neuroserpin exerts protective effects in neurons against excitotoxicity both in vitro and in vivo. Its proteolytic inhibitory activity is shown to protect neurons against damage caused by plasmin activation. Mice overexpressing neuroserpin exhibited loss of tPA activity in the brain. Overexpression of neuroserpin in primary neurons leads to increased dendritic arborization and altered dendritic spine shape.

Stockage

Stockage:
Stocker à -20°C. Stable pendant un an après l'expédition.
Tampon de stockage:
PBS avec azoture de sodium à 0,02 % et glycérol à 50 % pH 7,3
L'aliquotage n'est pas nécessaire pour le stockage à -20C

*** Les 20ul contiennent 0,1% de BSA.

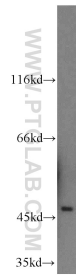
For technical support and original validation data for this product please contact:

T: 1 (888) 4PTGLAB (1-888-478-4522) (toll free in USA), or 1(312) 455-8498 (outside USA)

E: proteintech@ptglab.com
W: ptglab.com

This product is exclusively available under Proteintech Group brand and is not available to purchase from any other manufacturer.

Données de validation sélectionnées



mouse brain tissue were subjected to SDS PAGE followed by western blot with 12558-1-AP (Neuroserpin antibody) at dilution of 1:500 incubated at room temperature for 1.5 hours.