

À des fins de recherche uniquement

Anticorps Polyclonal de lapin anti-AMPK Gamma 2



Numéro de catalogue: 12568-1-AP

2 Publications

Informations de base

Numéro de catalogue:
12568-1-AP

Taille:
150ul, Concentration: 260 µg/ml by Nanodrop and 173 µg/ml by Bradford method using BSA as the standard;

Hôte:
Lapin

Isotype:
IgG

Immunogen Catalog Number:
AG3214

Numéro d'acquisition GenBank:
BC020540

Identification du gène (NCBI):
51422

Nom complet:
protein kinase, AMP-activated, gamma 2 non-catalytic subunit

MW calculé
569 aa, 63 kDa

MW observés:
63 kDa

Méthode de purification:
Purification par affinité contre l'antigène

Dilutions recommandées:
WB 1:500-1:1000
IHC 1:50-1:500
IF 1:20-1:200

Applications

Applications testées:
IF, IHC, WB, ELISA

Demandes citées:
IF, WB

Spécificité de l'espèce:
Humain, souris

Espèces citées:
Humain

Remarque-IHC: il est suggéré de démasquer l'antigène avec un tampon de TE buffer pH 9,0; (*) A défaut, 'le démasquage de l'antigène peut être effectué avec un tampon citrate pH 6,0.

Contrôles positifs:

WB : tissu cardiaque de souris, cellules HEK-293, cellules HeLa, cellules PC-3, tissu oculaire de souris

IHC : tissu cardiaque humain, tissu de tumeur ovarienne humain, tissu placentaire humain

IF : cellules HeLa,

Informations générales

AMP-activated protein kinase (AMPK) is a heterotrimeric protein composed of a catalytic alpha subunit, a noncatalytic beta subunit, and a noncatalytic regulatory gamma subunit. Various forms of each of these subunits exist, encoded by different genes. AMPK is an important energy-sensing enzyme that monitors cellular energy status and functions by inactivating key enzymes involved in regulating de novo biosynthesis of fatty acid and cholesterol. AMPK gamma2 is a member of the AMPK gamma subunit family. Mutations in this gene have been associated with Wolff-Parkinson-White syndrome, familial hypertrophic cardiomyopathy, and glycogen storage disease of the heart.

Publications notables

Autrice	Pubmed ID	Journal	Application
Zhang Bi-Li BL	23778007	J Cardiol	WB, IF
Yuwen Sheng	34931827	J Med Chem	WB

Stockage

Stockage:

Stocker à -20°C. Stable pendant un an après l'expédition.

Tampon de stockage:

PBS avec azoture de sodium à 0,02 % et glycérol à 50 % pH 7,3

L'aliquotage n'est pas nécessaire pour le stockage à -20C

*** Les 20ul contiennent 0,1% de BSA.

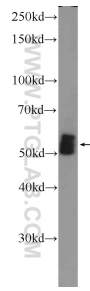
For technical support and original validation data for this product please contact:

T: 1 (888) 4PTGLAB (1-888-478-4522) (toll free in USA), or 1(312) 455-8498 (outside USA)

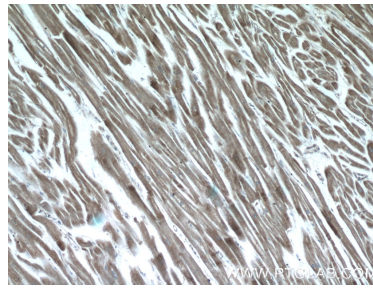
E: proteintech@ptglab.com
W: ptglab.com

This product is exclusively available under Proteintech Group brand and is not available to purchase from any other manufacturer.

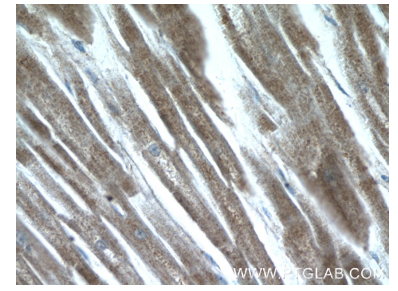
Données de validation sélectionnées



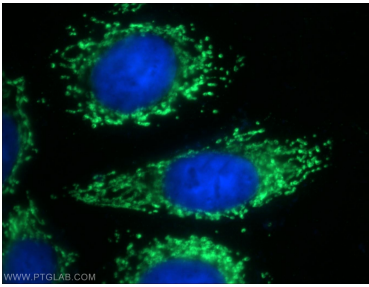
mouse heart tissue were subjected to SDS PAGE followed by western blot with 12568-1-AP (AMPK gamma2 antibody at dilution of 1:600 incubated at 4 degree celsius over night.



Immunohistochemical analysis of paraffin-embedded human heart tissue slide using 12568-1-AP (AMPK gamma2 antibody at dilution of 1:50 (under 10x lens).



Immunohistochemical analysis of paraffin-embedded human heart tissue slide using 12568-1-AP (AMPK gamma2 antibody at dilution of 1:50 (under 40x lens).



Immunofluorescent analysis of HeLa cells using 12568-1-AP (AMPK gamma2 antibody) at dilution of 1:50 and Alexa Fluor 488-conjugated AffiniPure Goat Anti-Rabbit IgG(H+L).