

À des fins de recherche uniquement

# Anticorps Polyclonal de lapin anti-SCFD1



Numéro de catalogue: 12569-1-AP

Phare

5 Publications

## Informations de base

Numéro de catalogue:  
12569-1-AP

Taille:  
150ul, Concentration: 500 µg/ml by Nanodrop and 373 µg/ml by Bradford method using BSA as the standard;

Hôte:  
Lapin

Isotype:  
IgG

Immunogen Catalog Number:  
AG3234

Numéro d'acquisition GenBank:  
BC017734

Identification du gène (NCBI):  
23256

Nom complet:  
sec1 family domain containing 1

MW calculé:  
642 aa, 72 kDa

MW observés:  
66-72 kDa

Méthode de purification:  
Purification par affinité contre l'antigène

Dilutions recommandées:  
WB 1:500-1:2400  
IP 0.5-4.0 ug for IP and 1:500-1:1000 for WB  
IHC 1:50-1:500  
IF 1:50-1:500

## Applications

Applications testées:  
IF, IHC, IP, WB, ELISA

Demandes citées:  
IP, WB

Spécificité de l'espèce:  
Humain, rat, souris

Espèces citées:  
Bactérie, Humain

**Remarque-IHC: il est suggéré de démasquer l'antigène avec un tampon de TE buffer pH 9,0; (\*) A défaut, 'le démasquage de l'antigène peut être effectué avec un tampon citrate pH 6,0.**

Contrôles positifs:

WB: cellules A549, cellules HEK-293T, cellules NIH/3T3, tissu hépatique humain, tissu rénal humain

IP: cellules HeLa,

IHC: tissu de cancer de l'endomètre humain,

IF: cellules HeLa,

## Informations générales

SCFD1, also named as C14orf163, KIAA0917, STXBP1L2, Sly1p and SLY1, belongs to the STXBP/unc-18/SEC1 family. It is a component of the syntaxin-5 SNARE complex which regulates the early secretory pathway of eukaryotic cells at the level of endoplasmic reticulum (ER) to Golgi transport.(PMID:21242315) SCFD1 plays a role in SNARE-pin assembly and Golgi-to-ER retrograde transport via its interaction with COG4. It is involved in vesicular transport between the endoplasmic reticulum and the Golgi.

## Publications notables

Autrice	Pubmed ID	Journal	Application
Xue Shen	30408277	J Appl Microbiol	WB
Guizhen Wang	32687939	Microb Pathog	WB
Hong Huang	35465820	Autophagy	WB,IP

## Stockage

Stockage:

Stocker à -20°C. Stable pendant un an après l'expédition.

Tampon de stockage:

PBS avec azoture de sodium à 0,02 % et glycérol à 50 % pH 7,3

L'aliquotage n'est pas nécessaire pour le stockage à -20C

\*\*\* Les 20ul contiennent 0,1% de BSA.

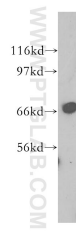
For technical support and original validation data for this product please contact:

T: 1 (888) 4PTGLAB (1-888-478-4522) (toll free in USA), or 1(312) 455-8498 (outside USA)

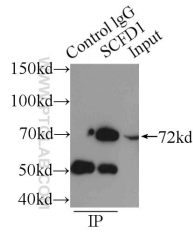
E: proteintech@ptglab.com  
W: ptglab.com

This product is exclusively available under Proteintech Group brand and is not available to purchase from any other manufacturer.

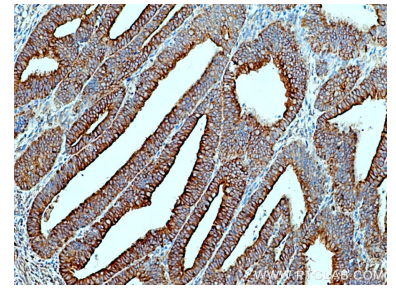
## Données de validation sélectionnées



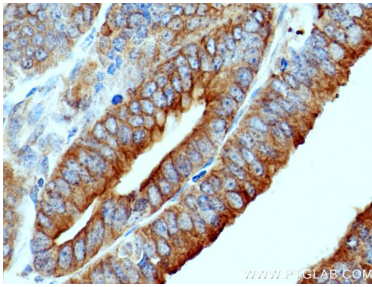
A549 cells were subjected to SDS PAGE followed by western blot with 12569-1-AP (SCFD1 antibody) at dilution of 1:500 incubated at room temperature for 1.5 hours.



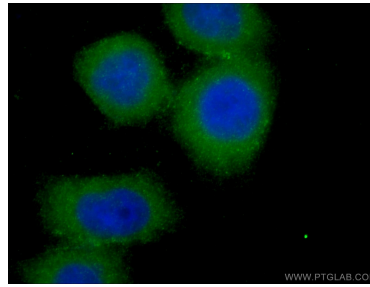
IP Result of anti-SCFD1 (IP:12569-1-AP, 3ug; Detection:12569-1-AP 1:500) with HeLa cells lysate 2150ug.



Immunohistochemical analysis of paraffin-embedded human endometrial cancer tissue slide using 12569-1-AP (SCFD1 antibody) at dilution of 1:200 (under 10x lens). Heat mediated antigen retrieval with Tris-EDTA buffer (pH 9.0).



Immunohistochemical analysis of paraffin-embedded human endometrial cancer tissue slide using 12569-1-AP (SCFD1 antibody) at dilution of 1:200 (under 40x lens). Heat mediated antigen retrieval with Tris-EDTA buffer (pH 9.0).



Immunofluorescent analysis of (-20°C Ethanol) fixed HeLa cells using 12569-1-AP (SCFD1 antibody) at dilution of 1:50 and CoraLite488-Conjugated AffiniPure Goat Anti-Rabbit IgG(H+L).