

À des fins de recherche uniquement

Anticorps Polyclonal de lapin anti-SAMHD1



Numéro de catalogue: 12586-1-AP

Phare

62 Publications

Informations de base

Numéro de catalogue:
12586-1-AP

Taille:
150ul, Concentration: 350 µg/ml by
Nanodrop;

Hôte:
Lapin

Isotype:
IgG

Immunogen Catalog Number:
AG3287

Numéro d'acquisition GenBank:
BC036450

Identification du gène (NCBI):
25939

Nom complet:
SAM domain and HD domain 1

MW calculé
626 aa, 72 kDa

MW observés:
64-72 kDa

Méthode de purification:
Purification par affinité contre
l'antigène

Dilutions recommandées:
WB 1:1000-1:8000
IP 0.5-4.0 ug for IP and 1:200-1:1000
for WB
IHC 1:50-1:500
IF 1:50-1:500

Applications

Applications testées:
FC, IF, IHC, IP, WB, ELISA

Demandes citées:
FC, IF, IHC, IP, WB

Spécificité de l'espèce:
Humain, rat, souris

Espèces citées:
Humain, singe, souris

Remarque-IHC: il est suggéré de démasquer l'antigène avec un tampon de TE buffer pH 9,0; (*) À défaut, le démasquage de l'antigène peut être effectué avec un tampon citrate pH 6,0.

Contrôles positifs:

WB : cellules HepG2, cellules K-562, cellules L02, tissu cardiaque de souris, tissu cardiaque humain, tissu cérébral humain

IP : cellules K-562,

IHC : tissu de cancer du poumon humain, tissu de cancer du côlon humain

IF : cellules HepG2,

Informations générales

SAMHD1, highly expressed by monocytes and monocyte-derived dendritic cells and by monocyte-derived macrophages at a lower extent, is reported as an HIV-1 restriction factor that inhibits the early step of the HIV-1 life cycle. Vpx (virus-like particles containing viral protein X) could overcome this block by interacting with SAMHD1, inducing proteasome-dependent degradation of SAMHD1. Mutations in SAMHD1 cause Aicardi-Goutières syndrome, a genetic encephalopathy with presumed immune pathogenesis. Three alternatively spliced transcripts encoding different isoforms have been described.

Publications notables

Autrice	Pubmed ID	Journal	Application
Jason Neidleman	32990219	Elife	
Simone De Meo	32986788	PLoS Pathog	
Ramona Businger	31548682	Nat Microbiol	IF

Stockage

Stockage:

Stocker à -20°C. Stable pendant un an après l'expédition.

Tampon de stockage:

PBS avec azoture de sodium à 0,02 % et glycérol à 50 % pH 7,3

L'aliquotage n'est pas nécessaire pour le stockage à -20C

*** Les 20ul contiennent 0,1% de BSA.

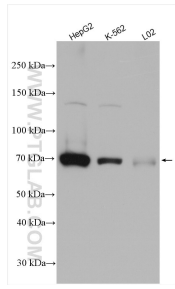
For technical support and original validation data for this product please contact:

T: 1 (888) 4PTGLAB (1-888-478-4522) (toll free in USA), or 1(312) 455-8498 (outside USA)

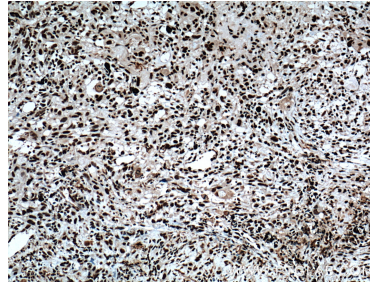
E: proteintech@ptglab.com
W: ptglab.com

This product is exclusively available under Proteintech Group brand and is not available to purchase from any other manufacturer.

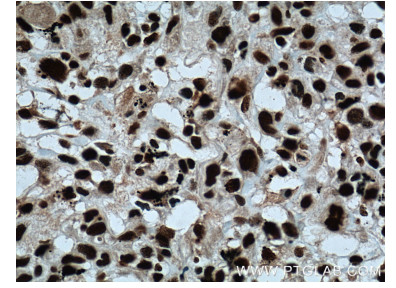
Données de validation sélectionnées



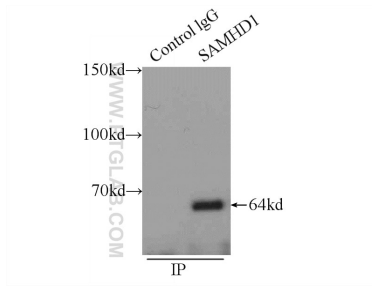
Various lysates were subjected to SDS PAGE followed by western blot with 12586-1-AP (SAMHD1 antibody) at dilution of 1:4000 incubated at room temperature for 1.5 hours.



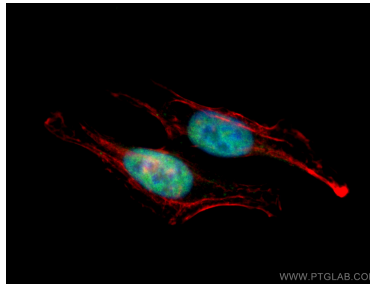
Immunohistochemical analysis of paraffin-embedded human lung cancer tissue slide using 12586-1-AP (SAMHD1 Antibody) at dilution of 1:200 (under 10x Lens). Heat mediated antigen retrieval with Tris-EDTA buffer (pH 9.0).



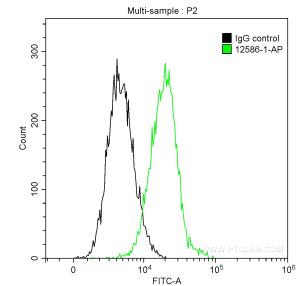
Immunohistochemical analysis of paraffin-embedded human lung cancer tissue slide using 12586-1-AP (SAMHD1 Antibody) at dilution of 1:200 (under 40x lens). Heat mediated antigen retrieval with Tris-EDTA buffer (pH 9.0).



IP Result of anti-SAMHD1 (IP:12586-1-AP, 3ug; Detection:12586-1-AP 1:300) with K-562 cells lysate 2400ug.



Immunofluorescent analysis of (4% PFA) fixed HepG2 cells using SAMHD1 antibody (12586-1-AP) at dilution of 1:200 and CoraLite@488-Conjugated AffiniPure Goat Anti-Rabbit IgG(H+L), CLS94-Phalloidin (red).



1×10^6 THP-1 cells were intracellularly stained with 0.2 ug Anti-Human SAMHD1 (12586-1-AP) and CoraLite@488-Conjugated AffiniPure Goat Anti-Rabbit IgG(H+L) at dilution 1:1000 (green), or 0.2 ug Control Antibody (black). Cells were fixed with 4% PFA and permeabilized with 0.1% Triton X-100.