

À des fins de recherche uniquement

Anticorps Polyclonal de lapin anti-PDCD4



Numéro de catalogue: 12587-1-AP

Phare

29 Publications

Informations de base

Numéro de catalogue: 12587-1-AP	Numéro d'acquisition GenBank: BC026104	Méthode de purification: Purification par affinité contre l'antigène
Taille: 150ul, Concentration: 900 µg/ml by Nanodrop and 600 µg/ml by Bradford method using BSA as the standard;	Identification du gène (NCBI): 27250	Dilutions recommandées: WB 1:1000-1:4000 IP 0.5-4.0 ug for IP and 1:1000-1:6000 for WB IHC 1:20-1:200
Hôte: Lapin	Nom complet: programmed cell death 4 (neoplastic transformation inhibitor)	
Isotype: IgG	MW calculé: 469 aa, 52 kDa	
Immunogen Catalog Number: AG3288	MW observés: 54-64 kDa	

Applications

Applications testées:
FC, IHC, IP, WB, ELISA

Demandes citées:
IF, IHC, WB

Spécificité de l'espèce:
Humain, rat, souris

Espèces citées:
Humain, rat, souris

Remarque-IHC: il est suggéré de démasquer l'antigène avec un tampon de TE buffer pH 9,0; (*) A défaut, 'le démasquage de l'antigène peut être effectué avec un tampon citrate pH 6,0.

Contrôles positifs:

WB: cellules BxPC-3, cellules HEK293, cellules HEK-293, cellules HeLa, cellules MCF-7

IP: cellules HeLa,

IHC: tissu de cancer du sein humain,

Informations générales

Programmed cell death 4 (Pcd4) is a novel tumor suppressor that inhibits translation, progression and invasion. It was first identified as being differentially upregulated during apoptosis. Pcd4 interferes with the activity of the eukaryotic initiation factor (eIF) 4A by displacing the scaffold protein eIF4G from its binding to the RNA helicase eIF4A. The calculated molecular weight of unmodified PDCD4 protein is 52 kDa, but the modified protein is about 54-64 kDa.

Publications notables

Autrice	Pubmed ID	Journal	Application
Dong Fan	33101486	Oncol Lett	WB
Anya Alayev	25336146	J Cell Biochem	WB
Jianhua Xue	34786071	Am J Transl Res	WB

Stockage

Stockage:

Stocker à -20°C. Stable pendant un an après l'expédition.

Tampon de stockage:

PBS avec azoture de sodium à 0,02 % et glycérol à 50 % pH 7,3

L'aliquotage n'est pas nécessaire pour le stockage à -20C

*** Les 20ul contiennent 0,1% de BSA.

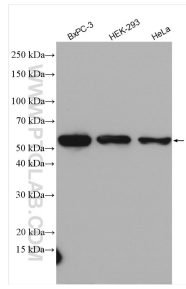
For technical support and original validation data for this product please contact:

T: 1 (888) 4PTGLAB (1-888-478-4522) (toll free in USA), or 1(312) 455-8498 (outside USA)

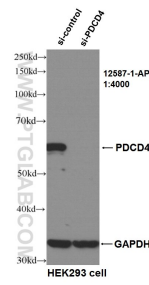
E: proteintech@ptglab.com
W: ptglab.com

This product is exclusively available under Proteintech Group brand and is not available to purchase from any other manufacturer.

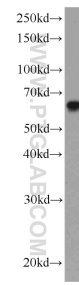
Données de validation sélectionnées



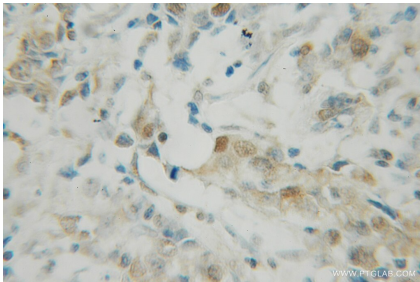
Various lysates were subjected to SDS PAGE followed by western blot with 12587-1-AP (PDCD4 antibody) at dilution of 1:2000 incubated at room temperature for 1.5 hours.



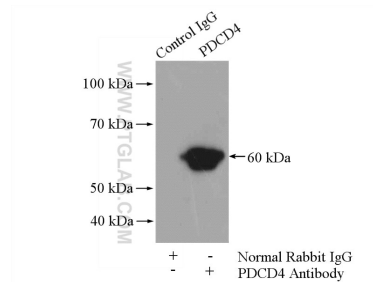
WB result of PDCD4 antibody (12587-1-AP, 1:4000) with si-control and si-PDCD4 transfected HEK293 cells.



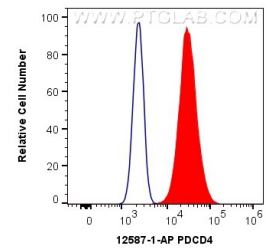
HeLa cells were subjected to SDS PAGE followed by western blot with 12587-1-AP (PDCD4 antibody) at dilution of 1:3000 incubated at room temperature for 1.5 hours.



Immunohistochemical analysis of paraffin-embedded human breast cancer using 12587-1-AP (PDCD4 antibody) at dilution of 1:50 (under 10x lens).



IP Result of anti-PDCD4 (IP:12587-1-AP, 4ug; Detection:12587-1-AP 1:3000) with HeLa cells lysate 4000ug.



1×10^6 MCF-7 cells were intracellularly stained with 0.4 ug Anti-Human PDCD4 (12587-1-AP) and CoraLite®488-Conjugated AffiniPure Goat Anti-Rabbit IgG(H+L) at dilution 1:1000 (red), or 0.4 ug Isotype Control. Cells were fixed with 4% PFA and permeabilized with Flow Cytometry Perm Buffer (PF00011-C).