

À des fins de recherche uniquement

Anticorps Polyclonal de lapin anti-CDO1



Numéro de catalogue: 12589-1-AP

15 Publications

Informations de base

Numéro de catalogue:
12589-1-AP

Taille:
150ul , Concentration: 600 µg/ml by Nanodrop and 267 µg/ml by Bradford method using BSA as the standard;

Hôte:
Lapin

Isotype:
IgG

Immunogen Catalog Number:
AG3294

Numéro d'acquisition GenBank:
BC024241

Identification du gène (NCBI):
1036

Nom complet:
cysteine dioxygenase, type I

MW calculé
200 aa, 23 kDa

MW observés:
23 kDa

Méthode de purification:
Purification par affinité contre l'antigène

Dilutions recommandées:
WB 1:1000-1:6000
IP 0.5-4.0 ug for IP and 1:500-1:1000 for WB
IHC 1:50-1:500

Applications

Applications testées:
IHC, IP, WB, ELISA

Demandes citées:
IHC, WB

Spécificité de l'espèce:
Humain, porc, rat, souris

Espèces citées:
Humain, rat, souris

Remarque-IHC: il est suggéré de démasquer l'antigène avec un tampon de TE buffer pH 9,0; (*) A défaut, 'le démasquage de l'antigène peut être effectué avec un tampon citrate pH 6,0.

Contrôles positifs:

WB : tissu hépatique de souris, tissu hépatique de rat

IP : tissu hépatique de souris,

IHC : tissu de cancer du foie humain, tissu de cancer du pancréas humain, tissu placentaire humain

Informations générales

CDO1 (cysteine dioxygenase type 1) is also named as CDO and belongs to the cysteine dioxygenase family. It is an enzyme that adds molecular oxygen to the sulfur of cysteine, converting the thiol to a sulfinic acid known as cysteinesulfinic acid (3-sulfinoalanine) and CDO1 is one of the most highly regulated metabolic enzymes responding to diet (PMID:19011731). The expression of CDO can significantly decrease the level of intracellular cysteine and this reduction is also associated with a decrease in total glutathione levels (PMID:17327371). Cysteine dioxygenase (CDO) plays a critical role in the regulation of cellular cysteine concentration and multiple forms of CDO (23 kDa, 25 kDa, and 68 kDa) have been claimed based upon separation and detection using SDS-PAGE/western blotting (PMID: 14752623).

Publications notables

Autrice	Pubmed ID	Journal	Application
Lin Shen	36150660	Biochim Biophys Acta Mol Basis Dis	WB
Ying-Ying Guo	36253617	Nat Metab	WB
Keita Kojima	29746493	PLoS One	IHC

Stockage

Stockage:

Stocker à -20°C. Stable pendant un an après l'expédition.

Tampon de stockage:

PBS avec azoture de sodium à 0,02 % et glycérol à 50 % pH 7,3

L'aliquotage n'est pas nécessaire pour le stockage à -20C

*** Les 20ul contiennent 0,1% de BSA.

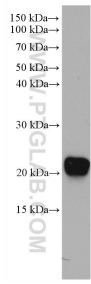
For technical support and original validation data for this product please contact:

T: 1 (888) 4PTGLAB (1-888-478-4522) (toll free in USA), or 1(312) 455-8498 (outside USA)

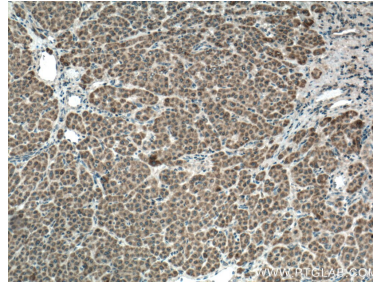
E: proteintech@ptglab.com
W: ptglab.com

This product is exclusively available under Proteintech Group brand and is not available to purchase from any other manufacturer.

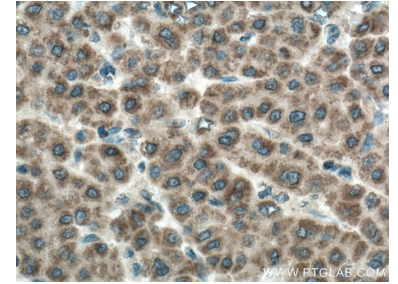
Données de validation sélectionnées



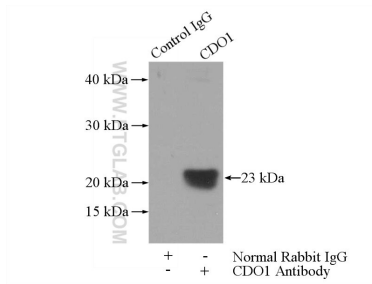
mouse liver tissue were subjected to SDS PAGE followed by western blot with 12589-1-AP (CDO1 antibody) at dilution of 1:3000 incubated at 4 degree celsius over night.



Immunohistochemical analysis of paraffin-embedded human liver cancer tissue slide using 12589-1-AP (CDO1 antibody) at dilution of 1:200 (under 10x lens. Heat mediated antigen retrieval with Tris-EDTA buffer (pH 9.0).



Immunohistochemical analysis of paraffin-embedded human liver cancer tissue slide using 12589-1-AP (CDO1 antibody) at dilution of 1:200 (under 40x lens. Heat mediated antigen retrieval with Tris-EDTA buffer (pH 9.0).



IP Result of anti-CDO1 (IP:12589-1-AP, 3ug; Detection:12589-1-AP 1:600) with mouse liver tissue lysate 4000ug.