

À des fins de recherche uniquement

# Anticorps Polyclonal de lapin anti-PANX1



Numéro de catalogue: 12595-1-AP

Phare

12 Publications

## Informations de base

Numéro de catalogue:  
12595-1-AP

Taille:  
150ul, Concentration: 700 µg/ml by  
Nanodrop;

Hôte:  
Lapin

Isotype:  
IgG

Immunogen Catalog Number:  
AG3174

Numéro d'acquisition GenBank:  
BC016931

Identification du gène (NCBI):  
24145

Nom complet:  
pannexin 1

MW calculé  
426 aa, 48 kDa

MW observés:  
45-50 kDa, 90 kDa

Méthode de purification:  
Purification par affinité contre  
l'antigène

Dilutions recommandées:  
WB 1:1000-1:6000

## Applications

Applications testées:  
WB, ELISA

Demandes citées:  
IF, IHC, WB

Spécificité de l'espèce:  
Humain, souris

Espèces citées:  
Humain, rat, souris

Contrôles positifs:

WB : cellules Jurkat, cellules C2C12, cellules K-562,  
cellules MDA-MB-231, cellules SH-SY5Y

## Informations générales

PANX1, also named as MRS1, belongs to the pannexin family. It plays a role as a Ca<sup>2+</sup>-leak channel to regulate ER Ca<sup>2+</sup> homeostasis. It is a structural component of the gap junctions and the hemichannels. PANX1 induced the formation of intercellular channels with characteristics of gap junctions. PANX1 is 48-kDa protein which contains 4 transmembrane domains and cytoplasmic N and C termini. It is a mediator of find-me signal/nucleotide release from apoptotic cells. Western blot for Panx1 was also seen in two bands at 45-50 kDa and ~90 kDa. The band of ~90 kDa corresponding to the Panx1 dimer size. (PMID: 24590064, PMID: 19009624)

## Publications notables

Autrice	Pubmed ID	Journal	Application
Mohsan Saeed	32997711	PLoS Pathog	WB
Chang Chen	34506603	PLoS One	WB,IF
Guanwen Huang	32416166	Life Sci	WB,IHC

## Stockage

Stockage:

Stocker à -20°C. Stable pendant un an après l'expédition.

Tampon de stockage:

PBS avec azoture de sodium à 0,02 % et glycérol à 50 % pH 7,3

L'aliquotage n'est pas nécessaire pour le stockage à -20C

\*\*\* Les 20ul contiennent 0,1% de BSA.

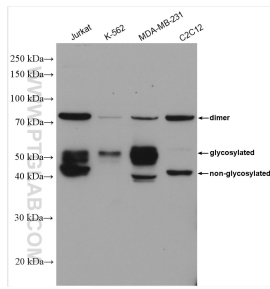
For technical support and original validation data for this product please contact:

T: 1 (888) 4PTGLAB (1-888-478-4522) (toll free  
in USA), or 1(312) 455-8498 (outside USA)

E: [proteintech@ptglab.com](mailto:proteintech@ptglab.com)  
W: [ptglab.com](http://ptglab.com)

This product is exclusively available under Proteintech Group brand and is not available to purchase from any other manufacturer.

## Données de validation sélectionnées



Various lysates were subjected to SDS PAGE followed by western blot with 12595-1-AP (PAX1 antibody) at dilution of 1:3000 incubated at room temperature for 1.5 hours.