

À des fins de recherche uniquement

# Anticorps Polyclonal de lapin anti-WT1



Numéro de catalogue: 12609-1-AP

Phare

26 Publications

## Informations de base

Numéro de catalogue:  
12609-1-AP

Taille:  
150ul, Concentration: 400 µg/ml by  
Nanodrop;

Hôte:  
Lapin

Isotype:  
IgG

Immunogen Catalog Number:  
AG3337

Numéro d'acquisition GenBank:  
BC032861

Identification du gène (NCBI):  
7490

Nom complet:  
Wilms tumor 1

MW calculé:  
449 aa, 49 kDa, 57 kDa

MW observés:  
52-55 kDa

Méthode de purification:  
Purification par affinité contre  
l'antigène

Dilutions recommandées:  
WB 1:500-1:3000  
IF 1:50-1:500

## Applications

Applications testées:  
FC, IF, WB, ELISA

Demandes citées:  
ChIP, IF, WB

Spécificité de l'espèce:  
Humain, rat, souris

Espèces citées:  
Chèvre, Humain, poulet, souris

Contrôles positifs:

WB : cellules K-562, cellules A431, cellules MCF-7,  
tissu hépatique humain, tissu rénal de rat, tissu rénal  
de souris

IF : cellules K-562,

## Informations générales

The WT1 gene encodes a zinc finger DNA-binding protein that acts as a transcriptional activator or repressor depending on the cellular or chromosomal context, and it is required for normal formation of the genitourinary system and mesothelial tissues. WT1 inhibits apoptosis through p53 and Bcl-2 and also inhibits the differentiation of leukemic cells. Function of WT1 may be isoform-specific: isoforms lacking the KTS motif may act as transcription factors. Isoforms containing the KTS motif may bind mRNA and play a role in mRNA metabolism or splicing. Isoform 1 has lower affinity for DNA, and can bind RNA. WT1 exists some isoforms with the range of molecular weight is 33-50 kDa.

## Publications notables

Autrice	Pubmed ID	Journal	Application
G Hua	26364602	Oncogene	WB, IHC
Zhengming Zhu	34490476	Mol Med Rep	WB
Xian Wang	36147345	Front Pharmacol	WB, IHC

## Stockage

Stockage:

Stocker à -20°C. Stable pendant un an après l'expédition.

Tampon de stockage:

PBS avec azoture de sodium à 0,02 % et glycérol à 50 % pH 7,3

L'aliquotage n'est pas nécessaire pour le stockage à -20C

\*\*\* Les 20ul contiennent 0,1% de BSA.

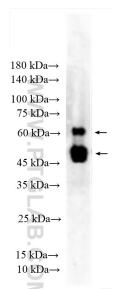
For technical support and original validation data for this product please contact:

T: 1 (888) 4PTGLAB (1-888-478-4522) (toll free  
in USA), or 1(312) 455-8498 (outside USA)

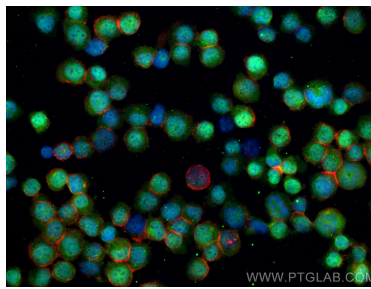
E: proteintech@ptglab.com  
W: ptglab.com

This product is exclusively available under Proteintech Group brand and is not available to purchase from any other manufacturer.

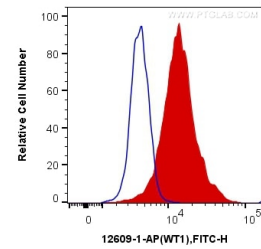
## Données de validation sélectionnées



K-562 cells were subjected to SDS PAGE followed by western blot with 12609-1-AP (WT1 antibody) at dilution of 1:1500 incubated at room temperature for 1.5 hours.



Immunofluorescent analysis of (4% PFA) fixed K-562 cells using WT1 antibody (12609-1-AP) at dilution of 1:200 and CoraLite®488-Conjugated AffiniPure Goat Anti-Rabbit IgG(H+L), CL594-Phalloidin (red).



$1 \times 10^6$  K-562 cells were intracellularly stained with 0.4  $\mu$ g Anti-Human WT1 (12609-1-AP) and CoraLite®488-Conjugated AffiniPure Goat Anti-Rabbit IgG(H+L) at dilution 1:1000 (red), or 0.4  $\mu$ g Control Antibody. Cells were fixed and permeabilized with Transcription Factor Staining Buffer Kit (PF00011).