

À des fins de recherche uniquement

# Anticorps Polyclonal de lapin anti-SCO1



Numéro de catalogue: 12614-1-AP

1 Publications

## Informations de base

<b>Numéro de catalogue:</b> 12614-1-AP	<b>Numéro d'acquisition GenBank:</b> BC015504	<b>Méthode de purification:</b> Purification par affinité contre l'antigène
<b>Taille:</b> 150ul, Concentration: 600 µg/ml by Nanodrop and 333 µg/ml by Bradford method using BSA as the standard;	<b>Identification du gène (NCBI):</b> 6341	<b>Dilutions recommandées:</b> WB 1:500-1:1000
<b>Hôte:</b> Lapin	<b>Nom complet:</b> SCO cytochrome oxidase deficient homolog 1 (yeast)	
<b>Isotype:</b> IgG	<b>MW calculé:</b> 301 aa, 34 kDa	
<b>Immunogen Catalog Number:</b> AG3269	<b>MW observés:</b> 30 kDa	

## Applications

<b>Applications testées:</b> WB, ELISA	<b>Contrôles positifs:</b> WB : cellules HeLa, cellules HepG2, cellules LNCaP, tissu cardiaque humain, tissu placentaire humain
<b>Demandes citées:</b> IF, IP, WB	
<b>Spécificité de l'espèce:</b> Humain	
<b>Espèces citées:</b> Humain, souris	

## Informations générales

Human SCO1 and SCO2 are metallochaperones that are essential for the assembly of the catalytic core of cytochrome c oxidase (COX). SCO1 appears to be involved in the folding and assembly of cytochrome oxidase subunit II, and possibly of other proteins of this subcompartment. It is a 33 kDa protein which displays limited homology to members of the DnaJ family (PMID:14731768). It is also named as SCOD1 and belongs to the SCO1/2 family. It can exist as a homodimer (PMID:16735468). Defects in SCO1 are a cause of mitochondrial complex IV deficiency (MT-C4D).

## Publications notables

Autrice	Pubmed ID	Journal	Application
Liping Xie	36261001	Cell Rep	WB, IF, IP

## Stockage

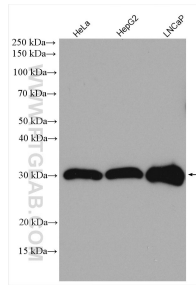
**Stockage:**  
Stocker à -20°C. Stable pendant un an après l'expédition.  
**Tampon de stockage:**  
PBS avec azoture de sodium à 0,02 % et glycérol à 50 % pH 7,3  
L'aliquotage n'est pas nécessaire pour le stockage à -20C

\*\*\* Les 20ul contiennent 0,1% de BSA.

For technical support and original validation data for this product please contact:  
T: 1 (888) 4PTGLAB (1-888-478-4522) (toll free in USA), or 1(312) 455-8498 (outside USA)  
E: proteintech@ptglab.com  
W: ptglab.com

This product is exclusively available under Proteintech Group brand and is not available to purchase from any other manufacturer.

## Données de validation sélectionnées



Various lysates were subjected to SDS PAGE followed by western blot with 12614-1-AP (SCO1 antibody) at dilution of 1:800 incubated at room temperature for 1.5 hours.