

À des fins de recherche uniquement

Anticorps Polyclonal de lapin anti-RBBP8



Numéro de catalogue: 12624-1-AP

Phare

2 Publications

Informations de base

Numéro de catalogue:
12624-1-AP

Taille:
150ul, Concentration: 260 µg/ml by Nanodrop and 240 µg/ml by Bradford method using BSA as the standard;

Hôte:
Lapin

Isotype:
IgG

Immunogen Catalog Number:
AG3314

Numéro d'acquisition GenBank:
BC030590

Identification du gène (NCBI):
5932

Nom complet:
retinoblastoma binding protein 8

MW calculé
103 kDa

MW observés:
120 kDa

Méthode de purification:
Purification par affinité contre l'antigène

Dilutions recommandées:
WB 1:500-1:1000

Applications

Applications testées:
WB, ELISA

Demandes citées:
WB

Spécificité de l'espèce:
Humain, souris

Espèces citées:
Humain

Contrôles positifs:

WB : cellules Raji, cellules A431

Informations générales

RBBP8 is an endonuclease that cooperates with the MRE11-RAD50-NBN (MRN) complex in processing meiotic and mitotic double-strand breaks (DSBs) by ensuring both resection and intrachromosomal association of the broken ends. It functions downstream of the MRN complex and ATM, promotes ATR activation and its recruitment to DSBs in the S/G2 phase facilitating the generation of ssDNA. It interacted with BRCA1 to form a complex that regulates CHEK1 activation and controls cell cycle G2/M checkpoints on DNA damage. Also it promotes microhomology-mediated alternative end joining (A-NHEJ) during class-switch recombination and plays an essential role in chromosomal translocations

Publications notables

Autrice	Pubmed ID	Journal	Application
Yang Yu	31636387	Oncogene	WB
Lei Yang	31418900	Cell Biochem Funct	WB

Stockage

Stockage:

Stocker à -20°C. Stable pendant un an après l'expédition.

Tampon de stockage:

PBS avec azoture de sodium à 0,02 % et glycérol à 50 % pH 7,3

L'aliquotage n'est pas nécessaire pour le stockage à -20C

*** Les 20ul contiennent 0,1% de BSA.

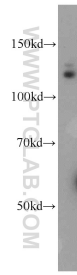
For technical support and original validation data for this product please contact:

T: 1 (888) 4PTGLAB (1-888-478-4522) (toll free in USA), or 1(312) 455-8498 (outside USA)

E: proteintech@ptglab.com
W: ptglab.com

This product is exclusively available under Proteintech Group brand and is not available to purchase from any other manufacturer.

Données de validation sélectionnées



Raji cells were subjected to SDS PAGE followed by western blot with 12624-1-AP (RBBP8 antibody) at dilution of 1:600 incubated at room temperature for 1.5 hours.