

À des fins de recherche uniquement

Anticorps Polyclonal de lapin anti-LAMP3



Numéro de catalogue: 12632-1-AP

18 Publications

Informations de base

Numéro de catalogue:
12632-1-AP

Taille:
150ul, Concentration: 400 µg/ml by
Nanodrop;

Hôte:
Lapin

Isotype:
IgG

Immunogen Catalog Number:
AG3325

Numéro d'acquisition GenBank:
BC032940

Identification du gène (NCBI):
27074

Nom complet:
lysosomal-associated membrane
protein 3

MW calculé
416 aa, 44 kDa

MW observés:
70 kDa

Méthode de purification:
Purification par affinité contre
l'antigène

Dilutions recommandées:
WB 1:1000-1:8000
IP 0.5-4.0 µg for IP and 1:500-1:1000
for WB
IHC 1:20-1:200

Applications

Applications testées:
IHC, IP, WB, ELISA

Demandes citées:
IF, IHC, WB

Spécificité de l'espèce:
Humain, rat, souris

Espèces citées:
Humain, singe, souris

Contrôles positifs:

WB : cellules A375, cellules A549, cellules HEK-293T,
cellules Raji, tissu de thymus de souris, tissu
pulmonaire de rat, tissu pulmonaire de souris

IP : cellules A549,

IHC : tissu pulmonaire humain, tissu placentaire
humain, tissu testiculaire humain

**Remarque-IHC: il est suggéré de démasquer
l'antigène avec un tampon de TE buffer pH
9.0; (*) À défaut, le démasquage de
l'antigène peut être effectué avec un
tampon citrate pH 6.0.**

Informations générales

LAMP3 (lysosome-associated membrane protein 3), also known as DC-LAMP (DC-lysosome-associated membrane glycoprotein), TSC403 or CD208, is a highly glycosylated lysosomal membrane protein that belongs to the LAMP family. The mature glycoprotein has an apparent molecular mass of 70-90 kDa, which is considerably larger than its predicted mass of 44 kDa (PMID: 9768752). LAMP3 is expressed in lung type II pneumocytes, lymphoid organs and dendritic cells. It might change the lysosome function after the transfer of peptide-MHC class II molecules to the surface of dendritic cells. LAMP3 mRNA is up-regulated in some human cancers (PMID:9721848). LAMP3 overexpression is associated with an enhanced metastatic potential and may be a prognostic factor for cervical cancer (PMID: 16204031).

Publications notables

Autrice	Pubmed ID	Journal	Application
Carlos López	32953267	PeerJ	IHC
Behzad Yeganeh	25361566	Am J Physiol Lung Cell Mol Physiol	IF
Zhichang Zhang	36305631	Clin Transl Med	IF

Stockage

Stockage:

Stocker à -20°C. Stable pendant un an après l'expédition.

Tampon de stockage:

PBS avec azoture de sodium à 0,02 % et glycérol à 50 % pH 7,3

L'aliquotage n'est pas nécessaire pour le stockage à -20C

*** Les 20ul contiennent 0,1% de BSA.

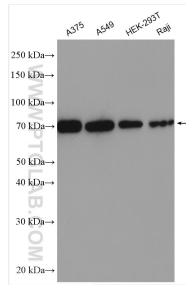
For technical support and original validation data for this product please contact:

T: 1 (888) 4PTGLAB (1-888-478-4522) (toll free
in USA), or 1(312) 455-8498 (outside USA)

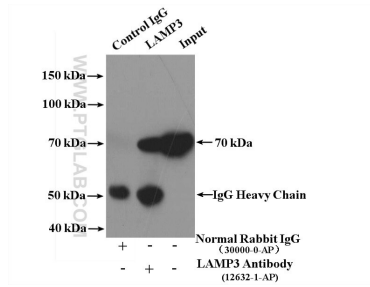
E: proteintech@ptglab.com
W: ptglab.com

This product is exclusively available under Proteintech Group brand and is not available to purchase from any other manufacturer.

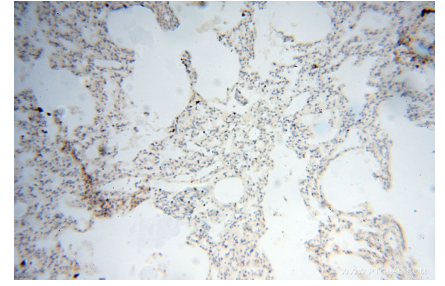
Données de validation sélectionnées



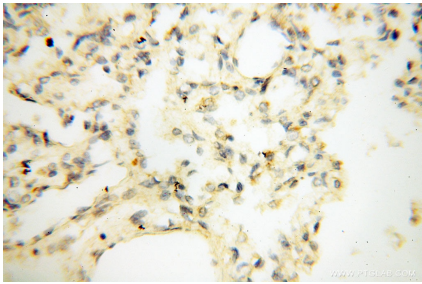
Various lysates were subjected to SDS PAGE followed by western blot with 12632-1-AP (LAMP3 antibody) at dilution of 1:4000 incubated at room temperature for 1.5 hours.



IP Result of anti-LAMP3 (IP:12632-1-AP, 4ug; Detection:12632-1-AP 1:500) with A549 cells lysate 2800ug.



Immunohistochemical analysis of paraffin-embedded human lung using 12632-1-AP (LAMP3 antibody) at dilution of 1:50 (under 10x lens).



Immunohistochemical analysis of paraffin-embedded human lung using 12632-1-AP (LAMP3 antibody) at dilution of 1:50 (under 40x lens).