

À des fins de recherche uniquement

Anticorps Polyclonal de lapin anti-golgin 97



Numéro de catalogue: 12640-1-AP

15 Publications

Informations de base

Numéro de catalogue:
12640-1-AP

Taille:
150ul, Concentration: 2000 µg/ml by
Nanodrop and 600 µg/ml by Bradford
method using BSA as the standard;

Hôte:
Lapin

Isotype:
IgG

Immunogen Catalog Number:
AG3335

Numéro d'acquisition GenBank:
BC032853

Identification du gène (NCBI):

Nom complet:
golgi autoantigen, golgin subfamily
a, 1

MW calculé
767 aa, 88 kDa

MW observés:
97 kDa

Méthode de purification:
Purification par affinité contre
l'antigène

Dilutions recommandées:
WB 1:2000-1:16000
IP 0.5-4.0 ug for IP and 1:200-1:1000
for WB
IF 1:300-1:1200

Applications

Applications testées:
FC, IF, IP, WB, ELISA

Demandes citées:
IF, IHC, IP, WB

Spécificité de l'espèce:
Humain, souris

Espèces citées:
Humain, singe, souris

Contrôles positifs:

WB : cellules HEK-293, cellules HeLa, cellules HepG2,
cellules SMMC-7721, tissu rénal de souris

IP : tissu rénal de souris,

IF : cellules HeLa,

Informations générales

Golgin subfamily A member 1 is a protein that in humans is encoded by the GOLGA1 gene. GOLGA1 has been shown to interact with ARL1. GOLGA1 is associated with Sjogren's syndrome. The MW of this protein is 97 kDa, and Catalog#12640-1-AP specially recognises the 97 kDa protein. IF result shows strong Golgi staining.

Publications notables

Autrice	Pubmed ID	Journal	Application
Mengyue You	36252341	Redox Biol	IF
Chengfeng Merriman	31591269	J Biol Chem	WB
Rachel E Turn	34818063	Mol Biol Cell	IHC

Stockage

Stockage:

Stocker à -20°C. Stable pendant un an après l'expédition.

Tampon de stockage:

PBS avec azoture de sodium à 0,02 % et glycérol à 50 % pH 7,3

L'aliquotage n'est pas nécessaire pour le stockage à -20C

*** Les 20ul contiennent 0,1% de BSA.

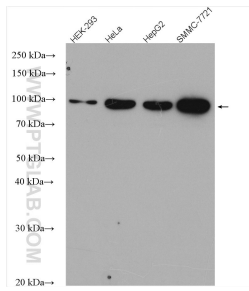
For technical support and original validation data for this product please contact:

T: 1 (888) 4PTGLAB (1-888-478-4522) (toll free
in USA), or 1(312) 455-8498 (outside USA)

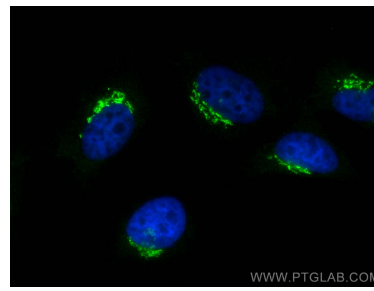
E: proteintech@ptglab.com
W: ptglab.com

This product is exclusively available under Proteintech Group brand and is not available to purchase from any other manufacturer.

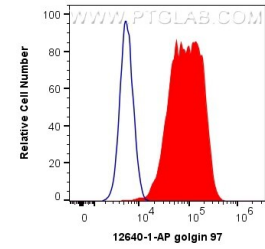
Données de validation sélectionnées



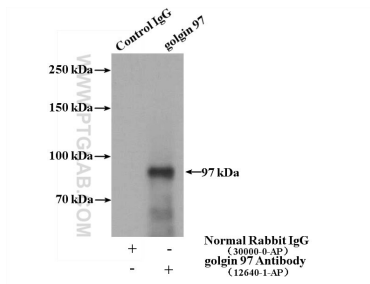
Various lysates were subjected to SDS PAGE followed by western blot with 12640-1-AP (golgin 97 antibody) at dilution of 1:8000 incubated at room temperature for 1.5 hours.



Immunofluorescent analysis of (4% PFA) fixed HeLa cells using golgin 97 antibody (12640-1-AP) at dilution of 1:600 and CoraLite®488-Conjugated AffiniPure Goat Anti-Rabbit IgG(H+L).



1X10⁶ HeLa cells were intracellularly stained with 0.4 ug Anti-Human golgin 97 (12640-1-AP) and CoraLite®488-Conjugated AffiniPure Goat Anti-Rabbit IgG(H+L) at dilution 1:1000 (red), or 0.4 ug Isotype Control. Cells were fixed with 4% PFA and permeabilized with Flow Cytometry Perm Buffer (PF00011-C).



IP Result of anti-golgin 97 (IP:12640-1-AP, 4ug; Detection:12640-1-AP 1:300) with mouse kidney tissue lysate 4000ug.