

À des fins de recherche uniquement

Anticorps Polyclonal de lapin anti-CaMKII Gamma



Numéro de catalogue: 12666-2-AP

Phare

17 Publications

Informations de base

Numéro de catalogue:

12666-2-AP

Taille:

150ul, Concentration: 450 µg/ml by Nanodrop;

Hôte:

Lapin

Isotype:

IgG

Immunogen Catalog Number:

AG3348

Numéro d'acquisition GenBank:

BC034044

Identification du gène (NCBI):

818

Nom complet:

calcium/calmodulin-dependent protein kinase II gamma

MW calculé

527 aa, 59 kDa

MW observés:

59 kDa

Méthode de purification:

Purification par affinité contre l'antigène

Dilutions recommandées:

WB 1:1000-1:4000

IP 0.5-4.0 µg for IP and 1:500-1:2000 for WB

IHC 1:20-1:200

IF 1:10-1:100

Applications

Applications testées:

IF, IHC, IP, WB, ELISA

Demandes citées:

IF, IHC, WB

Spécificité de l'espèce:

Humain, rat, souris

Espèces citées:

Humain, rat, souris

Contrôles positifs:

WB : cellules SMMC-7721, tissu cérébral humain

IP : tissu cardiaque de souris,

IHC : tissu de cancer du pancréas humain,

IF : cellules HepG2,

Remarque-IHC: il est suggéré de démasquer l'antigène avec un tampon de TE buffer pH 9,0; (*) À défaut, le démasquage de l'antigène peut être effectué avec un tampon citrate pH 6,0.

Informations générales

CaMKII gamma, also named as CAMKG or CAMK2G, belongs to the protein kinase superfamily, CAMK Ser/Thr protein kinase family and CaMK subfamily. CAMK2 is a prominent kinase in the central nervous system that may function in long-term potentiation and neurotransmitter release. CAMK2G has been shown to be expressed in human beta cells as a candidate gene for Type II (non-insulin-dependent) diabetes mellitus. Some study can be used to assess the role of CAMK2G in the susceptibility to Type II diabetes (PMID: 12032636). CAMK2G has some isoforms with the MW of 55-66 kDa and this antibody can recognize all the isoforms of CAMK2G. This antibody may have cross reaction with CAMK2A/B/D due to the high homology.

Publications notables

Autrice	Pubmed ID	Journal	Application
Chao Li	26317901	Oncotarget	WB
Jamee M Berg	26627310	Neuron	WB
Zhongyang Lv	34006826	Cell Death Dis	WB

Stockage

Stockage:

Stocker à -20°C. Stable pendant un an après l'expédition.

Tampon de stockage:

PBS avec azoture de sodium à 0,02 % et glycérol à 50 % pH 7,3

L'aliquotage n'est pas nécessaire pour le stockage à -20C

*** Les 20ul contiennent 0,1% de BSA.

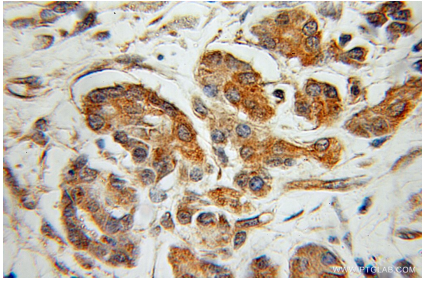
For technical support and original validation data for this product please contact:

T: 1 (888) 4PTGLAB (1-888-478-4522) (toll free in USA), or 1(312) 455-8498 (outside USA)

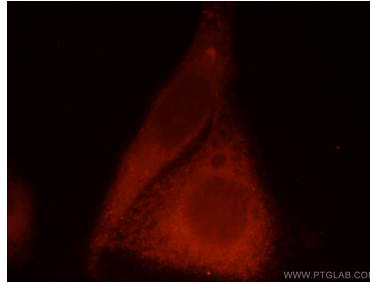
E: proteintech@ptglab.com
W: ptglab.com

This product is exclusively available under Proteintech Group brand and is not available to purchase from any other manufacturer.

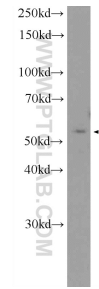
Données de validation sélectionnées



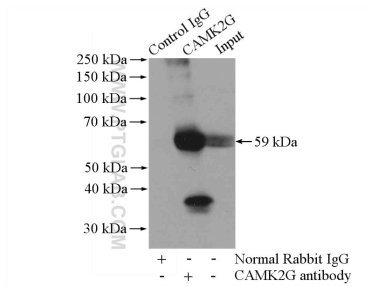
Immunohistochemical analysis of paraffin-embedded human pancreas cancer using 12666-2-AP (CaMKII gamma antibody) at dilution of 1:100 (under 10x lens).



Immunofluorescent analysis of HepG2 cells, using CAMK2G antibody 12666-2-AP at 1:25 dilution and Rhodamine-labeled goat anti-rabbit IgG (red).



SMMC-7721 cells were subjected to SDS PAGE followed by western blot with 12666-2-AP (CaMKII gamma antibody) at dilution of 1:2000 incubated at room temperature for 1.5 hours.



IP Result of anti-CaMKII gamma (IP:12666-2-AP, 4ug; Detection:12666-2-AP 1:1000) with mouse heart tissue lysate 3200ug.