

À des fins de recherche uniquement

Anticorps Polyclonal de lapin anti-CPEB3



Numéro de catalogue: 12669-1-AP

1 Publications

Informations de base

Numéro de catalogue: 12669-1-AP	Numéro d'acquisition GenBank: BC036444	Méthode de purification: Purification par affinité contre l'antigène
Taille: 150ul , Concentration: 300 µg/ml by Nanodrop and 267 µg/ml by Bradford method using BSA as the standard;	Identification du gène (NCBI): 22849	Dilutions recommandées: WB 1:500-1:1000 IHC 1:50-1:500 IF 1:50-1:500
Hôte: Lapin	Nom complet: cytoplasmic polyadenylation element binding protein 3	
Isotype: IgG	MW calculé: 697 aa, 76 kDa	
Immunogen Catalog Number: AG3351	MW observés: 76-80 kDa	

Applications

Applications testées:

IF, IHC, WB, ELISA

Demandes citées:

WB

Spécificité de l'espèce:

Humain, rat, souris

Espèces citées:

Humain

Remarque-IHC: il est suggéré de démasquer l'antigène avec un tampon de TE buffer pH 9,0; (*) A défaut, 'le démasquage de l'antigène peut être 'effectué avec un tampon citrate pH 6,0.

Contrôles positifs:

WB : tissu cérébral de souris, tissu cérébral de rat

IHC : tissu cérébral de souris,

IF : tissu cérébral de souris,

Informations générales

CPEB3, the cytoplasmic polyadenylation element-binding protein 3, contains a Q/N-rich domain at its N-termina which is required for the aggregation of CPEB3. The expression of CPEB3 is downregulated in cervical cancer and hepatocellular carcinoma compared with normal tissue. It has been reported that the aggregation and activity of CPEB3 is controlled by SUMOylation. CPEB3 is SUMOylated in hippocampal neurons in the basal state while converted into an active form which is associated with a decrease of SUMOylation and an increase of aggregation. CPEB3 is expressed in cytoplasm in unstimulated neurons but translocates to the nucleus following neuronal stimulation.

Publications notables

Autrice	Pubmed ID	Journal	Application
Ke Miao	32454494	Pharmacology	WB

Stockage

Stockage:

Stocker à -20°C. Stable pendant un an après l'expédition.

Tampon de stockage:

PBS avec azoture de sodium à 0,02 % et glycérol à 50 % pH 7,3

L'aliquotage n'est pas nécessaire pour le stockage à -20C

*** Les 20ul contiennent 0,1% de BSA.

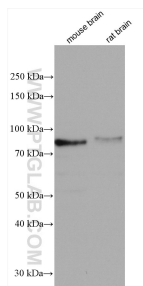
For technical support and original validation data for this product please contact:

T: 1 (888) 4PTGLAB (1-888-478-4522) (toll free in USA), or 1(312) 455-8498 (outside USA)

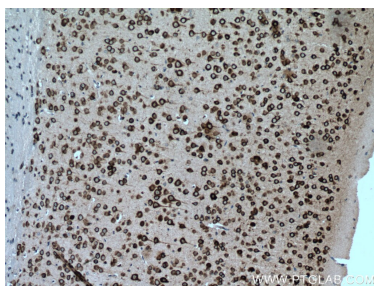
E: proteintech@ptglab.com
W: ptglab.com

This product is exclusively available under Proteintech Group brand and is not available to purchase from any other manufacturer.

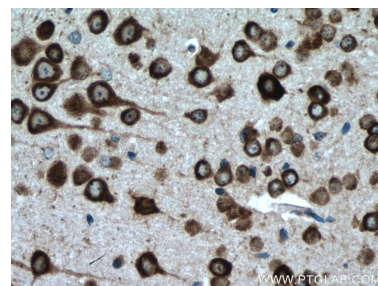
Données de validation sélectionnées



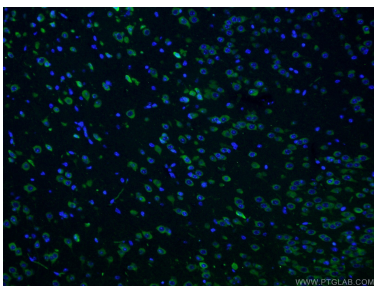
Various lysates were subjected to SDS PAGE followed by western blot with 12669-1-AP (CPEB3 antibody) at dilution of 1:600 incubated at room temperature for 1.5 hours.



Immunohistochemical analysis of paraffin-embedded mouse brain tissue slide using 12669-1-AP (CPEB3 antibody) at dilution of 1:200 (under 10x lens). Heat mediated antigen retrieval with Tris-EDTA buffer (pH 9.0).



Immunohistochemical analysis of paraffin-embedded mouse brain tissue slide using 12669-1-AP (CPEB3 antibody) at dilution of 1:200 (under 40x lens). Heat mediated antigen retrieval with Tris-EDTA buffer (pH 9.0).



Immunofluorescent analysis of (4% PFA) fixed mouse brain tissue using 12669-1-AP (CPEB3 antibody) at dilution of 1:50 and Coralite488-Conjugated AffiniPure Goat Anti-Rabbit IgG(H+L).