

À des fins de recherche uniquement

Anticorps Polyclonal de lapin anti-SHCBP1



Numéro de catalogue: 12672-1-AP

Phare

11 Publications

Informations de base

Numéro de catalogue:
12672-1-AP

Taille:
150ul, Concentration: 450 µg/ml by Nanodrop and 373 µg/ml by Bradford method using BSA as the standard;

Hôte:
Lapin

Isotype:
IgG

Immunogen Catalog Number:
AG3355

Numéro d'acquisition GenBank:
BC030699

Identification du gène (NCBI):
79801

Nom complet:
SHC SH2-domain binding protein 1

MW calculé
672 aa, 76 kDa

MW observés:
75-85 kDa

Méthode de purification:
Purification par affinité contre l'antigène

Dilutions recommandées:
WB 1:2000-1:10000
IP 0.5-4.0 ug for IP and 1:500-1:1000 for WB
IHC 1:50-1:500

Applications

Applications testées:
IHC, IP, WB, ELISA

Demandes citées:
IF, IHC, IP, WB

Spécificité de l'espèce:
Humain, souris

Espèces citées:
canin, Humain, souris

Remarque-IHC: il est suggéré de démasquer l'antigène avec un tampon de TE buffer pH 9,0; (*) A défaut, 'le démasquage de l'antigène peut être 'effectué avec un tampon citrate pH 6,0.

Contrôles positifs:

WB : cellules HeLa, cellules HepG2, cellules Jurkat, cellules Neuro-2a, cellules Sp2/O, tissu de thymus de souris

IP : cellules Jurkat,

IHC : tissu de cancer du foie humain, tissu d'amygdalite humain, tissu testiculaire humain

Informations générales

SHCBP1 was initially identified as a potential gene associated with cell proliferation in fibroblasts. SHCBP1 exerts a crucial physiological function in normal tissue development. Chen et al. showed that SHCBP1 is an essential component of FGF signaling in neural progenitor cells. SHCBP1 is also upregulated during T cell proliferation and regulates CD4+ T cell effector function in vivo. Recently, SHCBP1 was shown to be closely associated with cancer development.

Publications notables

Autrice	Pubmed ID	Journal	Application
Hongzhao Lu	33064958	Cancer Biol Ther	WB
Changliang Peng	29020987	J Exp Clin Cancer Res	IF, IHC, WB
Miao Mo	33163262	Am J Cancer Res	WB, IHC

Stockage

Stockage:

Stocker à -20°C. Stable pendant un an après l'expédition.

Tampon de stockage:

PBS avec azoture de sodium à 0,02 % et glycérol à 50 % pH 7,3

L'aliquotage n'est pas nécessaire pour le stockage à -20C

*** Les 20ul contiennent 0,1% de BSA.

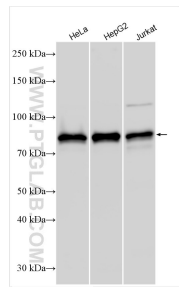
For technical support and original validation data for this product please contact:

T: 1 (888) 4PTGLAB (1-888-478-4522) (toll free in USA), or 1(312) 455-8498 (outside USA)

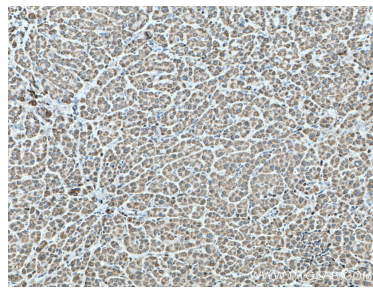
E: proteintech@ptglab.com
W: ptglab.com

This product is exclusively available under Proteintech Group brand and is not available to purchase from any other manufacturer.

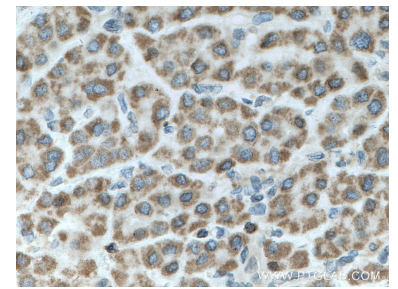
Données de validation sélectionnées



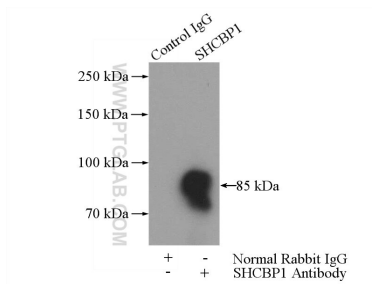
Various lysates were subjected to SDS PAGE followed by western blot with 12672-1-AP (SHCBP1 antibody) at dilution of 1:5000 incubated at room temperature for 1.5 hours.



Immunohistochemical analysis of paraffin-embedded human liver cancer tissue slide using 12672-1-AP (SHCBP1 antibody) at dilution of 1:200 (under 10x lens. Heat mediated antigen retrieval with Tris-EDTA buffer (pH 9.0).



Immunohistochemical analysis of paraffin-embedded human liver cancer tissue slide using 12672-1-AP (SHCBP1 antibody) at dilution of 1:200 (under 40x lens. Heat mediated antigen retrieval with Tris-EDTA buffer (pH 9.0).



IP Result of anti-SHCBP1 (IP:12672-1-AP, 4ug; Detection:12672-1-AP 1:500) with Jurkat cells lysate 2400ug.