

À des fins de recherche uniquement

# Anticorps Polyclonal de lapin anti-PPP2R5A



Numéro de catalogue: 12675-2-AP

Phare

3 Publications

## Informations de base

Numéro de catalogue:

12675-2-AP

Taille:

150ul, Concentration: 450 µg/ml by Nanodrop;

Hôte:

Lapin

Isotype:

IgG

Immunogen Catalog Number:

AG3360

Numéro d'acquisition GenBank:

BC022474

Identification du gène (NCBI):

5525

Nom complet:

protein phosphatase 2, regulatory subunit B', alpha isoform

MW calculé

486 aa, 56 kDa

MW observés:

56 kDa

Méthode de purification:

Purification par affinité contre l'antigène

Dilutions recommandées:

WB 1:300-1:1000

IP 0.5-4.0 ug for IP and 1:500-1:1000 for WB

IHC 1:50-1:500

IF 1:50-1:500

## Applications

Applications testées:

IF, IHC, IP, WB, ELISA

Demandes citées:

IHC, WB

Spécificité de l'espèce:

Humain, rat, souris

Espèces citées:

Humain

**Remarque-IHC: il est suggéré de démasquer l'antigène avec un tampon de TE buffer pH 9,0; (\*) À défaut, le démasquage de l'antigène peut être effectué avec un tampon citrate pH 6,0.**

Contrôles positifs:

WB : tissu d'iléon humain, cellules HeLa, tissu cardiaque de rat, tissu cardiaque de souris, tissu cardiaque humain, tissu cérébral humain, tissu pulmonaire humain, tissu rénal humain

IP : tissu cérébral de souris,

IHC : tissu de cancer du pancréas humain,

IF : cellules HepG2,

## Informations générales

PPP2R5A (protein phosphatase 2, regulatory subunit B (B56), alpha isoform) is also named as PR61alpha and belongs to the phosphatase 2A regulatory subunit B56 family. B56 alpha subunit gene encodes a cytoplasmic phosphoprotein (PMID:7592815). The B regulatory subunit might modulate substrate selectivity and catalytic activity, and also might direct the localization of the catalytic enzyme to a particular subcellular compartment. This protein has 2 isoforms produced by alternative splicing with the molecular weight of 54 kDa and 50 kDa.

## Publications notables

Autrice	Pubmed ID	Journal	Application
Xiaoman Zhu	36096985	Cell Death Dis	WB
Siwen Yin	35154432	Oncol Lett	WB
Zehang Zhuang	28849187	Oncol Rep	WB, IHC

## Stockage

Stockage:

Stocker à -20°C. Stable pendant un an après l'expédition.

Tampon de stockage:

PBS avec azotate de sodium à 0,02 % et glycérol à 50 % pH 7,3

L'aliquotage n'est pas nécessaire pour le stockage à -20C

**\*\*\* Les 20ul contiennent 0,1% de BSA.**

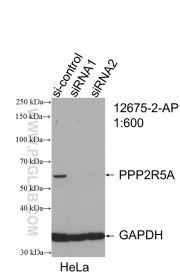
For technical support and original validation data for this product please contact:

T: 1 (888) 4PTGLAB (1-888-478-4522) (toll free in USA), or 1(312) 455-8498 (outside USA)

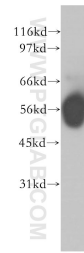
E: proteintech@ptglab.com  
W: ptglab.com

**This product is exclusively available under Proteintech Group brand and is not available to purchase from any other manufacturer.**

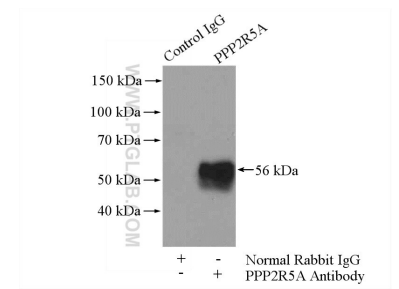
## Données de validation sélectionnées



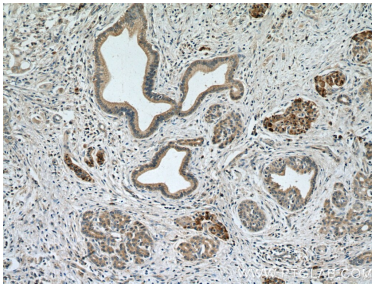
WB result of PPP2R5A antibody (12675-2-AP; 1:600; incubated at room temperature for 1.5 hours) with sh-Control and sh-PPP2R5A transfected HeLa cells.



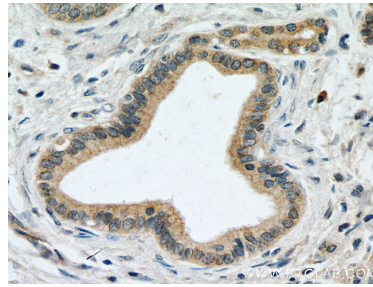
human ileum tissue were subjected to SDS PAGE followed by western blot with 12675-2-AP (PPP2R5A antibody) at dilution of 1:400 incubated at room temperature for 1.5 hours.



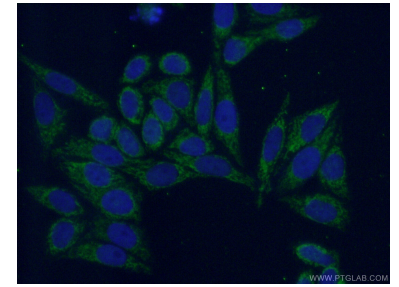
IP Result of anti-PPP2R5A (IP:12675-2-AP, 4ug; Detection:12675-2-AP 1:500) with mouse brain tissue lysate 4000ug.



Immunohistochemical analysis of paraffin-embedded human pancreas cancer tissue slide using 12675-2-AP (PPP2R5A antibody) at dilution of 1:200 (under 10x lens. Heat mediated antigen retrieval with Tris-EDTA buffer (pH 9.0).



Immunohistochemical analysis of paraffin-embedded human pancreas cancer tissue slide using 12675-2-AP (PPP2R5A antibody) at dilution of 1:200 (under 40x lens. Heat mediated antigen retrieval with Tris-EDTA buffer (pH 9.0).



Immunofluorescent analysis of (4% PFA) fixed HepG2 cells using 12675-2-AP (PPP2R5A antibody) at dilution of 1:50 and Alexa Fluor 488-conjugated AffiniPure Goat Anti-Rabbit IgG(H+L).