

À des fins de recherche uniquement

Anticorps Polyclonal de lapin anti-GLIS3



Numéro de catalogue: 12678-1-AP

Informations de base

Numéro de catalogue: 12678-1-AP	Numéro d'acquisition GenBank: BC033899	Méthode de purification: Purification par affinité contre l'antigène
Taille: 150ul, Concentration: 400 µg/ml by Nanodrop and 287 µg/ml by Bradford method using BSA as the standard;	Identification du gène (NCBI): 169792	Dilutions recommandées: WB 1:200-1:1000
Hôte: Lapin	Nom complet: GLIS family zinc finger 3	
Isotype: IgG	MW calculé: 775 aa, 84 kDa	
Immunogen Catalog Number: AG3366	MW observés: 70-85 kDa	

Applications

Applications testées: WB, ELISA	Contrôles positifs: WB : tissu rénal de souris, cellules A549, cellules BxPC-3, cellules HepG2
Spécificité de l'espèce: Humain, rat, souris	

Informations générales

Zinc-finger proteins contain DNA-binding domains and have a wide variety of functions, most of which encompass some form of transcriptional activation or repression. GLIS3 (gLIIS family zinc finger 3), also known as ZNF515 that localizes to the nucleus and contains five C2H2-type zinc fingers. Expressed in a variety of tissues, including kidney, brain, liver, lung, ovary, pancreas, thymus and skeletal muscle, GLIS3 functions as both an activator and a suppressor of transcription, specifically binding the consensus sequence 5'-GACCACCAC-3' through its C2H2-type zinc fingers. Defects in the gene encoding GLIS3 are a cause of NDH syndrome; a neonatal diabetes that is characterized by congenital hypothyroidism, congenital glaucoma, hepatic fibrosis and polycystic kidneys. There are various isoform of GLIS3 and molecular weight of one isoform is 70 kDa.

Stockage

Stockage:
Stocker à -20°C. Stable pendant un an après l'expédition.
Tampon de stockage:
PBS avec azoture de sodium à 0,02 % et glycérol à 50 % pH 7,3
L'aliquotage n'est pas nécessaire pour le stockage à -20C

*** Les 20ul contiennent 0,1% de BSA.

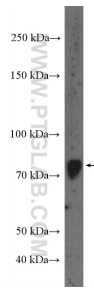
For technical support and original validation data for this product please contact:

T: 1 (888) 4PTGLAB (1-888-478-4522) (toll free in USA), or 1(312) 455-8498 (outside USA)

E: proteintech@ptglab.com
W: ptglab.com

This product is exclusively available under Proteintech Group brand and is not available to purchase from any other manufacturer.

Données de validation sélectionnées



mouse kidney tissue were subjected to SDS PAGE followed by western blot with 12678-1-AP (GLIS3 Antibody) at dilution of 1:300 incubated at room temperature for 1.5 hours.