

À des fins de recherche uniquement

Anticorps Polyclonal de lapin anti-gephyrin



Numéro de catalogue: 12681-1-AP

5 Publications

Informations de base

Numéro de catalogue:
12681-1-AP

Taille:
150ul, Concentration: 800 µg/ml by Nanodrop and 273 µg/ml by Bradford method using BSA as the standard;

Hôte:
Lapin

Isotype:
IgG

Immunogen Catalog Number:
AG3370

Numéro d'acquisition GenBank:
BC030016

Identification du gène (NCBI):
10243

Nom complet:
gephyrin

MW calculé:
769 aa, 83 kDa

MW observés:
93 kDa

Méthode de purification:
Purification par affinité contre l'antigène

Dilutions recommandées:
WB 1:500-1:1000
IP 0.5-4.0 ug for IP and 1:500-1:1000 for WB
IHC 1:50-1:500
IF 1:20-1:200

Applications

Applications testées:
IF, IHC, IP, WB, ELISA

Demandes citées:
IF, WB

Spécificité de l'espèce:
Humain, rat, souris

Espèces citées:
souris

Remarque-IHC: il est suggéré de démasquer l'antigène avec un tampon de TE buffer pH 9,0; (*) A défaut, 'le démasquage de l'antigène peut être 'effectué avec un tampon citrate pH 6,0.

Contrôles positifs:

WB : cellules HEK-293, cellules Jurkat

IP : cellules HEK-293,

IHC : tissu cérébral de rat,

IF : cellules HEK-293,

Informations générales

Gephyrin (GPHN) is an organizational protein that clusters and localizes the inhibitory glycine receptor (GlyR) and GABAA receptors to the microtubular matrix of the neuronal postsynaptic membrane. Mice deficient in gephyrin develop a hereditary molybdenum cofactor deficiency and a neurological phenotype that mimics startle disease (hyperekplexia). In non-neuronal tissues, the encoded protein is also required for molybdenum cofactor biosynthesis. Two isoforms produced by alternative splicing have been described. The observed MW of Gephyrin is 93 kDa, larger than the predicted of 83 kDa, which may be due to the modifications on various phosphorylation sites.

Publications notables

Autrice	Pubmed ID	Journal	Application
Jian Meng	35606143	J Neurosci	WB
Xiaoxiang Tan	36608926	Neurosci Lett	WB
Zsuzsanna H McMahan	37530745	Arthritis Rheumatol	IF

Stockage

Stockage:

Stocker à -20°C. Stable pendant un an après l'expédition.

Tampon de stockage:

PBS avec azoture de sodium à 0,02 % et glycérol à 50 % pH 7,3

L'aliquoteage n'est pas nécessaire pour le stockage à -20C

*** Les 20ul contiennent 0,1% de BSA.

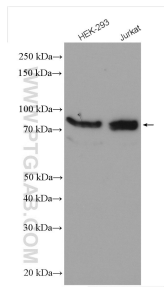
For technical support and original validation data for this product please contact:

T: 1 (888) 4PTGLAB (1-888-478-4522) (toll free in USA), or 1(312) 455-8498 (outside USA)

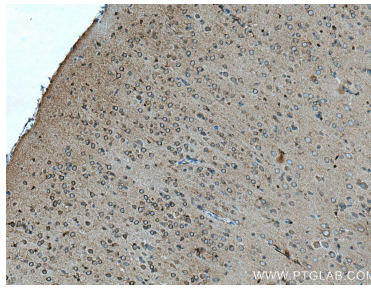
E: proteintech@ptglab.com
W: ptglab.com

This product is exclusively available under Proteintech Group brand and is not available to purchase from any other manufacturer.

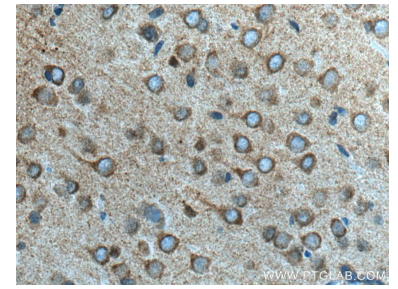
Données de validation sélectionnées



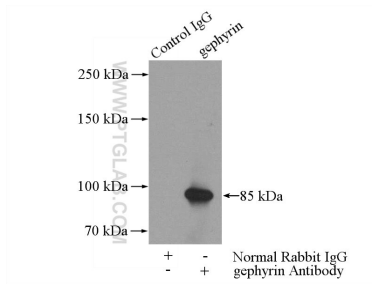
Various lysates were subjected to SDS PAGE followed by western blot with 12681-1-AP (gephyrin antibody) at dilution of 1:600 incubated at room temperature for 1.5 hours.



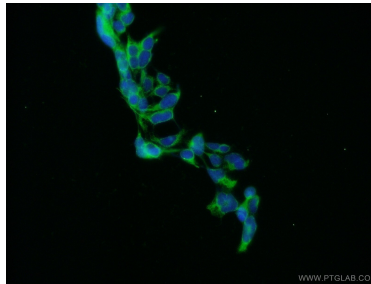
Immunohistochemical analysis of paraffin-embedded rat brain tissue slide using 12681-1-AP (gephyrin antibody) at dilution of 1:200 (under 10x lens). Heat mediated antigen retrieval with Tris-EDTA buffer (pH 9.0).



Immunohistochemical analysis of paraffin-embedded rat brain tissue slide using 12681-1-AP (gephyrin antibody) at dilution of 1:200 (under 40x lens). Heat mediated antigen retrieval with Tris-EDTA buffer (pH 9.0).



IP Result of anti-gephyrin (IP:12681-1-AP, 4ug; Detection:12681-1-AP 1:700) with HEK-293 cells lysate 3200ug.



Immunofluorescent analysis of HEK-293 cells using 12681-1-AP (gephyrin antibody) at dilution of 1:50 and Alexa Fluor 488-conjugated AffiniPure Goat Anti-Rabbit IgG(H+L).