

À des fins de recherche uniquement

# Anticorps Polyclonal de lapin anti-KIFAP3



Numéro de catalogue: 12700-1-AP

2 Publications

## Informations de base

Numéro de catalogue:  
12700-1-AP

Taille:  
150ul, Concentration: 600 µg/ml by  
Nanodrop and 347 µg/ml by Bradford  
method using BSA as the standard;

Hôte:  
Lapin

Isotype:  
IgG

Immunogen Catalog Number:  
AG3394

Numéro d'acquisition GenBank:  
BC028679

Identification du gène (NCBI):  
22920

Nom complet:  
kinesin-associated protein 3

MW calculé  
792 aa, 91 kDa

MW observés:  
91 kDa

Méthode de purification:  
Purification par affinité contre  
l'antigène

Dilutions recommandées:  
WB 1:500-1:3000  
IP 0.5-4.0 ug for IP and 1:500-1:1000  
for WB  
IF 1:50-1:500

## Applications

Applications testées:  
IF, IP, WB, ELISA

Demandes citées:  
WB

Spécificité de l'espèce:  
Humain, rat, souris

Espèces citées:  
Humain

Contrôles positifs:

WB : tissu cérébral humain, cellules MCF-7, tissu  
cérébral de souris, tissu testiculaire de souris

IP : tissu testiculaire de souris,

IF : cellules HepG2,

## Informations générales

KIFAP3, also known as KIF3AP or KAP3, is a novel KIF3A/3B-associated protein. It binds to the tail domain of KIF3A/3B and may play a role in regulating the binding of KIF3A/3B to cargoes. Recently it has been reported that mutation within the KIFAP3 gene is associated with decreased KIFAP3 expression and increased survival in sporadic ALS, which makes it a potential target for ALS therapy. KIFAP3 has also been identified as the target of mir-130a.

## Publications notables

Autrice	Pubmed ID	Journal	Application
Christopher Noyes	36653474	Commun Biol	WB
G?ken Joop J	22323518	Nucleic Acids Res	WB

## Stockage

Stockage:

Stocker à -20°C. Stable pendant un an après l'expédition.

Tampon de stockage:

PBS avec azoture de sodium à 0,02 % et glycérol à 50 % pH 7,3

L'aliquotage n'est pas nécessaire pour le stockage à -20C

\*\*\* Les 20ul contiennent 0,1% de BSA.

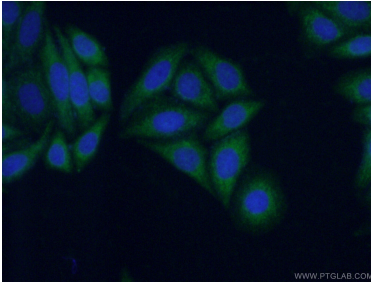
For technical support and original validation data for this product please contact:

T: 1 (888) 4PTGLAB (1-888-478-4522) (toll free  
in USA), or 1(312) 455-8498 (outside USA)

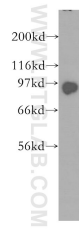
E: proteintech@ptglab.com  
W: ptglab.com

This product is exclusively available under Proteintech Group brand and is not available to purchase from any other manufacturer.

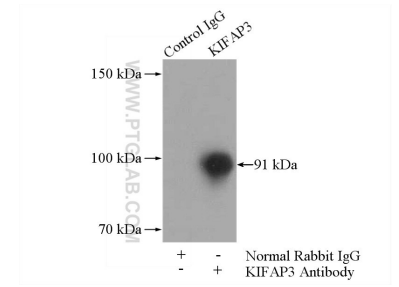
## Données de validation sélectionnées



Immunofluorescent analysis of (-20°C Ethanol) fixed HepG2 cells using 12700-1-AP (KIFAP3 antibody) at dilution of 1:50 and Alexa Fluor 488-conjugated AffiniPure Goat Anti-Rabbit IgG(H+L).



human brain tissue were subjected to SDS PAGE followed by western blot with 12700-1-AP (KIFAP3 antibody) at dilution of 1:600 incubated at room temperature for 1.5 hours.



IP Result of anti-KIFAP3 (IP:12700-1-AP, 4ug; Detection:12700-1-AP 1:500) with mouse testis tissue lysate 4000ug.