

À des fins de recherche uniquement

# Anticorps Polyclonal de lapin anti-SNAP29



Numéro de catalogue: 12704-1-AP

Phare

23 Publications

## Informations de base

Numéro de catalogue:  
12704-1-AP

Taille:  
150ul, Concentration: 700 µg/ml by Nanodrop and 233 µg/ml by Bradford method using BSA as the standard;

Hôte:  
Lapin

Isotype:  
IgG

Immunogen Catalog Number:  
AG3382

Numéro d'acquisition GenBank:  
BC009715

Identification du gène (NCBI):  
9342

Nom complet:  
synaptosomal-associated protein,  
29kDa

MW calculé  
258 aa, 29 kDa

MW observés:  
29 kDa

Méthode de purification:  
Purification par affinité contre  
l'antigène

Dilutions recommandées:  
WB 1:500-1:2000  
IP 0.5-4.0 ug for IP and 1:500-1:1000  
for WB  
IHC 1:50-1:500  
IF 1:50-1:500

## Applications

Applications testées:  
IF, IHC, IP, WB, ELISA

Demandes citées:  
CoIP, IF, IHC, IP, WB

Spécificité de l'espèce:  
Humain, rat, souris

Espèces citées:  
Humain, rat, souris

**Remarque-IHC: il est suggéré de démasquer l'antigène avec un tampon de TE buffer pH 9,0; (\*) A défaut, 'le démasquage de l'antigène peut être 'effectué avec un tampon citrate pH 6,0.**

Contrôles positifs:

WB : tissu rénal humain, cellules HEK-293, cellules Jurkat, cellules K-562, tissu hépatique humain

IP : cellules Jurkat,

IHC : tissu rénal de souris, tissu d'estomac humain, tissu rénal humain

IF : cellules HEK-293,

## Informations générales

SNAREs, soluble N-ethylmaleimide-sensitive factor-attachment protein receptors, are essential proteins for the fusion of cellular membranes. SNAREs localized on opposing membranes assemble to form a trans-SNARE complex, an extended, parallel four alpha-helical bundle that drives membrane fusion. SNAP29 is a SNARE involved in autophagy through the direct control of autophagosome membrane fusion with the lysosome membrane. SNAP29 plays also a role in ciliogenesis by regulating membrane fusions.

## Publications notables

Autrice	Pubmed ID	Journal	Application
Zheng Li	31775910	Stem Cell Res Ther	WB
Hao-Long Zeng	29174846	Biochim Biophys Acta	WB
Yonglu Che	31712554	Nat Commun	WB,IF

## Stockage

Stockage:

Stocker à -20°C. Stable pendant un an après l'expédition.

Tampon de stockage:

PBS avec azoture de sodium à 0,02 % et glycérol à 50 % pH 7,3

L'aliquotage n'est pas nécessaire pour le stockage à -20C

\*\*\* Les 20ul contiennent 0,1% de BSA.

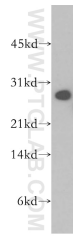
For technical support and original validation data for this product please contact:

T: 1 (888) 4PTGLAB (1-888-478-4522) (toll free in USA), or 1(312) 455-8498 (outside USA)

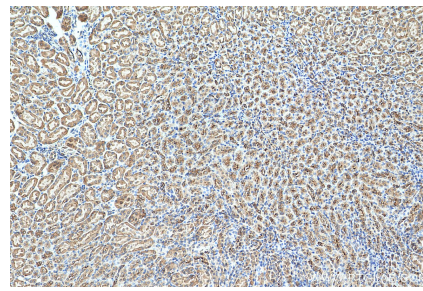
E: proteintech@ptglab.com  
W: ptglab.com

This product is exclusively available under Proteintech Group brand and is not available to purchase from any other manufacturer.

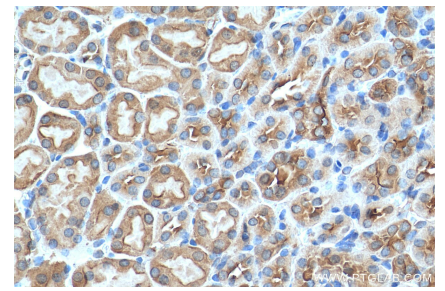
## Données de validation sélectionnées



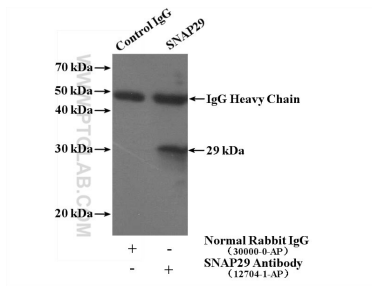
human kidney tissue were subjected to SDS PAGE followed by western blot with 12704-1-AP (SNAP29 antibody) at dilution of 1:500 incubated at room temperature for 1.5 hours.



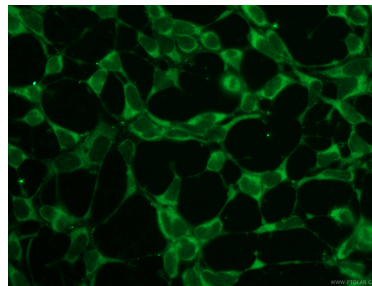
Immunohistochemical analysis of paraffin-embedded mouse kidney tissue slide using 12704-1-AP (SNAP29 antibody) at dilution of 1:200 (under 10x lens). Heat mediated antigen retrieval with Tris-EDTA buffer (pH 9.0).



Immunohistochemical analysis of paraffin-embedded mouse kidney tissue slide using 12704-1-AP (SNAP29 antibody) at dilution of 1:200 (under 40x lens). Heat mediated antigen retrieval with Tris-EDTA buffer (pH 9.0).



IP Result of anti-SNAP29 (IP:12704-1-AP, 4ug; Detection:12704-1-AP 1:600) with Jurkat cells lysate 3200ug.



Immunofluorescent analysis of (-20°C Ethanol) fixed HEK-293 cells using 12704-1-AP (SNAP29 antibody), at dilution of 1:200 and CoraLite@488-Conjugated AffiniPure Goat Anti-Rabbit IgG(H+L).