

À des fins de recherche uniquement

Anticorps Polyclonal de lapin anti-GCNF



Numéro de catalogue: 12712-1-AP

Phare

3 Publications

Informations de base

Numéro de catalogue:
12712-1-AP

Taille:
150ul, Concentration: 147 µg/ml by Nanodrop and 147 µg/ml by Bradford method using BSA as the standard;

Hôte:
Lapin

Isotype:
IgG

Immunogen Catalog Number:
AG3395

Numéro d'acquisition GenBank:
BC030600

Identification du gène (NCBI):
2649
Nom complet:
nuclear receptor subfamily 6, group A, member 1

MW calculé
475 aa, 54 kDa

MW observés:
54 kDa

Méthode de purification:
Purification par affinité contre l'antigène

Dilutions recommandées:
WB 1:500-1:2000
IP 0.5-4.0 ug for IP and 1:500-1:1000 for WB
IHC 1:20-1:200

Applications

Applications testées:
IHC, IP, WB, ELISA

Demandes citées:
IF, IHC, WB

Spécificité de l'espèce:
Humain, rat, souris

Espèces citées:
Humain, souris

Remarque-IHC: il est suggéré de démasquer l'antigène avec un tampon de TE buffer pH 9.0; (*) A défaut, le démasquage de l'antigène peut être effectué avec un tampon citrate pH 6,0.

Contrôles positifs:

WB : cellules PC-3, cellules K-562, tissu testiculaire de souris

IP : tissu testiculaire de souris,

IHC : tissu testiculaire humain,

Informations générales

NR6A1 (Nuclear Receptor Subfamily 6 Group A member), also known as GCNF (Germ Cell Nuclear Factor), is an orphan member of the nuclear receptor gene superfamily. It has been shown to be expressed in the nervous system during development and during specific stages in maturing germ cells of the ovary and testis in the adult, and has probable roles in gametogenesis, neurogenesis, and normal embryonic development during gastrulation. Inactivation of GCNF in mouse results in abnormal posterior development, impaired midbrain development, insufficient closure of the neural tube, and eventual embryonic death. GCNF has been shown to be a repressor of OCT-4 and plays a critical role in the control of gene expression during embryogenesis and spermatogenesis. This antibody specifically reacts with the 55kd NR6A1 protein.

Publications notables

Autrice	Pubmed ID	Journal	Application
Zhong-Hua Lin	36304495	J Clin Transl Hepatol	WB
Xiaowen Liu	33034957	Cancer Med	IHC
Pingping Tan	35183538	Neuropharmacology	WB,IF

Stockage

Stockage:

Stocker à -20°C. Stable pendant un an après l'expédition.

Tampon de stockage:

PBS avec azoture de sodium à 0,02 % et glycérol à 50 % pH 7,3

L'aliquotage n'est pas nécessaire pour le stockage à -20C

*** Les 20ul contiennent 0,1% de BSA.

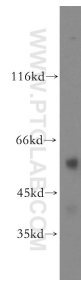
For technical support and original validation data for this product please contact:

T: 1 (888) 4PTGLAB (1-888-478-4522) (toll free in USA), or 1(312) 455-8498 (outside USA)

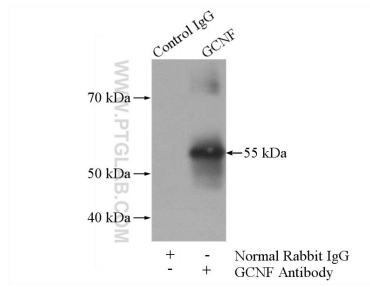
E: proteintech@ptglab.com
W: ptglab.com

This product is exclusively available under Proteintech Group brand and is not available to purchase from any other manufacturer.

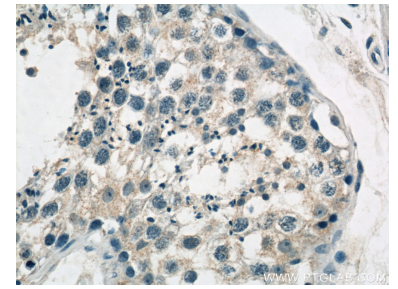
Données de validation sélectionnées



PC-3 cells were subjected to SDS PAGE followed by western blot with 12712-1-AP (GCNF antibody) at dilution of 1:300 incubated at room temperature for 1.5 hours.



IP Result of anti-GCNF (IP:12712-1-AP, 4ug; Detection:12712-1-AP 1:800) with mouse testis tissue lysate 4000ug.



Immunohistochemical analysis of paraffin-embedded human testis tissue slide using 12712-1-AP (GCNF antibody at dilution of 1:50 (under 40x lens)).