

À des fins de recherche uniquement

Anticorps Polyclonal de lapin anti-Dystrophin



Numéro de catalogue: 12715-1-AP

Phare

21 Publications

Informations de base

Numéro de catalogue:

12715-1-AP

Taille:

150ul, Concentration: 1000 µg/ml by

Nanodrop;

Hôte:

Lapin

Isotype:

IgG

Immunogen Catalog Number:

AG3408

Numéro d'acquisition GenBank:

BC028720

Identification du gène (NCBI):

1756

Nom complet:

dystrophin

MW calculé

3685 aa, 427 kDa

MW observés:

70 kDa, 430 kDa

Méthode de purification:

Purification par affinité contre l'antigène

Dilutions recommandées:

WB 1:3000-1:15000

IP 0.5-4.0 ug for IP and 1:500-1:3000 for WB

IHC 1:50-1:500

IF 1:20-1:200

Applications

Applications testées:

IF, IHC, IP, WB, ELISA

Demandes citées:

IF, IHC, IP, WB

Spécificité de l'espèce:

Humain, rat, souris

Espèces citées:

Humain, rat, souris

Remarque-IHC: il est suggéré de démasquer l'antigène avec un tampon de TE buffer pH 9,0; (*) À défaut, le démasquage de l'antigène peut être effectué avec un tampon citrate pH 6,0.

Contrôles positifs:

WB : tissu cérébral de souris, cellules HepG2, cerveau de rat, poumon de souris

IP : tissu cérébral de souris,

IHC : tissu de muscle squelettique humain, tissu cardiaque de souris, tissu cardiaque humain, tissu de muscle squelettique de souris

IF : tissu de muscle squelettique de souris, tissu cardiaque de rat

Informations générales

Dystrophin (DMD or BMD) is a large muscle protein whose mutations cause Duchenne muscular dystrophy (DMD) and Becker muscular dystrophy (BMD), the childhood neuromuscular disorders that result in progressive muscle weakness, respiratory difficulties and cardiovascular dysfunction. Dystrophin is a crucial component of the dystrophin-glycoprotein complex which is essential for muscle membrane integrity and stability. Dystrophin is located on the cytoplasmic face of the sarcolemma and connects the cytoskeletal network to the sarcolemma and extracellular matrix. Multiple isoforms of dystrophin exist due to the alternative splicing, with a wide range of MW (69-72, 110-143, 271, 426 kDa). Most tissues contain transcripts of several isoforms.

Publications notables

Autrice	Pubmed ID	Journal	Application
Takahiro Fujimoto	32996569	Hum Mol Genet	WB,IP,IF
Jihad El Andari	36129972	Sci Adv	WB,IF
Wen-Tong Liu	30340642	J Neuroinflammation	WB

Stockage

Stockage:

Stocker à -20°C. Stable pendant un an après l'expédition.

Tampon de stockage:

PBS avec azoture de sodium à 0,02 % et glycérol à 50 % pH 7,3

L'aliquotage n'est pas nécessaire pour le stockage à -20C

*** Les 20ul contiennent 0,1% de BSA.

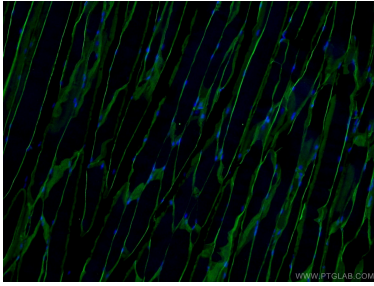
For technical support and original validation data for this product please contact:

T: 1 (888) 4PTGLAB (1-888-478-4522) (toll free in USA), or 1(312) 455-8498 (outside USA)

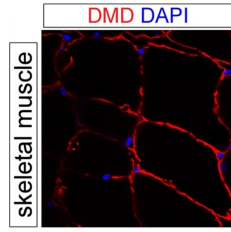
E: proteintech@ptglab.com
W: ptglab.com

This product is exclusively available under Proteintech Group brand and is not available to purchase from any other manufacturer.

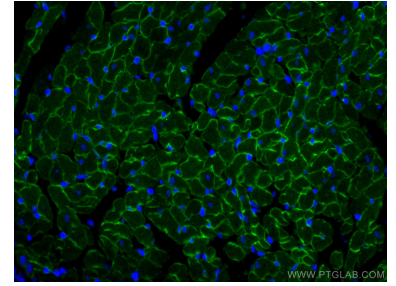
Données de validation sélectionnées



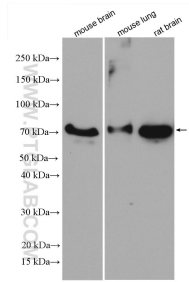
Immunofluorescent analysis of (4% PFA) fixed mouse skeletal muscle tissue using 12715-1-AP (Dystrophin antibody) at dilution of 1:50 and Alexa Fluor 488-conjugated AffiniPure Goat Anti-Rabbit IgG(H+L).



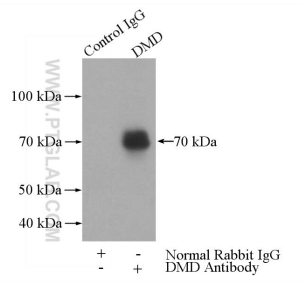
IF result of anti-DMD (12715-1-AP, 1:500) with PFA fixed mouse skeletal muscle tissue by Dr. Daniel Kopinke.



Immunofluorescent analysis of (4% PFA) fixed rat heart tissue using Dystrophin antibody (12715-1-AP) at dilution of 1:200 and CoraLite®488-Conjugated AffiniPure Goat Anti-Rabbit IgG(H+L), Connexin 43 antibody (26980-1-AP, green).



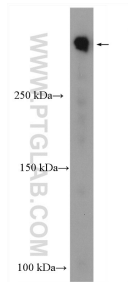
Various lysates were subjected to SDS PAGE followed by western blot with 12715-1-AP (Dystrophin antibody) at dilution of 1:5000 incubated at room temperature for 1.5 hours.



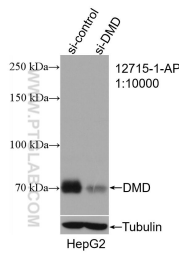
IP Result of anti-Dystrophin (IP:12715-1-AP, 4ug; Detection:12715-1-AP 1:1500) with mouse brain tissue lysate 3440ug.



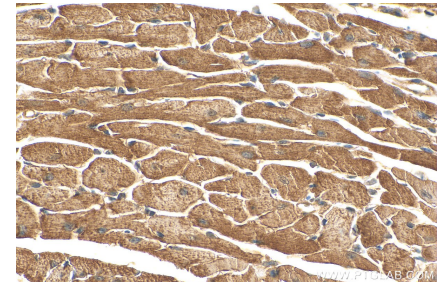
Immunohistochemical analysis of paraffin-embedded human skeletal muscle tissue slide using 12715-1-AP (Dystrophin antibody) at dilution of 1:200 (under 40x lens).



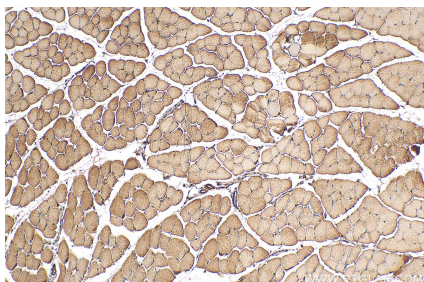
HepG2 cells were subjected to SDS PAGE followed by western blot with 12715-1-AP (Dystrophin antibody) at dilution of 1:20000 incubated at room temperature for 1.5 hours.



WB result of Dystrophin antibody (12715-1-AP; 1:10000; incubated at room temperature for 1.5 hours) with sh-Control and sh-Dystrophin transfected HepG2 cells.



Immunohistochemical analysis of paraffin-embedded mouse heart tissue slide using 12715-1-AP (Dystrophin antibody) at dilution of 1:200 (under 40x lens). Heat mediated antigen retrieval with Tris-EDTA buffer (pH 9.0).



Immunohistochemical analysis of paraffin-embedded mouse skeletal muscle tissue slide using 12715-1-AP (Dystrophin antibody) at dilution of 1:200 (under 10x lens). Heat mediated antigen retrieval with Tris-EDTA buffer (pH 9.0).