

À des fins de recherche uniquement

Anticorps Polyclonal de lapin anti-TROVE2



Numéro de catalogue: 12718-1-AP

1 Publications

Informations de base

Numéro de catalogue:
12718-1-AP

Taille:
150ul , Concentration: 170 µg/ml by Nanodrop and 133 µg/ml by Bradford method using BSA as the standard;

Hôte:
Lapin

Isotype:
IgG

Immunogen Catalog Number:
AG3412

Numéro d'acquisition GenBank:
BC036658

Identification du gène (NCBI):
6738

Nom complet:
TROVE domain family, member 2

MW calculé
60 kDa

MW observés:
60 kDa

Méthode de purification:
Purification par affinité contre l'antigène

Dilutions recommandées:
WB 1:500-1:3000
IF 1:10-1:100

Applications

Applications testées:
IF, WB, ELISA

Demandes citées:
WB

Spécificité de l'espèce:
Humain, rat, souris

Espèces citées:
Humain

Contrôles positifs:

WB : cellules MCF7, cellules HeLa, cellules PC-3, tissu de thymus de souris, tissu splénique de rat

IF : cellules PC-3,

Informations générales

TROVE2, also named as RO60 or RoRNP, is a 538 amino acid protein, which is localized in cytoplasmic mRNP granules containing untranslated mRNAs. TROVE2 as a RNA-binding protein that binds to misfolded non-coding RNAs, pre-5S rRNA, and several small cytoplasmic RNA molecules known as Y RNAs. TROVE2 may stabilize some of these RNAs and protect them from degradation (PubMed:18056422). TROVE2 binds to endogenous Alu retroelements which are induced by type I IFN and stimulate proinflammatory cytokine secretion.

Publications notables

Autrice	Pubmed ID	Journal	Application
Chuang Li	35410432	J Exp Clin Cancer Res	WB

Stockage

Stockage:
Stocker à -20°C. Stable pendant un an après l'expédition.

Tampon de stockage:
PBS avec azoture de sodium à 0,02 % et glycérol à 50 % pH 7,3
L'aliqotage n'est pas nécessaire pour le stockage à -20C

*** Les 20ul contiennent 0,1% de BSA.

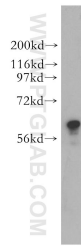
For technical support and original validation data for this product please contact:

T: 1 (888) 4PTGLAB (1-888-478-4522) (toll free in USA), or 1(312) 455-8498 (outside USA)

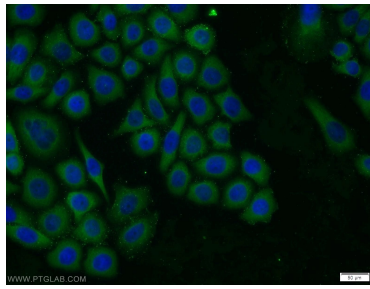
E: proteintech@ptglab.com
W: ptglab.com

This product is exclusively available under Proteintech Group brand and is not available to purchase from any other manufacturer.

Données de validation sélectionnées



MCF7 cells were subjected to SDS PAGE followed by western blot with 12718-1-AP (TROVE2 antibody) at dilution of 1:500 incubated at room temperature for 1.5 hours.



Immunofluorescent analysis of PC-3 cells using 12718-1-AP (TROVE2 antibody) at dilution of 1:25 and Alexa Fluor 488-conjugated AffiniPure Goat Anti-Rabbit IgG(H+L).