

À des fins de recherche uniquement

Anticorps Polyclonal de lapin anti- Complement factor H



Numéro de catalogue: 12748-1-AP

1 Publications

Informations de base

Numéro de catalogue:

12748-1-AP

Taille:

150ul, Concentration: 600 µg/ml by Nanodrop;

Hôte:

Lapin

Isotype:

IgG

Immunogen Catalog Number:

AG3482

Numéro d'acquisition GenBank:

BC037285

Identification du gène (NCBI):

3075

Nom complet:

complement factor H

MW calculé

1231 aa, 139 kDa

MW observés:

140-150 kDa

Méthode de purification:

Purification par affinité contre l'antigène

Dilutions recommandées:

WB 1:1000-1:6000

IP 0.5-4.0 ug for IP and 1:500-1:2000 for WB

IHC 1:50-1:500

IF 1:50-1:500

Applications

Applications testées:

IF, IHC, IP, WB, ELISA

Demandes citées:

WB

Spécificité de l'espèce:

Humain

Espèces citées:

Humain

Contrôles positifs:

WB : plasma humain, sang humain, Sanguin humain

IP : tissu plasmatique humain,

IHC : tissu de cancer du foie humain,

IF : tissu de cancer du foie humain,

Remarque-IHC: il est suggéré de démasquer l'antigène avec un tampon de TE buffer pH 9,0; (*) À défaut, le démasquage de l'antigène peut être effectué avec un tampon citrate pH 6,0.

Informations générales

Complement factor H (CFH) is an abundant plasma glycoprotein that regulates the function of the alternative complement pathway in fluid phase and on cellular surfaces (PMID: 2963625). Factor H binds to C3b, accelerates the decay of the alternative pathway C3-convertase (C3bBb) and acts as a cofactor for the factor I-mediated proteolytic inactivation of C3b (PMID: 15163532). It plays a critical role in the homeostasis of the complement system in plasma and in the protection of bystander host cells and tissues from damage by complement activation. Abnormalities in factor H have been associated with renal disease (PMID: 18190458).

Publications notables

Autrice	Pubmed ID	Journal	Application
Muyao Ye	34642907	Immunol Res	WB

Stockage

Stockage:

Stocker à -20°C. Stable pendant un an après l'expédition.

Tampon de stockage:

PBS avec azote de sodium à 0,02 % et glycérol à 50 % pH 7,3

L'aliquotage n'est pas nécessaire pour le stockage à -20C

*** Les 20ul contiennent 0,1% de BSA.

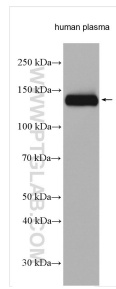
For technical support and original validation data for this product please contact:

T: 1 (888) 4PTGLAB (1-888-478-4522) (toll free in USA), or 1(312) 455-8498 (outside USA)

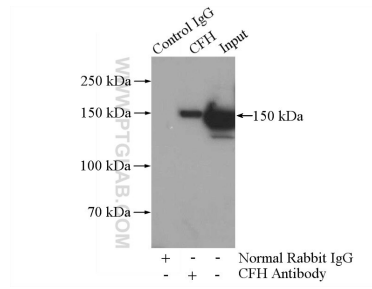
E: proteintech@ptglab.com
W: ptglab.com

This product is exclusively available under Proteintech Group brand and is not available to purchase from any other manufacturer.

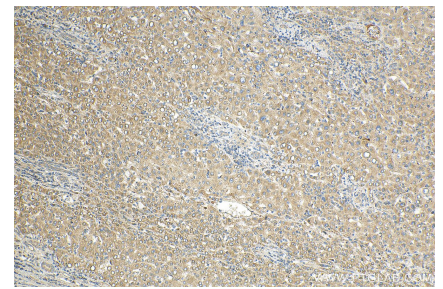
Données de validation sélectionnées



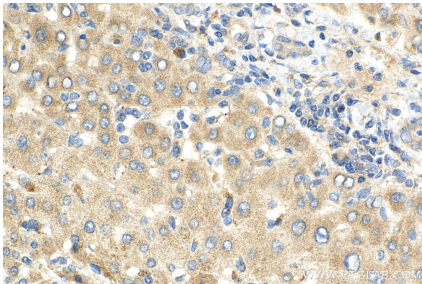
human plasma were subjected to SDS PAGE followed by western blot with 12748-1-AP (Complement factor H antibody) at dilution of 1:3000 incubated at room temperature for 1.5 hours.



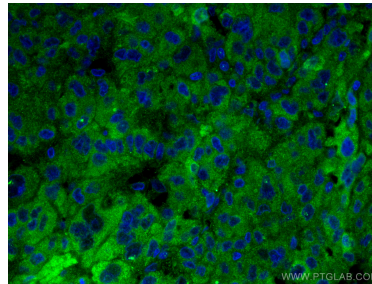
IP Result of anti-Complement factor H (IP:12748-1-AP, 4ug; Detection:12748-1-AP 1:1000) with human plasma lysate 4000ug.



Immunohistochemical analysis of paraffin-embedded human liver cancer tissue slide using 12748-1-AP (Complement factor H antibody) at dilution of 1:200 (under 10x lens). Heat mediated antigen retrieval with Tris-EDTA buffer (pH 9.0).



Immunohistochemical analysis of paraffin-embedded human liver cancer tissue slide using 12748-1-AP (Complement factor H antibody) at dilution of 1:200 (under 40x lens). Heat mediated antigen retrieval with Tris-EDTA buffer (pH 9.0).



Immunofluorescent analysis of (4% PFA) fixed human liver cancer tissue using Complement factor H antibody (12748-1-AP) at dilution of 1:200 and CoralLite® 488-Conjugated AffiniPure Goat Anti-Rabbit IgG(H+L).