

À des fins de recherche uniquement

Anticorps Polyclonal de lapin anti-CDCP1



Numéro de catalogue: 12754-1-AP

2 Publications

Informations de base

Numéro de catalogue:
12754-1-AP

Taille:
150ul, Concentration: 200 µg/ml by Nanodrop and 133 µg/ml by Bradford method using BSA as the standard;

Hôte:
Lapin

Isotype:
IgG

Immunogen Catalog Number:
AG3439

Numéro d'acquisition GenBank:
BC021099

Identification du gène (NCBI):
64866

Nom complet:
CUB domain containing protein 1

MW calculé
836 aa, 93 kDa

MW observés:
72 kDa, 130 kDa

Méthode de purification:
Purification par affinité contre l'antigène

Dilutions recommandées:
WB 1:500-1:2000

Applications

Applications testées:
FC, WB, ELISA

Demandes citées:
WB

Spécificité de l'espèce:
Humain, rat, souris

Espèces citées:
Humain, souris

Contrôles positifs:

WB : cellules A549, cellules LNCaP, cellules PC-3

Informations générales

CDCP1, also named as CD318, TRASK and SIMA 135, is a 135-140 kDa transmembrane protein that contains three CUB domains within the extracellular region and a hexalysine stretch within the cytoplasmic region. A soluble form with MW 80 kDa (p80) is cleaved at an unidentified site on the N-terminal side. CDCP1 is a novel marker for hematopoietic stem cells.

Publications notables

Autrice	Pubmed ID	Journal	Application
Fei Geng	33260155	Aging (Albany NY)	WB
Wanzun Lin	32308755	Theranostics	WB

Stockage

Stockage:

Stocker à -20°C. Stable pendant un an après l'expédition.

Tampon de stockage:

PBS avec azoture de sodium à 0,02 % et glycérol à 50 % pH 7,3

L'aliquotage n'est pas nécessaire pour le stockage à -20C

*** Les 20ul contiennent 0,1% de BSA.

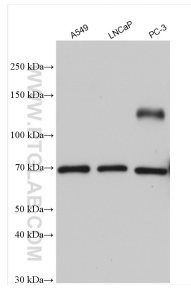
For technical support and original validation data for this product please contact:

T: 1 (888) 4PTGLAB (1-888-478-4522) (toll free in USA), or 1(312) 455-8498 (outside USA)

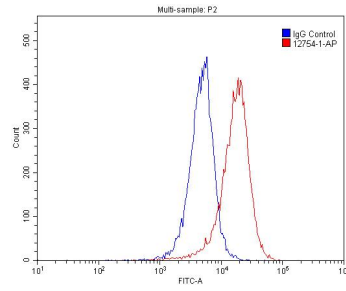
E: proteintech@ptglab.com
W: ptglab.com

This product is exclusively available under Proteintech Group brand and is not available to purchase from any other manufacturer.

Données de validation sélectionnées



Various lysates were subjected to SDS PAGE followed by western blot with 12754-1-AP (CDCP1 antibody) at dilution of 1:1000 incubated at room temperature for 1.5 hours.



1×10^6 A549 cells were stained with 0.2ug CDCP1 antibody (12754-1-AP, red) and control antibody (blue). Fixed with 4% PFA blocked with 3% BSA (30 min). Alexa Fluor 488-conjugated AffiniPure Goat Anti-Rabbit IgG(H+L) with dilution 1:1500.