

À des fins de recherche uniquement

# Anticorps Polyclonal de lapin anti-EML1



Numéro de catalogue: 12765-1-AP

1 Publications

## Informations de base

Numéro de catalogue: 12765-1-AP	Numéro d'acquisition GenBank: BC033043	Méthode de purification: Purification par affinité contre l'antigène
Taille: 150ul , Concentration: 700 µg/ml by Nanodrop and 360 µg/ml by Bradford method using BSA as the standard;	Identification du gène (NCBI): 2009	Dilutions recommandées: WB 1:1000-1:6000
Hôte: Lapin	Nom complet: echinoderm microtubule associated protein like 1	
Isotype: IgG	MW calculé: 815 aa, 90 kDa	
Immunogen Catalog Number: AG3429	MW observés: 90-92 kDa	

## Applications

Applications testées: WB, ELISA	Contrôles positifs: WB : tissu cérébral de souris, tissu cérébral de rat
Demandes citées: IF, WB	
Spécificité de l'espèce: Humain, rat, souris	

## Informations générales

EML1 is a strong candidate for the Usher syndrome type 1A gene. Usher syndromes (USHs) are a group of genetic disorders consisting of congenital deafness, retinitis pigmentosa, and vestibular dysfunction of variable onset and severity depending on the genetic type. The disease process in USHs involves the entire brain and is not limited to the posterior fossa or auditory and visual systems. The USHs are categorized as type I (USH1A, USH1B, USH1C, USH1D, USH1E and USH1F), type II (USH2A and USH2B) and type III (USH3). The type I is the most severe form. Gene loci responsible for these three types are all mapped.

## Publications notables

Autrice	Pubmed ID	Journal	Application
Hong Yin	34124073	Front Cell Dev Biol	IF, WB

## Stockage

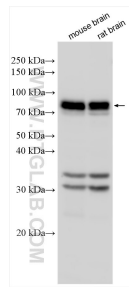
Stockage:  
Stocker à -20°C. Stable pendant un an après l'expédition.  
Tampon de stockage:  
PBS avec azoture de sodium à 0,02 % et glycérol à 50 % pH 7,3  
L'aliquotage n'est pas nécessaire pour le stockage à -20C

\*\*\* Les 20ul contiennent 0,1% de BSA.

For technical support and original validation data for this product please contact:  
T: 1 (888) 4PTGLAB (1-888-478-4522) (toll free in USA), or 1(312) 455-8498 (outside USA)  
E: proteintech@ptglab.com  
W: ptglab.com

This product is exclusively available under Proteintech Group brand and is not available to purchase from any other manufacturer.

## Données de validation sélectionnées



Various lysates were subjected to SDS PAGE followed by western blot with 12765-1-AP (EML1 antibody) at dilution of 1:3000 incubated at room temperature for 1.5 hours.