

À des fins de recherche uniquement

Anticorps Polyclonal de lapin anti-IFITM2



Numéro de catalogue: 12769-1-AP

Phare

38 Publications

Informations de base

Numéro de catalogue:
12769-1-AP

Taille:
150ul, Concentration: 350 µg/ml by Nanodrop and 133 µg/ml by Bradford method using BSA as the standard;

Hôte:
Lapin

Isotype:
IgG

Immunogen Catalog Number:
AG3451

Numéro d'acquisition GenBank:
BC009696

Identification du gène (NCBI):
10581

Nom complet:
interferon induced transmembrane protein 2 (1-8D)

MW calculé
132 aa, 15 kDa

MW observés:
15 kDa

Méthode de purification:
Purification par affinité contre l'antigène

Dilutions recommandées:
WB 1:1000-1:4000
IP 0.5-4.0 ug par IP and 1:200-1:1000 for WB
IHC 1:20-1:200
IF 1:20-1:200

Applications

Applications testées:
FC, IF, IHC, IP, WB, ELISA

Demandes citées:
FC, IF, IP, WB

Spécificité de l'espèce:
Humain, souris

Espèces citées:
Humain, porc, souris

Remarque-IHC: il est suggéré de démasquer l'antigène avec un tampon de TE buffer pH 9,0; (*) A défaut, le démasquage de l'antigène peut être effectué avec un tampon citrate pH 6,0.

Contrôles positifs:

WB : cellules HepG2, cellules MCF-7

IP : cellules HepG2,

IHC : tissu de cancer du sein humain, tissu cérébral de souris

IF : cellules HepG2,

Informations générales

IFITM2, also named as 1-8D, belongs to the CD225 family. It is an IFN-induced antiviral protein that mediates cellular innate immunity to at least three major human pathogens, namely influenza A H1N1 virus, West Nile virus (WNV), and dengue virus, by inhibiting the early steps of replication. IFITM2 induces cell cycle arrest and mediates apoptosis by caspase activation and in p53-independent manner. It is overexpressed in colon carcinoma. IFITM2 is a novel pro-apoptotic gene that will provide new insights into the regulated cellular pathways to death. IFITM proteins are recently identified as viral restriction factors that inhibit infection mediated by the influenza A virus (IAV) hemagglutinin (HA) protein. Also they serve as important components of the innate immune system to restrict HIV-1 infection. Catalog#12769-1-AP is a rabbit polyclonal antibody produced with full-length of human IFITM2.

Publications notables

Autrice	Pubmed ID	Journal	Application
Florian Wensch	25256397	Viruses	WB
Wei Zhang	25228491	J Gen Virol	WB, IF
Jinsun Kim	33209202	Anim Cells Syst (Seoul)	WB

Stockage

Stockage:

Stocker à -20°C. Stable pendant un an après l'expédition.

Tampon de stockage:

PBS avec azoture de sodium à 0,02 % et glycérol à 50 % pH 7,3

L'aliquotage n'est pas nécessaire pour le stockage à -20C

*** Les 20ul contiennent 0,1% de BSA.

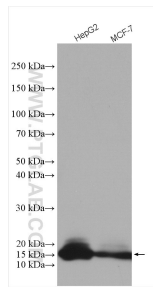
For technical support and original validation data for this product please contact:

T: 1 (888) 4PTGLAB (1-888-478-4522) (toll free in USA), or 1(312) 455-8498 (outside USA)

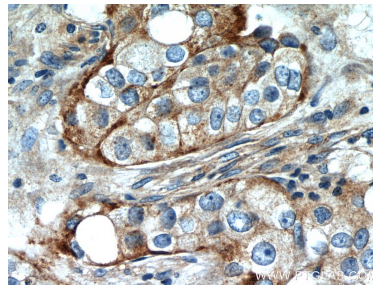
E: proteintech@ptglab.com
W: ptglab.com

This product is exclusively available under Proteintech Group brand and is not available to purchase from any other manufacturer.

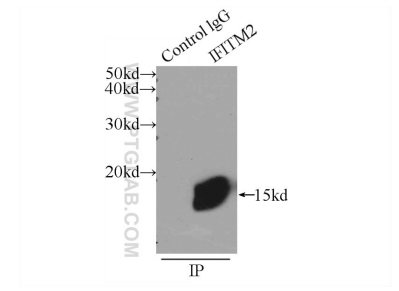
Données de validation sélectionnées



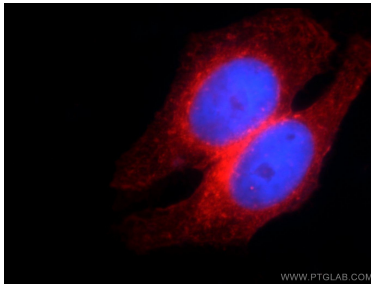
Various lysates were subjected to SDS PAGE followed by western blot with 12769-1-AP (IFITM2 antibody) at dilution of 1:2000 incubated at room temperature for 1.5 hours.



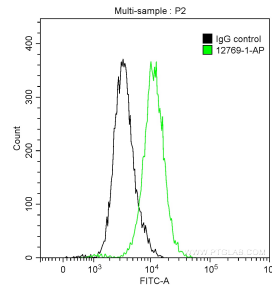
Immunohistochemical analysis of paraffin-embedded human breast cancer slide using 12769-1-AP (IFITM2 Antibody) at dilution of 1:50.



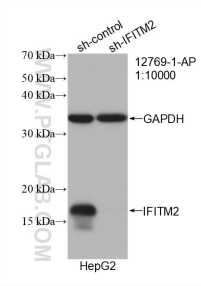
IP Result of anti-IFITM2 (IP:12769-1-AP, 3ug; Detection:12769-1-AP 1:300) with HepG2 cells lysate 1720ug.



Immunofluorescent analysis of HepG2 cells using 12769-1-AP (IFITM2 antibody) at dilution of 1:50 and Rhodamine-Goat anti-Rabbit IgG.



1×10^6 MCF-7 cells were stained with 0.2 ug Anti-Human IFITM2 (12769-1-AP) and Coralite@488-Conjugated AffiniPure Goat Anti-Rabbit IgG(H+L) at dilution 1:1000 (green), and 0.2 ug Control Antibody. Cells were fixed with 90% MeOH.



WB result of IFITM2 antibody (12769-1-AP; 1:10000; incubated at room temperature for 1.5 hours) with sh-Control and sh-IFITM2 transfected HepG2 cells.