

À des fins de recherche uniquement

Anticorps Polyclonal de lapin anti-CP110



Numéro de catalogue: 12780-1-AP

Phare

130 Publications

Informations de base

Numéro de catalogue:
12780-1-AP

Taille:
150ul, Concentration: 550 µg/ml by
Nanodrop;

Hôte:
Lapin

Isotype:
IgG

Immunogen Catalog Number:
AG3489

Numéro d'acquisition GenBank:
BC036654

Identification du gène (NCBI):
9738

Nom complet:
CP110 protein

MW calculé:
991 aa, 111 kDa

MW observés:
113 kDa

Méthode de purification:
Purification par affinité contre
l'antigène

Dilutions recommandées:
WB 1:2000-1:12000
IP 0.5-4.0 ug for IP and 1:500-1:3000
for WB
IHC 1:250-1:1000
IF 1:50-1:500

Applications

Applications testées:
FC, IF, IHC, IP, WB, ELISA

Demandes citées:
IF, IHC, IP, WB

Spécificité de l'espèce:
canin, Humain, rat, souris

Espèces citées:
canin, Drosophile, Humain, poisson-zèbre, rat, souris,
xénope

**Remarque-IHC: il est suggéré de démasquer
l'antigène avec un tampon de TE buffer pH
9,0; (*) A défaut, 'le démasquage de
l'antigène peut être 'effectué avec un
tampon citrate pH 6,0.**

Contrôles positifs:

WB : cellules HCT 116, cellules HEK-293T, cellules
HeLa, cellules Jurkat, cellules MOLT-4

IP : cellules Jurkat,

IHC : tissu de cancer de la prostate humain,

IF : cellules A431,

Informations générales

CP110, also named as CCP110 and KIAA0419, is an 110kDa protein. This gene is different to the gene CEP110 (geneID:11064; CNTRL). CP110 is a centriolar protein that positively regulates centriole duplication while restricting centriole elongation and ciliogenesis. And it acts as a key negative regulator of ciliogenesis in collaboration with CEP97 by capping the mother centriole thereby preventing cilia formation.

Publications notables

Autrice	Pubmed ID	Journal	Application
Roberta Sala	32966175	Mol Biol Cell	IF
Chii Shyang Fong	30230954	Mol Biol Cell	
Emmanuelle Steib	32946374	Elife	IF

Stockage

Stockage:

Stocker à -20°C. Stable pendant un an après l'expédition.

Tampon de stockage:

PBS avec azoture de sodium à 0,02 % et glycérol à 50 % pH 7,3

L'aliquotage n'est pas nécessaire pour le stockage à -20C

*** Les 20ul contiennent 0,1% de BSA.

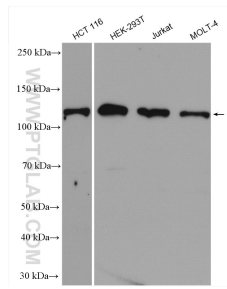
For technical support and original validation data for this product please contact:

T: 1 (888) 4PTGLAB (1-888-478-4522) (toll free
in USA), or 1(312) 455-8498 (outside USA)

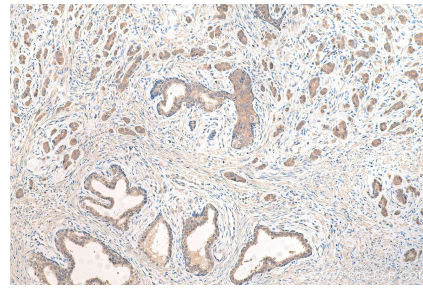
E: proteintech@ptglab.com
W: ptglab.com

This product is exclusively available under Proteintech Group brand and is not available to purchase from any other manufacturer.

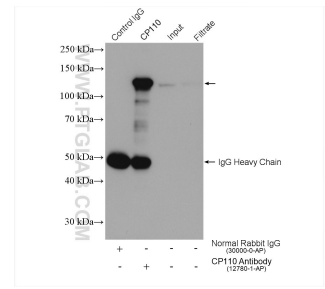
Données de validation sélectionnées



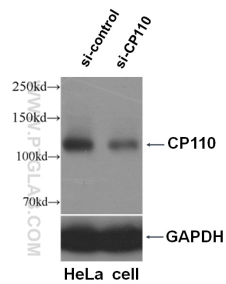
Various lysates were subjected to SDS PAGE followed by western blot with 12780-1-AP (CP110 antibody) at dilution of 1:6000 incubated at room temperature for 1.5 hours.



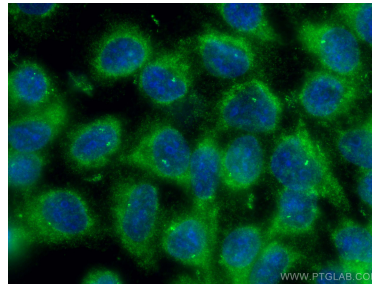
Immunohistochemical analysis of paraffin-embedded human prostate cancer tissue slide using 12780-1-AP (CP110 antibody) at dilution of 1:500 (under 10x lens). Heat mediated antigen retrieval with Tris-EDTA buffer (pH 9.0).



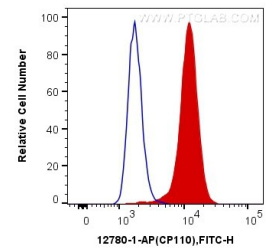
IP result of anti-CP110(IP:12780-1-AP, 4ug; Detection:12780-1-AP 1:1500) with Jurkat cells lysate 2400 ug.



WB result of CP110 antibody (12780-1-AP, 1:500) with si-control and si-CP110 transfected HeLa cells.



Immunofluorescent analysis of (-20°C Methanol) fixed A431 cells using CP110 antibody (12780-1-AP) at dilution of 1:200 and CoraLite®488-Conjugated AffiniPure Goat Anti-Rabbit IgG(H+L).



1X10⁶ HeLa cells were intracellularly stained with 0.2 ug Anti-Human CP110 (12780-1-AP) and CoraLite®488-Conjugated AffiniPure Goat Anti-Rabbit IgG(H+L) at dilution 1:1000 (red), or 0.2 ug Control Antibody. Cells were fixed with 4% PFA and permeabilized with Flow Cytometry Perm Buffer (PF00011-C).