

À des fins de recherche uniquement

Anticorps Polyclonal de lapin anti-human BCL2



Numéro de catalogue: 12789-1-AP

Phare

2075 Publications

Informations de base

Numéro de catalogue:
12789-1-AP

Taille:
150ul, Concentration: 500 µg/ml by
Nanodrop;

Hôte:
Lapin

Isotype:
IgG

Immunogen Catalog Number:
AG3508

Numéro d'acquisition GenBank:
BC027258

Identification du gène (NCBI):
596

Nom complet:
B-cell CLL/lymphoma 2

MW calculé:
26 kDa

MW observés:
25-30 kDa

Méthode de purification:
Purification par affinité contre
l'antigène

Dilutions recommandées:
WB 1:2000-1:10000
IP 0.5-4.0 ug for IP and 1:500-1:2000
for WB
IHC 1:50-1:300

Applications

Applications testées:
FC, IHC, IP, WB, ELISA

Demandes citées:
ChIP, CoIP, FC, IF, IHC, IP, WB

Spécificité de l'espèce:
Humain

Espèces citées:
canin, Chèvre, Humain, Lapin, poisson-zèbre, porc,
poulet, Hamster, fish

**Remarque-IHC: il est suggéré de démasquer
l'antigène avec un tampon de TE buffer pH
9,0; (*) A défaut, 'le démasquage de
l'antigène peut être 'effectué avec un
tampon citrate pH 6,0.**

Contrôles positifs:

WB : cellules A431, cellules HEK-293, cellules HepG2,
cellules HL-60, cellules Jurkat, cellules MCF-7, cellules
U-251, cellules U2OS, cellules U-937

IP : cellules HL-60, cellules HepG2, cellules MCF-7

IHC : tissu d'amygdalite humain, tissu de lymphome
humain

Informations générales

BCL2 belongs to the Bcl-2 family. It suppresses apoptosis in a variety of cell systems including factor-dependent lymphohematopoietic and neural cells. BCL2 regulates cell death by controlling the mitochondrial membrane permeability (PMID: 10365962). It appears to function in a feedback loop system with caspases. BCL2 inhibits caspase activity either by preventing the release of cytochrome c from the mitochondria and/or by binding to the apoptosis-activating factor (APAF-1) (PMID: 10444588). This antibody is not suitable for rat and mouse species.

Publications notables

Autrice	Pubmed ID	Journal	Application
Xin Shen	36184549	Int Heart J	WB
Ling Guo	34867437	Front Physiol	WB
Yong Zhu	34660260	Front Oncol	WB

Stockage

Stockage:

Stocker à -20°C. Stable pendant un an après l'expédition.

Tampon de stockage:

PBS avec azoture de sodium à 0,02 % et glycérol à 50 % pH 7,3

L'aliquotage n'est pas nécessaire pour le stockage à -20C

*** Les 20ul contiennent 0,1% de BSA.

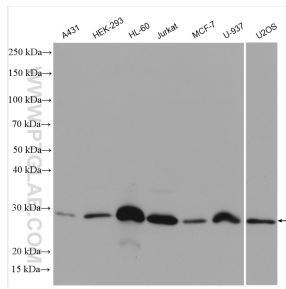
For technical support and original validation data for this product please contact:

T: 1 (888) 4PTGLAB (1-888-478-4522) (toll free
in USA), or 1(312) 455-8498 (outside USA)

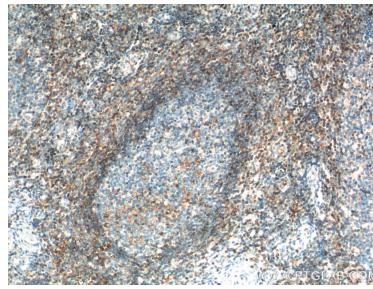
E: proteintech@ptglab.com
W: ptglab.com

This product is exclusively available under Proteintech Group brand and is not available to purchase from any other manufacturer.

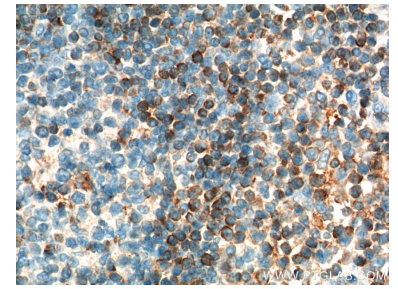
Données de validation sélectionnées



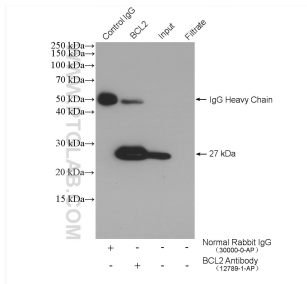
A431 cells were subjected to SDS PAGE followed by western blot with 12789-1-AP (BCL2 antibody) at dilution of 1:9000 incubated at room temperature for 1.5 hours.



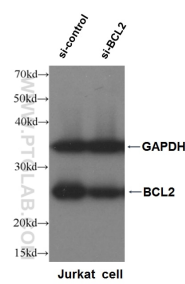
Immunohistochemical analysis of paraffin-embedded human tonsillitis tissue slide using 12789-1-AP (BCL2 Antibody) at dilution of 1:200 (under 10x lens). Heat mediated antigen retrieval with Tris-EDTA buffer (pH 9.0).



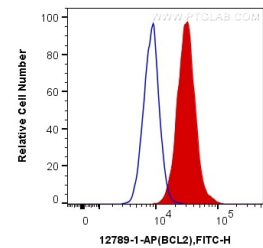
Immunohistochemical analysis of paraffin-embedded human tonsillitis tissue slide using 12789-1-AP (BCL2 Antibody) at dilution of 1:200 (under 40x lens). Heat mediated antigen retrieval with Tris-EDTA buffer (pH 9.0).



IP result of anti-BCL2 (IP:12789-1-AP, 4ug; Detection:12789-1-AP 1:1000) with HL-60 cells lysate 4000 ug.



WB result of BCL2 (12789-1-AP, 1:1000) with si-Control and si-BCL2 transfected Jurkat cells.



1×10^6 Jurkat cells were intracellularly stained with 0.2 ug Anti-Human BCL2 (12789-1-AP) and CoraLite®488-Conjugated AffiniPure Goat Anti-Rabbit IgG(H+L) at dilution 1:1000 (red), or 0.2 ug Control Antibody. Cells were fixed with 4% PFA and permeabilized with Flow Cytometry Perm Buffer (PF00011-C).