

À des fins de recherche uniquement

Anticorps Polyclonal de lapin anti-Centrin 1



Numéro de catalogue: 12794-1-AP

32 Publications

Informations de base

Numéro de catalogue:

12794-1-AP

Numéro d'acquisition GenBank:

BC029515

Méthode de purification:

Purification par affinité contre l'antigène

Taille:

150ul, Concentration: 850 µg/ml by Nanodrop and 340 µg/ml by Bradford method using BSA as the standard;

Identification du gène (NCBI):

1068

Dilutions recommandées:

WB 1:500-1:2000
IF 1:50-1:500

Hôte:

Lapin

MW calculé

172 aa, 20 kDa

Isotype:

IgG

MW observés:

20 kDa

Immunogen Catalog Number:

AG3529

Applications

Applications testées:

IF, WB, ELISA

Contrôles positifs:

WB : cellules HL-60, tissu cardiaque humain

Demandes citées:

IF, WB

IF : cellules hTERT-RPE1, cellules HeLa

Spécificité de l'espèce:

Humain

Espèces citées:

Humain, poisson-zèbre, souris

Informations générales

EF-hand type Ca²⁺-binding proteins consists of several family members, including Centrin-1, Centrin-2 and Centrin-3. The Centrin proteins are ubiquitously expressed cytoskeletal components that show increased expression during cell differentiation. Centrin-1 plays important roles in the determination of centrosome position and segregation, and in the process of microtubule severing. Centrin-1 is localized to the centrosome of interphase cells, and redistributes to the region of the spindle poles during mitosis, reflecting the dynamic behavior of the centrosome during the cell cycle.

Publications notables

Autrice	Pubmed ID	Journal	Application
Ivan Rosa E Silva	34499853	Structure	IF
ShuweiXie	30188792	Mol Biol Cell	IF
Zhenguang Ying	36280838	BMC Biol	IF

Stockage

Stockage:

Stocker à -20°C. Stable pendant un an après l'expédition.

Tampon de stockage:

PBS avec azoture de sodium à 0,02 % et glycérol à 50 % pH 7,3

L'aliquotage n'est pas nécessaire pour le stockage à -20C

*** Les 20ul contiennent 0,1% de BSA.

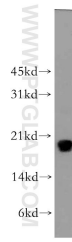
For technical support and original validation data for this product please contact:

T: 1 (888) 4PTGLAB (1-888-478-4522) (toll free in USA), or 1(312) 455-8498 (outside USA)

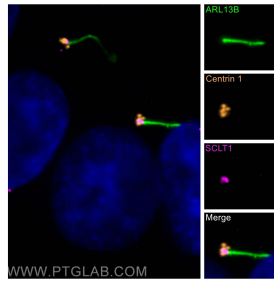
E: proteintech@ptglab.com
W: ptglab.com

This product is exclusively available under Proteintech Group brand and is not available to purchase from any other manufacturer.

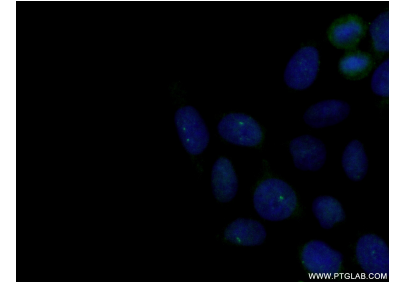
Données de validation sélectionnées



HL-60 cells were subjected to SDS PAGE followed by western blot with 12794-1-AP (Centrin 1 antibody) at dilution of 1:300 incubated at room temperature for 1.5 hours.



Immunofluorescent analysis of (-20°C Methanol) fixed hTERT-RPE1 cells using Centrin 1 antibody (12794-1-AP) at dilution of 1:50 and Cy3-conjugated Affinipure Goat Anti-Rabbit IgG(H+L), CoraLite®488 ARL13B antibody (CL488-17711, green), SCLT1 antibody (14875-1-AP, Magenta).



Immunofluorescent analysis of (-20°C Ethanol) fixed HeLa cells using 12794-1-AP (Centrin 1 antibody) at dilution of 1:50 and Alexa Fluor 488-conjugated Affinipure Goat Anti-Rabbit IgG(H+L).