

À des fins de recherche uniquement

Anticorps Polyclonal de lapin anti-BACE1



Numéro de catalogue: 12807-1-AP

Phare

32 Publications

Informations de base

Numéro de catalogue:
12807-1-AP

Taille:
150ul, Concentration: 300 µg/ml by
Nanodrop;

Hôte:
Lapin

Isotype:
IgG

Immunogen Catalog Number:
AG3559

Numéro d'acquisition GenBank:
BC036084

Identification du gène (NCBI):
23621

Nom complet:
beta-site APP-cleaving enzyme 1

MW calculé
501 aa, 56 kDa

MW observés:
70-75 kDa, 42-56 kDa

Méthode de purification:
Purification par affinité contre
l'antigène

Dilutions recommandées:
WB 1:500-1:1000
IP 0.5-4.0 ug for IP and 1:500-1:1000
for WB
IHC 1:100-1:400

Applications

Applications testées:
IHC, IP, WB, ELISA

Demandes citées:
IF, IHC, WB

Spécificité de l'espèce:
Humain, poisson-zèbre, rat, souris

Espèces citées:
Humain, rat, souris

Contrôles positifs:

WB : tissu cérébral de souris, cellules HeLa, cellules
PC-12, tissu cérébral de rat, tissu cérébral humain,
tissu de poisson-zèbre, tissu pancréatique de souris

IP : tissu cérébral de souris,

IHC : tissu cérébral de souris, tissu de cancer du
pancréas humain

**Remarque-IHC: il est suggéré de démasquer
l'antigène avec un tampon de TE buffer pH
9,0; (*) À défaut, le démasquage de
l'antigène peut être effectué avec un
tampon citrate pH 6,0.**

Informations générales

beta-secretase, encoded by BACE1(beta-site amyloid beta A4 precursor protein-cleaving enzyme1) gene, is a neuron-specific membrane-associated protease that participate in the two step proteolytic processing of the APP. Cleaves at the N-terminus of the A-beta peptide sequence, between residues 671 and 672 of APP, leads to the generation and extracellular release of beta-cleaved soluble APP, and a corresponding cell-associated C-terminal fragment which is later released by gamma-secretase. It has a high expression in the brain and pancreas. This protein has 6 isoforms produced by alternative splicing. BACE1 can be detected with different molecular weight: 42-56kD (prozymogen and isoforms), 65-75 (glycosylated forms) and 160kDa (dimer) (PMID:22741101; 21795680).

Publications notables

Autrice	Pubmed ID	Journal	Application
Ya-Shuo Zhao	28874056	Antioxid Redox Signal	WB
Maria Luisa Valle	36241022	Mol Cell Neurosci	WB
Yi-Wen Lin	34884565	Int J Mol Sci	WB, IHC

Stockage

Stockage:
Stocker à -20°C. Stable pendant un an après l'expédition.

Tampon de stockage:
PBS avec azoture de sodium à 0,02 % et glycérol à 50 % pH 7,3
L'aliquotage n'est pas nécessaire pour le stockage à -20C

*** Les 20ul contiennent 0,1% de BSA.

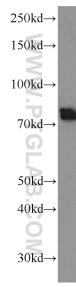
For technical support and original validation data for this product please contact:

T: 1 (888) 4PTGLAB (1-888-478-4522) (toll free
in USA), or 1(312) 455-8498 (outside USA)

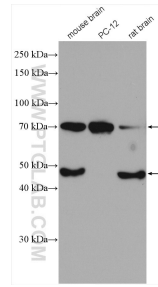
E: proteintech@ptglab.com
W: ptglab.com

This product is exclusively available under Proteintech Group brand and is not available to purchase from any other manufacturer.

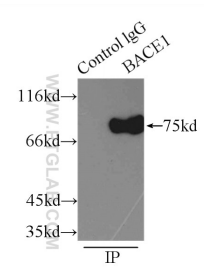
Données de validation sélectionnées



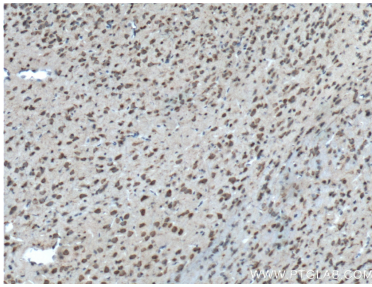
mouse brain tissue were subjected to SDS PAGE followed by western blot with 12807-1-AP (BACE1 antibody) at dilution of 1:500 incubated at room temperature for 1.5 hours.



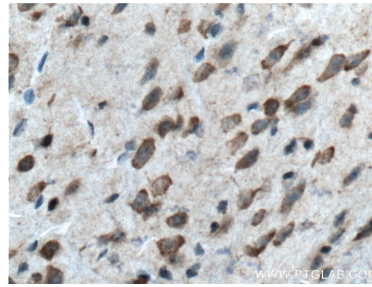
Various lysates were subjected to SDS PAGE followed by western blot with 12807-1-AP (BACE1 antibody) at dilution of 1:600 incubated at room temperature for 1.5 hours.



IP Result of anti-BACE1 (IP:12807-1-AP, 3ug; Detection:12807-1-AP 1:500) with mouse brain tissue lysate 5000ug.



Immunohistochemical analysis of paraffin-embedded mouse brain tissue slide using 12807-1-AP (BACE1 Antibody) at dilution of 1:200 (under 10x lens). Heat mediated antigen retrieval with Tris-EDTA buffer (pH 9.0).



Immunohistochemical analysis of paraffin-embedded mouse brain tissue slide using 12807-1-AP (BACE1 Antibody) at dilution of 1:200 (under 40x lens). Heat mediated antigen retrieval with Tris-EDTA buffer (pH 9.0).