

À des fins de recherche uniquement

# Anticorps Polyclonal de lapin anti-CLEC2/CLEC1B



Numéro de catalogue: 12814-1-AP

1 Publications

## Informations de base

Numéro de catalogue:

12814-1-AP

Taille:

150ul , Concentration: 150 µg/ml by Nanodrop;

Hôte:

Lapin

Isotype:

IgG

Immunogen Catalog Number:

AG3512

Numéro d'acquisition GenBank:

BC029554

Identification du gène (NCBI):

51266

Nom complet:

C-type lectin domain family 1, member B

MW calculé

27 kDa

MW observés:

32-38 kDa

Méthode de purification:

Purification par affinité contre l'antigène

Dilutions recommandées:

WB 1:1000-1:6000

## Applications

Applications testées:

WB, ELISA

Demandes citées:

IHC

Spécificité de l'espèce:

Humain

Espèces citées:

Humain

Contrôles positifs:

WB : plaquettes de sang périphérique humain,

## Informations générales

C-type lectin-like receptor 2 (CLEC2, also known as CLEC1B) is a type II transmembrane receptor of the C-type lectin superfamily, which are characterized by one or more C-type lectin-like domains (CTLDs) (PMID: 10671229; 34177942). CLEC2 contains a single YXXL/hemi-ITAM (immuno-receptor tyrosine-based activation motif) within its cytoplasmic domain. CLEC-2 is highly expressed on platelets and megakaryocytes and at low levels on other hematopoietic cells, including dendritic cells, neutrophils, monocytes, and macrophages (PMID: 21728173). The first identified ligand for CLEC2 was the platelet-aggregating snake venom protein rhodocytin, and podoplanin has been established as an endogenous ligand for CLEC2 (PMID: 26151067). CLEC2 is involved in thrombosis/hemostasis, tumor metastasis, and lymphangiogenesis (PMID: 20525685). CLEC2 can be glycosylated and has been detected as 32- and 40-kDa forms in platelets with varying degrees of glycosylation (PMID: 16174766; 25150298; 21781241).

## Publications notables

Autrice	Pubmed ID	Journal	Application
Xiaoliang Liang	35734199	Int J Gen Med	IHC

## Stockage

Stockage:

Stocker à -20°C. Stable pendant un an après l'expédition.

Tampon de stockage:

PBS avec azoture de sodium à 0,02 % et glycérol à 50 % pH 7,3

L'aliquotage n'est pas nécessaire pour le stockage à -20C

\*\*\* Les 20ul contiennent 0,1% de BSA.

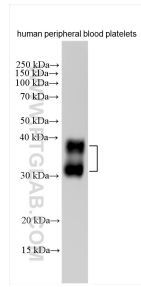
For technical support and original validation data for this product please contact:

T: 1 (888) 4PTGLAB (1-888-478-4522) (toll free in USA), or 1(312) 455-8498 (outside USA)

E: proteintech@ptglab.com  
W: ptglab.com

This product is exclusively available under Proteintech Group brand and is not available to purchase from any other manufacturer.

## Données de validation sélectionnées



human peripheral blood platelets were subjected to SDS PAGE followed by western blot with 12814-1-AP (CLEC2/CLEC1B antibody) at dilution of 1:3000 incubated at room temperature for 1.5 hours.