

À des fins de recherche uniquement

Anticorps Polyclonal de lapin anti-LRAT



Numéro de catalogue: 12815-1-AP

3 Publications

Informations de base

Numéro de catalogue:
12815-1-AP

Taille:
150ul , Concentration: 500 µg/ml by Nanodrop and 267 µg/ml by Bradford method using BSA as the standard;

Hôte:
Lapin

Isotype:
IgG

Immunogen Catalog Number:
AG3556

Numéro d'acquisition GenBank:
BC031053

Identification du gène (NCBI):
9227

Nom complet:
lecithin retinol acyltransferase (phosphatidylcholine--retinol O-acyltransferase)

MW calculé
230 aa, 26 kDa

MW observés:
26 kDa, 50-54 kDa

Méthode de purification:
Purification par affinité contre l'antigène

Dilutions recommandées:
WB 1:500-1:1000

Applications

Applications testées:
WB, ELISA

Demandes citées:
WB

Spécificité de l'espèce:
Humain, rat, souris

Espèces citées:
rat, souris

Contrôles positifs:

WB : tissu testiculaire de souris, cellules Y79

Informations générales

LRAT belongs to the H-rev107 family. LRAT transfers the acyl group from the sn-1 position of phosphatidylcholine to all-trans retinol, producing all-trans retinyl esters. LRAT plays a critical role in vision. It provides the all-trans retinyl ester substrates for the isomerohydrolase which processes the esters into 11-cis-retinol in the retinal pigment epithelium; due to a membrane-associated alcohol dehydrogenase, LRAT monomers (26kDa) interact in membranes and form functional homodimers (50-54 kDa) through protein-protein interactions and disulfide bond formation. Defects in LRAT are a cause of severe early-onset retinal dystrophy (RD). This antibody was generated against the internal residues of human LRAT. It is predicted to detect endogenous LRAT.

Publications notables

Autrice	Pubmed ID	Journal	Application
Wei Li	31353518	J Food Biochem	WB
Volha V Malechka	28734946	Am J Pathol	WB
Peter I Imoesi	37599827	iScience	WB

Stockage

Stockage:

Stocker à -20°C. Stable pendant un an après l'expédition.

Tampon de stockage:

PBS avec azoture de sodium à 0,02 % et glycérol à 50 % pH 7,3

L'aliquotage n'est pas nécessaire pour le stockage à -20C

*** Les 20ul contiennent 0,1% de BSA.

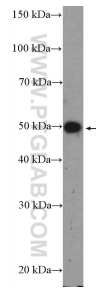
For technical support and original validation data for this product please contact:

T: 1 (888) 4PTGLAB (1-888-478-4522) (toll free in USA), or 1(312) 455-8498 (outside USA)

E: proteintech@ptglab.com
W: ptglab.com

This product is exclusively available under Proteintech Group brand and is not available to purchase from any other manufacturer.

Données de validation sélectionnées



mouse testis tissue were subjected to SDS PAGE followed by western blot with 12815-1-AP (LRAT Antibody) at dilution of 1:600 incubated at room temperature for 1.5 hours.