

À des fins de recherche uniquement

Anticorps Polyclonal de lapin anti-SRRM1



Numéro de catalogue: 12822-1-AP

Phare

3 Publications

Informations de base

Numéro de catalogue:

12822-1-AP

Taille:

150ul, Concentration: 600 µg/ml by Nanodrop and 300 µg/ml by Bradford method using BSA as the standard;

Hôte:

Lapin

Isotype:

IgG

Immunogen Catalog Number:

AG3513

Numéro d'acquisition GenBank:

BC036187

Identification du gène (NCBI):

10250

Nom complet:

serine/arginine repetitive matrix 1

MW calculé

904 aa, 102 kDa

MW observés:

120-160 kDa

Méthode de purification:

Purification par affinité contre l'antigène

Dilutions recommandées:

WB 1:500-1:1000

IP 0.5-4.0 µg for IP and 1:200-1:1000 for WB

Applications

Applications testées:

IP, WB, ELISA

Demandes citées:

CoIP, WB

Spécificité de l'espèce:

Humain, rat, souris

Espèces citées:

Humain

Contrôles positifs:

WB : tissu hépatique de souris, cellules HeLa, cellules Jurkat, HEK-293 traitées aux UV

IP : cellules HeLa,

Informations générales

SRRM1, also named as SRM160 and POP101, contains one PWI domain and belongs to the splicing factor SR family. As part of pre- and post-splicing multiprotein mRNP complexes, SRRM1 is involved in numerous pre-mRNA processing events. It promotes constitutive and exonic splicing enhancer (ESE)-dependent splicing activation by bridging together sequence-specific (SR family proteins, SFRS4, SFRS5 and TRA2B/SFRS10) and basal snRNP (SNRP70 and SNRPA1) factors of the spliceosome. SRRM1 stimulates mRNA 3'-end cleavage independently of the formation of an exon junction complex. It binds both pre-mRNA and spliced mRNA 20-25 nt upstream of exon-exon junctions. SRRM1 binds RNA and DNA with low sequence specificity and has similar preference for either double- or single-stranded nucleic acid substrates. SRRM1, a protein of high molecular weight (120-160kd), has a heavy glycosylation level and is normally highly phosphorylated. This antibody is a rabbit polyclonal antibody raised against residues near the N terminus of human SRRM1.

Publications notables

Autrice	Pubmed ID	Journal	Application
Xiaoyan Song	36270072	Tissue Cell	CoIP
Taiki Baba	33872670	Biochim Biophys Acta Mol Cell Res	WB
Wojcechowskyj Jason A JA	23684312	Cell Host Microbe	WB

Stockage

Stockage:

Stocker à -20°C. Stable pendant un an après l'expédition.

Tampon de stockage:

PBS avec azoture de sodium à 0,02 % et glycérol à 50 % pH 7,3

L'aliquotage n'est pas nécessaire pour le stockage à -20°C

*** Les 20ul contiennent 0,1% de BSA.

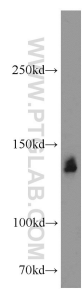
For technical support and original validation data for this product please contact:

T: 1 (888) 4PTGLAB (1-888-478-4522) (toll free in USA), or 1(312) 455-8498 (outside USA)

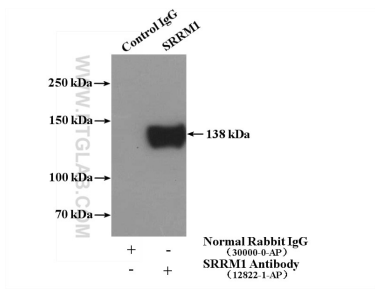
E: proteintech@ptglab.com
W: ptglab.com

This product is exclusively available under Proteintech Group brand and is not available to purchase from any other manufacturer.

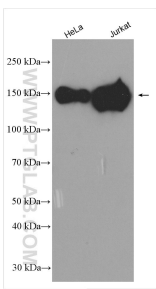
Données de validation sélectionnées



mouse liver tissue were subjected to SDS PAGE followed by western blot with 12822-1-AP (SRRM1 antibody) at dilution of 1:500 incubated at room temperature for 1.5 hours.



IP Result of anti-SRRM1 (IP:12822-1-AP, 4ug; Detection:12822-1-AP 1:300) with HeLa cells lysate 3200ug.



Various lysates were subjected to SDS PAGE followed by western blot with 12822-1-AP (SRRM1 antibody) at dilution of 1:2000 incubated at room temperature for 1.5 hours.