

À des fins de recherche uniquement

# Anticorps Polyclonal de lapin anti-SUPV3L1



Numéro de catalogue: 12826-1-AP

1 Publications

## Informations de base

Numéro de catalogue:  
12826-1-AP

Taille:  
150ul, Concentration: 800 µg/ml by  
Nanodrop;

Hôte:  
Lapin

Isotype:  
IgG

Immunogen Catalog Number:  
AG3542

Numéro d'acquisition GenBank:  
BC036112

Identification du gène (NCBI):  
6832

Nom complet:  
suppressor of var1, 3-like 1 (S.  
cerevisiae)

MW calculé  
786 aa, 88 kDa

MW observés:  
70-80 kDa

Méthode de purification:  
Purification par affinité contre  
l'antigène

Dilutions recommandées:  
WB 1:2000-1:10000  
IP 0.5-4.0 ug for IP and 1:200-1:1000  
for WB  
IF 1:50-1:500

## Applications

Applications testées:  
IF, IP, WB, ELISA

Demandes citées:  
WB

Spécificité de l'espèce:  
Humain, rat, souris

Espèces citées:  
Humain

Contrôles positifs:

WB : cellules HEK-293, cellules HeLa, cellules PC-3

IP : cellules HeLa,

IF : cellules HeLa,

## Informations générales

SUPV3L1 is a major helicase player in mitochondrial RNA metabolism. It is involved in the degradation of non-coding mitochondrial transcripts (MT-ncRNA) and tRNA-like molecules (PMID: 29967381).

## Publications notables

Autrice	Pubmed ID	Journal	Application
Selma L van Esveld	35023579	J Inherit Metab Dis	WB

## Stockage

Stockage:

Stocker à -20°C. Stable pendant un an après l'expédition.

Tampon de stockage:

PBS avec azoture de sodium à 0,02 % et glycérol à 50 % pH 7,3

L'aliquotage n'est pas nécessaire pour le stockage à -20C

\*\*\* Les 20ul contiennent 0,1% de BSA.

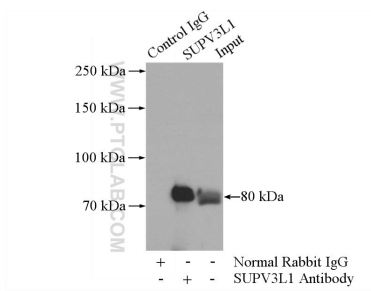
For technical support and original validation data for this product please contact:

T: 1 (888) 4PTGLAB (1-888-478-4522) (toll free  
in USA), or 1(312) 455-8498 (outside USA)

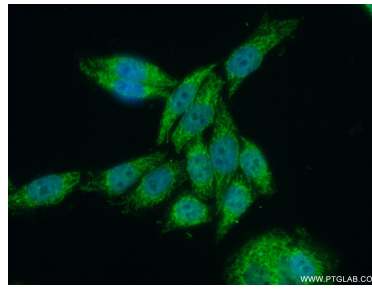
E: [proteintech@ptglab.com](mailto:proteintech@ptglab.com)  
W: [ptglab.com](http://ptglab.com)

This product is exclusively available under Proteintech Group brand and is not available to purchase from any other manufacturer.

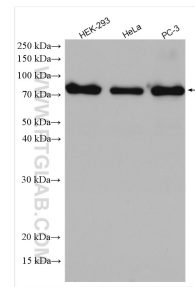
## Données de validation sélectionnées



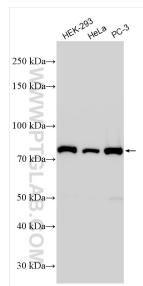
IP Result of anti-SUPV3L1 (IP:12826-1-AP, 4ug; Detection:12826-1-AP 1:300) with HeLa cells lysate 1200ug.



Immunofluorescent analysis of (10% Formaldehyde) fixed HeLa cells using 12826-1-AP (SUPV3L1 antibody) at dilution of 1:50 and Alexa Fluor 488-conjugated AffiniPure Goat Anti-Rabbit IgG(H+L).



Various lysates were subjected to SDS PAGE followed by western blot with 12826-1-AP (SUPV3L1 antibody) at dilution of 1:800 incubated at room temperature for 1.5 hours.



Various lysates were subjected to SDS PAGE followed by western blot with 12826-1-AP (SUPV3L1 antibody) at dilution of 1:5000 incubated at room temperature for 1.5 hours.