

À des fins de recherche uniquement

Anticorps Polyclonal de lapin anti-Alpha E-Catenin



Numéro de catalogue: 12831-1-AP

15 Publications

Informations de base

Numéro de catalogue: 12831-1-AP	Numéro d'acquisition GenBank: BC031262	Méthode de purification: Purification par affinité contre l'antigène
Taille: 150ul, Concentration: 700 µg/ml by Nanodrop and 413 µg/ml by Bradford method using BSA as the standard;	Identification du gène (NCBI): 1495	Dilutions recommandées: WB 1:1000-1:4000 IP 0.5-4.0 ug for IP and 1:500-1:1000 for WB IHC 1:20-1:200 IF 1:10-1:100
Hôte: Lapin	Nom complet: catenin (cadherin-associated protein), alpha 1, 102kDa	
Isotype: IgG	MW calculé: 906 aa, 100 kDa	
Immunogen Catalog Number: AG3565	MW observés: 100 kDa	

Applications

Applications testées:
FC, IF, IHC, IP, WB, ELISA

Demandes citées:
IF, WB

Spécificité de l'espèce:
Humain, rat, souris

Espèces citées:
Humain, rat, souris

Remarque-IHC: il est suggéré de démasquer l'antigène avec un tampon de TE buffer pH 9.0; (*) A défaut, 'le démasquage de l'antigène peut être effectué avec un tampon citrate pH 6,0.

Contrôles positifs:

WB : tissu utérin de souris,

IP : tissu cérébral de souris,

IHC : tissu d'estomac humain, tissu de cancer du pancréas humain, tissu de côlon humain

IF : cellules A431,

Informations générales

Alpha catenin is an essential component of adherens junctions that connects E-cadherin-β-catenin complexes with the actin cytoskeleton. It also recruits a range of other important proteins to developing intercellular junctions. Three alpha catenins exist in human: alpha-E-catenin, alpha-N-catenin, and alpha-T-catenin, which share substantial amino-acid sequence similarity but have distinct tissue distribution. alpha-E-catenin is ubiquitously expressed, alpha-N-catenin is restricted to neuronal tissue, and alpha-T-catenin is primarily expressed in heart tissue. Reduced levels of alpha-E-catenin protein seem to be characteristic of many different human cancers, including malignant tumours of the breast, colon, stomach, oesophagus, bladder and liver. In addition, the loss of alpha-E-catenin often correlates with the degree of tumour differentiation and metastasis.

Publications notables

Autrice	Pubmed ID	Journal	Application
Quan Zhou	31659258	Oncogene	WB
Xiaoli Ji	34650058	Cell Death Discov	WB
Yibin Zhou	30542490	Exp Ther Med	WB

Stockage

Stockage:

Stocker à -20°C. Stable pendant un an après l'expédition.

Tampon de stockage:

PBS avec azoture de sodium à 0,02 % et glycérol à 50 % pH 7,3

L'aliquotage n'est pas nécessaire pour le stockage à -20C

*** Les 20ul contiennent 0,1% de BSA.

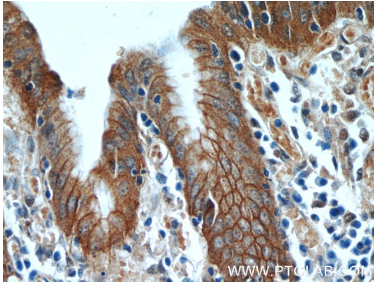
For technical support and original validation data for this product please contact:

T: 1 (888) 4PTGLAB (1-888-478-4522) (toll free in USA), or 1(312) 455-8498 (outside USA)

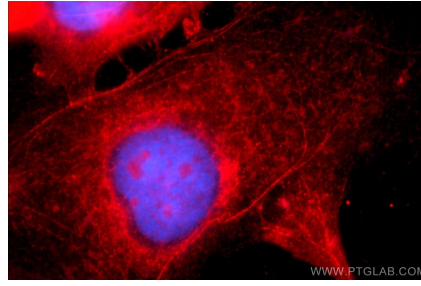
E: proteintech@ptglab.com
W: ptglab.com

This product is exclusively available under Proteintech Group brand and is not available to purchase from any other manufacturer.

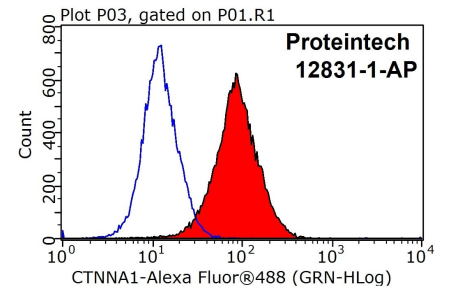
Données de validation sélectionnées



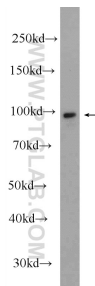
Immunohistochemical analysis of paraffin-embedded human stomach tissue slide using 12831-1-AP (Alpha E catenin antibody at dilution of 1:50 (under 40x lens).



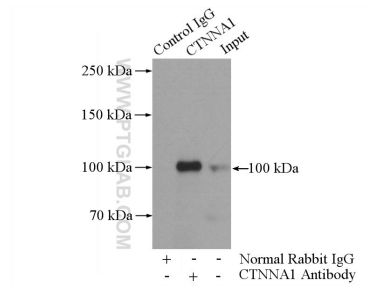
Immunofluorescent analysis of A431 cells using 12831-1-AP (Alpha E catenin antibody) at dilution of 1:25 and Rhodamine-Goat anti-Rabbit IgG.



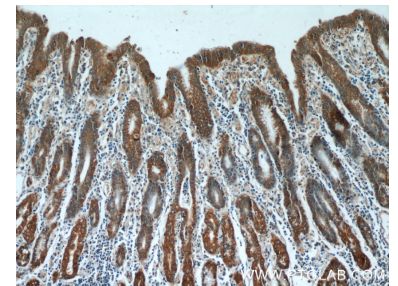
1X10⁶ MCF-7 cells were stained with 0.2ug Alpha E catenin antibody (12831-1-AP, red) and control antibody (blue). Fixed with 90% MeOH blocked with 3% BSA (30 min). Alexa Fluor 488-conjugated AffiniPure Goat Anti-Rabbit IgG(H+L) with dilution 1:1000.



mouse uterus tissue were subjected to SDS PAGE followed by western blot with 12831-1-AP (Alpha E catenin antibody at dilution of 1:2000 incubated at room temperature for 1.5 hours.



IP Result of anti-Alpha E catenin (IP:12831-1-AP, 4ug; Detection:12831-1-AP 1:700) with mouse brain tissue lysate 4000ug.



Immunohistochemical analysis of paraffin-embedded human stomach tissue slide using 12831-1-AP (Alpha E catenin antibody at dilution of 1:50 (under 10x lens).