

À des fins de recherche uniquement

Anticorps Polyclonal de lapin anti-KDM3A, JMJD1A



Numéro de catalogue: 12835-1-AP

Phare

38 Publications

Informations de base

Numéro de catalogue:
12835-1-AP

Taille:
150ul, Concentration: 500 µg/ml by Nanodrop and 307 µg/ml by Bradford method using BSA as the standard;

Hôte:
Lapin

Isotype:
IgG

Immunogen Catalog Number:
AG3581

Numéro d'acquisition GenBank:
BC038297

Identification du gène (NCBI):
55818

Nom complet:
lysine (K)-specific demethylase 3A

MW calculé
150 kDa

MW observés:
150 kDa

Méthode de purification:
Purification par affinité contre l'antigène

Dilutions recommandées:
WB 1:1000-1:4000
IP 0.5-4.0 ug for IP and 1:500-1:2000 for WB
IHC 1:20-1:200
IF 1:50-1:500

Applications

Applications testées:
IF, IHC, IP, WB, ELISA

Demandes citées:
ChIP, CoIP, IF, IHC, IP, WB

Spécificité de l'espèce:
Humain

Espèces citées:
Humain, souris

Remarque-IHC: il est suggéré de démasquer l'antigène avec un tampon de TE buffer pH 9,0; (*) A défaut, 'le démasquage de l'antigène peut être 'effectué avec un tampon citrate pH 6,0.

Contrôles positifs:

WB : cellules HeLa, cellules MCF-7

IP : cellules HeLa,

IHC : tissu de tumeur ovarienne humain, tissu ovarien humain, tissu rénal humain

IF : cellules HepG2,

Informations générales

KDM3A, also name as JMJD1A, JHDM2A, JMJD1, JMJD1A, KIAA0742 and TSGA, belongs to the JHDM2 histone demethylase family. It is a histone demethylase that specifically demethylates 'Lys-9' of histone H3, thereby playing a central role in histone code. It is involved in spermatogenesis by regulating expression of target genes such as PRM1 and TMP1 which are required for packaging and condensation of sperm chromatin. It is involved in obesity resistance through regulation of metabolic genes such as PPARA and UCP1. (PubMed:16603237), JMJD1A is a useful biomarker for hypoxic tumor cells and a prognostic marker that could be a promising therapeutic target against CRC. (PMID:20823141) This antibody recognizes the N-term of KDM3A(JMJD1A).

Publications notables

Autrice	Pubmed ID	Journal	Application
Rui-Ri Jin	36173030	Histol Histopathol	WB
Min Zhao	34479471	Cell Mol Biol Lett	WB
Biao Huang	31704649	iScience	WB

Stockage

Stockage:

Stocker à -20°C. Stable pendant un an après l'expédition.

Tampon de stockage:

PBS avec azoture de sodium à 0,02 % et glycérol à 50 % pH 7,3

L'aliquotage n'est pas nécessaire pour le stockage à -20C

*** Les 20ul contiennent 0,1% de BSA.

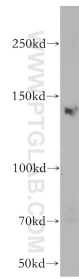
For technical support and original validation data for this product please contact:

T: 1 (888) 4PTGLAB (1-888-478-4522) (toll free in USA), or 1(312) 455-8498 (outside USA)

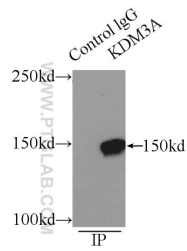
E: proteintech@ptglab.com
W: ptglab.com

This product is exclusively available under Proteintech Group brand and is not available to purchase from any other manufacturer.

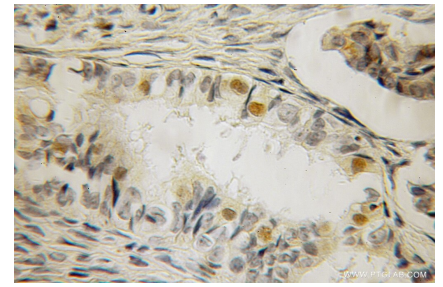
Données de validation sélectionnées



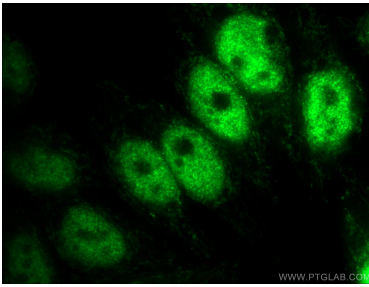
HeLa cells were subjected to SDS PAGE followed by western blot with 12835-1-AP (KDM3A, JMJD1A antibody) at dilution of 1:2000 incubated at room temperature for 1.5 hours.



IP Result of anti-KDM3A, JMJD1A (IP:12835-1-AP, 5ug; Detection:12835-1-AP 1:1000) with HeLa cells lysate 2500ug.



Immunohistochemical analysis of paraffin-embedded human ovary tumor using 12835-1-AP (KDM3A, JMJD1A antibody) at dilution of 1:100 (under 10x lens).



Immunofluorescent analysis of (4% PFA) fixed HepG2 cells using 12835-1-AP (KDM3A, JMJD1A antibody) at dilution of 1:50 and Alexa Fluor 488-conjugated AffiniPure Goat Anti-Rabbit IgG(H+L).