

À des fins de recherche uniquement

# Anticorps Polyclonal de lapin anti-SMARCD3



Numéro de catalogue: 12838-1-AP

4 Publications

## Informations de base

Numéro de catalogue:  
12838-1-AP

Taille:  
150ul, Concentration: 650 µg/ml by Nanodrop and 367 µg/ml by Bradford method using BSA as the standard;

Hôte:  
Lapin

Isotype:  
IgG

Immunogen Catalog Number:  
AG3896

Numéro d'acquisition GenBank:  
BC002628

Identification du gène (NCBI):  
6604

Nom complet:  
SWI/SNF related, matrix associated, actin dependent regulator of chromatin, subfamily d, member 3

MW calculé  
54 kDa

MW observés:  
54 kDa

Méthode de purification:  
Purification par affinité contre l'antigène

Dilutions recommandées:  
WB 1:500-1:3000  
IHC 1:200-1:800  
IF 1:50-1:500

## Applications

Applications testées:  
IF, IHC, WB, ELISA

Demandes citées:  
WB

Spécificité de l'espèce:  
Humain, rat, souris

Espèces citées:  
Humain, souris

**Remarque-IHC: il est suggéré de démasquer l'antigène avec un tampon de TE buffer pH 9,0; (\*) À défaut, 'le démasquage de l'antigène peut être 'effectué avec un tampon citrate pH 6,0.**

Contrôles positifs:

WB : cellules C6, cellules BxPC-3, cellules HeLa

IHC : tissu de cancer du pancréas humain,

IF : tissu cardiaque humain, tissu pancréatique de souris

## Informations générales

SMARCD3 is a component of the SWI/SNF (mating type switching/sucrose non-fermenting) chromatin remodeling complex, which evolutionarily conserved from yeast to human, and all complexes contain a core set of conserved components, including BRG1/Brm-associated factors (BAFs) and a DNA-dependent SWI2/SNF2-like ATPase, which enables chromatin remodeling. SMARCD3 isoforms bind to several nuclear receptors and transcription factors of various families. SMARCD3 proteins interact in a ligand-independent manner with peroxisome proliferator-activated receptor gamma and enhance its transcriptional activity.

## Publications notables

Autrice	Pubmed ID	Journal	Application
Wei Zhuo	35597784	Cell Discov	WB
D'Aniello Cristina C	23787002	Cardiovasc Res	WB
Ying Chen	34999540	Transl Oncol	WB

## Stockage

Stockage:

Stocker à -20°C. Stable pendant un an après l'expédition.

Tampon de stockage:

PBS avec azoture de sodium à 0,02 % et glycérol à 50 % pH 7,3

L'aliquotage n'est pas nécessaire pour le stockage à -20C

\*\*\* Les 20ul contiennent 0,1% de BSA.

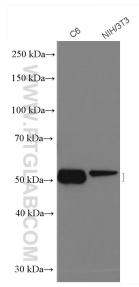
For technical support and original validation data for this product please contact:

T: 1 (888) 4PTGLAB (1-888-478-4522) (toll free in USA), or 1(312) 455-8498 (outside USA)

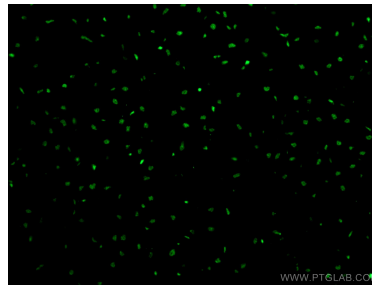
E: proteintech@ptglab.com  
W: ptglab.com

This product is exclusively available under Proteintech Group brand and is not available to purchase from any other manufacturer.

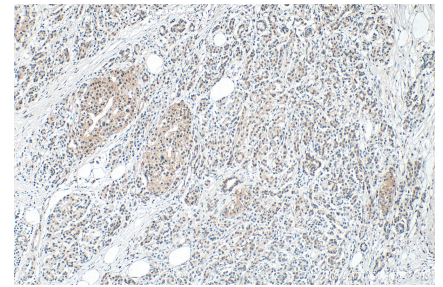
## Données de validation sélectionnées



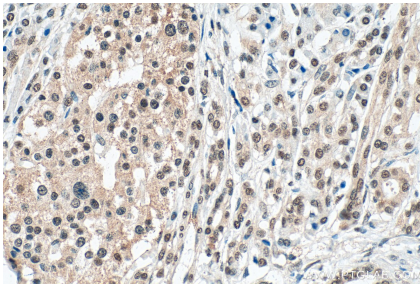
C6 and NIH3T3 cells were subjected to SDS PAGE followed by western blot with 12838-1-AP (SMARCD3 antibody) at dilution of 1:1500 incubated at room temperature for 1.5 hours.



Immunofluorescent analysis of (4% PFA) fixed human heart tissue using 12838-1-AP (SMARCD3 antibody) at dilution of 1:100 and CoraLite488-Conjugated AffiniPure Goat Anti-Rabbit IgG(H+L).



Immunohistochemical analysis of paraffin-embedded human pancreas cancer tissue slide using 12838-1-AP (SMARCD3 antibody) at dilution of 1:400 (under 10x lens). Heat mediated antigen retrieval with Tris-EDTA buffer (pH 9.0).



Immunohistochemical analysis of paraffin-embedded human pancreas cancer tissue slide using 12838-1-AP (SMARCD3 antibody) at dilution of 1:400 (under 40x lens). Heat mediated antigen retrieval with Tris-EDTA buffer (pH 9.0).