

À des fins de recherche uniquement

Anticorps Polyclonal de lapin anti-CENPH



Numéro de catalogue: 12841-1-AP

2 Publications

Informations de base

Numéro de catalogue: 12841-1-AP	Numéro d'acquisition GenBank: BC015355	Méthode de purification: Purification par affinité contre l'antigène
Taille: 150ul, Concentration: 1000 µg/ml by Nanodrop and 453 µg/ml by Bradford method using BSA as the standard;	Identification du gène (NCBI): 64946	Dilutions recommandées: WB 1:1000-1:8000
Hôte: Lapin	Nom complet: centromere protein H	
Isotype: IgG	MW calculé: 247 aa, 28 kDa	
Immunogen Catalog Number: AG3836	MW observés: 28 kDa	

Applications

Applications testées: WB, ELISA	Contrôles positifs: WB : cellules A549, cellules HeLa, cellules NIH/3T3
Demandes citées: WB	
Spécificité de l'espèce: Humain, souris	
Espèces citées: Humain, souris	

Informations générales

Centromere protein H (CENPH) is a component of the active centromere complex that associates with centromeric DNA and binds spindle microtubules to the chromosomes, which is required for chromosome congression and efficiently align the chromosomes on a metaphase plate. CENPH plays a key role in assembly of kinetochore proteins, mitotic progression and chromosome segregation that may cause misaligned chromosomes and multipolar spindles. Besides, CENPH may be associated with the modulation of the cell cycle through an interaction with CENPC. It has been shown that the expression of CENPH is related to clinical application including colorectal cancer, gastric cancer, renal cell carcinoma, hepatocellular carcinoma and other poor prognosis in various solid tumors. (PMID: 26378239, 27993978, 28819418)

Publications notables

Autrice	Pubmed ID	Journal	Application
Qiao Li	37293159	Am J Cancer Res	WB
Hiba K Omairi	37186014	Neuro Oncol	WB

Stockage

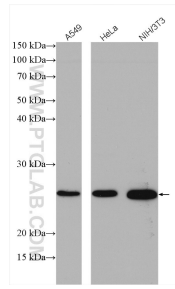
Stockage:
Stocker à -20°C. Stable pendant un an après l'expédition.
Tampon de stockage:
PBS avec azoture de sodium à 0,02 % et glycérol à 50 % pH 7,3
L'aliquotage n'est pas nécessaire pour le stockage à -20C

*** Les 20ul contiennent 0,1% de BSA.

For technical support and original validation data for this product please contact:
T: 1 (888) 4PTGLAB (1-888-478-4522) (toll free in USA), or 1(312) 455-8498 (outside USA)
E: proteintech@ptglab.com
W: ptglab.com

This product is exclusively available under Proteintech Group brand and is not available to purchase from any other manufacturer.

Données de validation sélectionnées



Various lysates were subjected to SDS PAGE followed by western blot with 12841-1-AP (CENPH antibody) at dilution of 1:5000 incubated at room temperature for 1.5 hours.