

À des fins de recherche uniquement

Anticorps Polyclonal de lapin anti-CCL3L1



Numéro de catalogue: 12859-1-AP

Informations de base

Numéro de catalogue: 12859-1-AP	Numéro d'acquisition GenBank: BC027888	Méthode de purification: Purification par affinité contre l'antigène
Taille: 150ul , Concentration: 550 µg/ml by Nanodrop;	Identification du gène (NCBI): 6349	Dilutions recommandées: WB 1:500-1:2000
Hôte: Lapin	Nom complet: chemokine (C-C motif) ligand 3-like 1	
Isotype: IgG	MW calculé: 10 kDa	
Immunogen Catalog Number: AG3891	MW observés: 10 kDa	

Applications

Applications testées: WB, ELISA	Contrôles positifs: WB : PMA, LPS and Brefeldin A treated THP-1 cells,
Spécificité de l'espèce: Humain	

Informations générales

CCL3L1 is one of several cytokine genes that are clustered on the q-arm of chromosome 17. Cytokines are a family of secreted proteins that function in inflammatory and immunoregulatory processes. The protein encoded by this gene binds to several chemokine receptors, including chemokine binding protein 2 and chemokine (C-C motif) receptor 5 (CCR5). CCR5 is a co-receptor for HIV, and binding of this protein to CCR5 inhibits HIV entry. The copy number of this gene varies among individuals, where most individuals have one to six copies, and a minority of individuals have zero or more than six copies. There are conflicting reports about copy number variation of this gene and its correlation to disease susceptibility.

Stockage

Stockage:
Stocker à -20°C. Stable pendant un an après l'expédition.
Tampon de stockage:
PBS avec azoture de sodium à 0,02 % et glycérol à 50 % pH 7,3
L'aliquotage n'est pas nécessaire pour le stockage à -20C

***** Les 20ul contiennent 0,1% de BSA.**

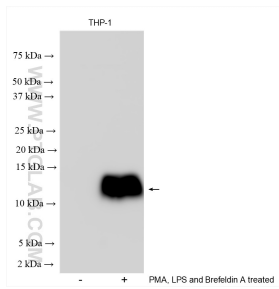
For technical support and original validation data for this product please contact:

T: 1 (888) 4PTGLAB (1-888-478-4522) (toll free in USA), or 1(312) 455-8498 (outside USA)

E: proteintech@ptglab.com
W: ptglab.com

This product is exclusively available under Proteintech Group brand and is not available to purchase from any other manufacturer.

Données de validation sélectionnées



PMA, LPS and Brefeldin A treated THP-1 cells were subjected to SDS PAGE followed by western blot with 12859-1-AP (CCL3L1 antibody) at dilution of 1:1000 incubated at room temperature for 1.5 hours.