

À des fins de recherche uniquement

Anticorps Polyclonal de lapin anti-SULT2B1



Numéro de catalogue: 12879-1-AP

2 Publications

Informations de base

Numéro de catalogue:
12879-1-AP

Taille:
150ul, Concentration: 220 µg/ml by
Bradford method using BSA as the
standard;

Hôte:
Lapin

Isotype:
IgG

Immunogen Catalog Number:
AG3838

Numéro d'acquisition GenBank:
BC034694

Identification du gène (NCBI):
6820

Nom complet:
sulfotransferase family, cytosolic, 2B,
member 1

MW calculé
365 aa, 41 kDa

MW observés:
39 kDa

Méthode de purification:
Purification par affinité contre
l'antigène

Dilutions recommandées:
WB 1:500-1:3000
IP 0.5-4.0 ug for IP and 1:200-1:1000
for WB
IHC 1:20-1:200

Applications

Applications testées:
IHC, IP, WB, ELISA

Demandes citées:
WB

Spécificité de l'espèce:
Humain, rat, souris

Espèces citées:
Humain, souris

**Remarque-IHC: il est suggéré de démasquer
l'antigène avec un tampon de TE buffer pH
9,0; (*) A défaut, 'le démasquage de
l'antigène peut être 'effectué avec un
tampon citrate pH 6,0.**

Contrôles positifs:

WB : tissu cutané de souris,

IP : tissu cutané de souris,

IHC : tissu de cancer de la prostate humain, tissu
placentaire humain

Informations générales

SULT2B1 is a member of hydroxysteroid sulfotransferase (SULT) family that catalyzes sulfonation of hormones and other molecules. SULT2B1 encodes two isoforms, SULT2B1a and SULT2B1b, that differ only at their amino termini but have distinct biochemical properties as well as tissue distribution. The human fetal brain appears to only express the SULT2B1a isoform, while SULT2B1b is the predominant hydroxysteroid sulfotransferase expressed in human skin. Northern blot analysis revealed SULT2B1a has a limited tissue distribution in liver, adrenal and stomach, whereas SULT2B1b can be detected in a variety of hormone-responsive tissues including placenta, ovary, uterus, and prostate. This antibody recognizes both of SULT2B1a and SULT2B1b.

Publications notables

Autrice	Pubmed ID	Journal	Application
Ying Liu	30309895	J Lipid Res	WB
Takuyu Hashiguchi	29626075	Drug Metab Dispos	WB

Stockage

Stockage:

Stocker à -20°C. Stable pendant un an après l'expédition.

Tampon de stockage:

PBS avec azoture de sodium à 0,02 % et glycérol à 50 % pH 7,3

L'aliquotage n'est pas nécessaire pour le stockage à -20C

*** Les 20ul contiennent 0,1% de BSA.

For technical support and original validation data for this product please contact:

T: 1 (888) 4PTGLAB (1-888-478-4522) (toll free
in USA), or 1(312) 455-8498 (outside USA)

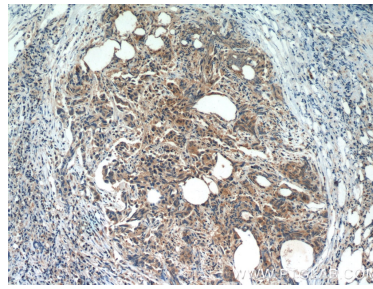
E: proteintech@ptglab.com
W: ptglab.com

This product is exclusively available under Proteintech Group brand and is not available to purchase from any other manufacturer.

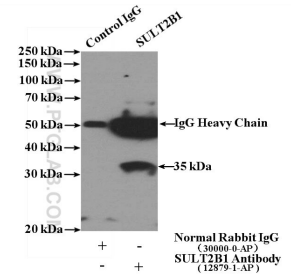
Données de validation sélectionnées



mouse skin tissue were subjected to SDS PAGE followed by western blot with 12879-1-AP (SULT2B1 antibody) at dilution of 1:400 incubated at room temperature for 1.5 hours.



Immunohistochemical analysis of paraffin-embedded human prostate cancer slide using 12879-1-AP (SULT2B1 Antibody) at dilution of 1:50. Heat mediated antigen retrieved with Citric acid buffer, pH6.0.



IP Result of anti-SULT2B1 (IP:12879-1-AP, 4ug; Detection:12879-1-AP 1:400) with mouse skin tissue lysate 3200ug.