

À des fins de recherche uniquement

Anticorps Polyclonal de lapin anti-GJB3



Numéro de catalogue: 12880-1-AP

Phare

10 Publications

Informations de base

Numéro de catalogue:
12880-1-AP

Taille:
150ul, Concentration: 240 µg/ml by Nanodrop and 240 µg/ml by Bradford method using BSA as the standard;

Hôte:
Lapin

Isotype:
IgG

Immunogen Catalog Number:
AG3839

Numéro d'acquisition GenBank:
BC012918

Identification du gène (NCBI):
2707

Nom complet:
gap junction protein, beta 3, 31kDa

MW calculé
270 aa, 31 kDa

MW observés:
31 kDa

Méthode de purification:
Purification par affinité contre l'antigène

Dilutions recommandées:
WB 1:500-1:2000
IP 0.5-4.0 ug for IP and 1:500-1:1000 for WB
IHC 1:20-1:200
IF 1:50-1:500

Applications

Applications testées:
IF, IHC, IP, WB, ELISA

Demandes citées:
IF, IHC, WB

Spécificité de l'espèce:
Humain, rat, souris

Espèces citées:
Humain, rat, souris

Remarque-IHC: il est suggéré de démasquer l'antigène avec un tampon de TE buffer pH 9,0; (*) A défaut, 'le démasquage de l'antigène peut être 'effectué avec un tampon citrate pH 6,0.

Contrôles positifs:

WB : tissu ovarien de souris, cellules HeLa

IP : cellules HeLa,

IHC : tissu de col de l'utérus humain, tissu de cancer de la peau humaine, tissu de tumeur ovarienne humaine

IF : cellules HeLa,

Informations générales

GJB3, also known as Connexin-31 (Cx31), belongs to the connexin family. Connexins are membrane-spanning proteins that assemble to form gap junction channels that facilitate the transfer of ions and small molecules between cells. Mutations in the gene of GJB3 have been described in patients with dominant and recessive hearing impairment and in patients with erythrokeratoderma variabilis (EKV).

Publications notables

Autrice	Pubmed ID	Journal	Application
Stefania Monterisi	36107487	Elife	WB
Girieca Lorusso	36070364	Sci Transl Med	WB,IHC
Yanmiao Huo	36341459	Front Immunol	WB,IHC

Stockage

Stockage:

Stocker à -20°C. Stable pendant un an après l'expédition.

Tampon de stockage:

PBS avec azoture de sodium à 0,02 % et glycérol à 50 % pH 7,3

L'aliquotage n'est pas nécessaire pour le stockage à -20C

*** Les 20ul contiennent 0,1% de BSA.

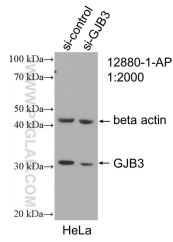
For technical support and original validation data for this product please contact:

T: 1 (888) 4PTGLAB (1-888-478-4522) (toll free in USA), or 1(312) 455-8498 (outside USA)

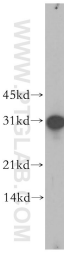
E: proteintech@ptglab.com
W: ptglab.com

This product is exclusively available under Proteintech Group brand and is not available to purchase from any other manufacturer.

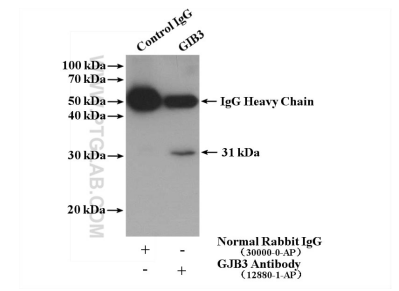
Données de validation sélectionnées



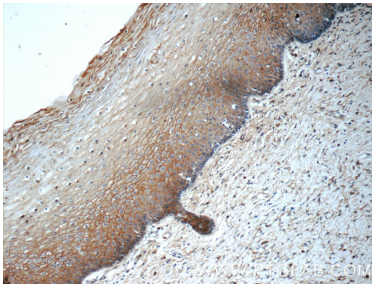
WB result of GJB3 antibody (12880-1-AP; 1:2000; incubated at room temperature for 1.5 hours) with sh-Control and sh-GJB3 transfected HeLa cells.



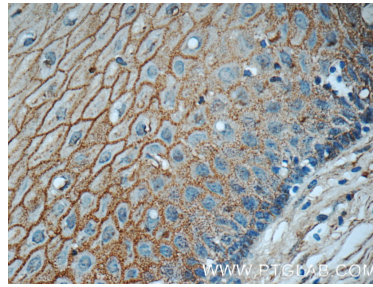
mouse ovary tissue were subjected to SDS PAGE followed by western blot with 12880-1-AP (GJB3 antibody) at dilution of 1:500 incubated at room temperature for 1.5 hours.



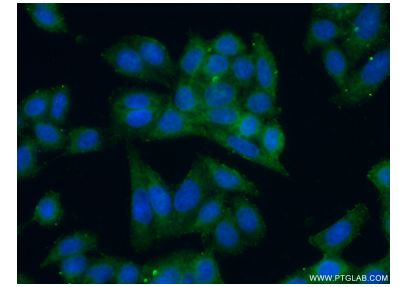
IP result of anti-GJB3 (IP:12880-1-AP, 4ug; Detection:12880-1-AP 1:500) with HeLa cells lysate 2600 ug.



Immunohistochemical analysis of paraffin-embedded human cervix tissue slide using 12880-1-AP (GJB3 Antibody) at dilution of 1:50 (under 10x lens).



Immunohistochemical analysis of paraffin-embedded human cervix tissue slide using 12880-1-AP (GJB3 Antibody) at dilution of 1:50 (under 40x lens).



Immunofluorescent analysis of (-20°C Ethanol) fixed HeLa cells using 12880-1-AP (GJB3 antibody) at dilution of 1:50 and Alexa Fluor 488-conjugated AffiniPure Goat Anti-Rabbit IgG(H+L).