

À des fins de recherche uniquement

Anticorps Polyclonal de lapin anti-SH2D3C



Numéro de catalogue: 12882-1-AP

1 Publications

Informations de base

Numéro de catalogue:

12882-1-AP

Taille:

150ul, Concentration: 900 µg/ml by Nanodrop and 333 µg/ml by Bradford method using BSA as the standard;

Hôte:

Lapin

Isotype:

IgG

Immunogen Catalog Number:

AG3887

Numéro d'acquisition GenBank:

BC027962

Identification du gène (NCBI):

10044

Nom complet:

SH2 domain containing 3C

MW calculé

94 kDa, 86 kDa, 77 kDa

MW observés:

77 kDa

Méthode de purification:

Purification par affinité contre l'antigène

Dilutions recommandées:

WB 1:500-1:2400

IP 0.5-4.0 ug for IP and 1:500-1:1000 for WB

IHC 1:20-1:200

Applications

Applications testées:

IHC, IP, WB, ELISA

Demandes citées:

IP, WB

Spécificité de l'espèce:

Humain, rat, souris

Espèces citées:

rat

Remarque-IHC: il est suggéré de démasquer l'antigène avec un tampon de TE buffer pH 9,0; (*) A défaut, le démasquage de l'antigène peut être effectué avec un tampon citrate pH 6,0.

Contrôles positifs:

WB : cellules HEK-293, tissu cérébral humain, tissu placentaire humain

IP : tissu cérébral de souris,

IHC : tissu de cancer du sein humain,

Informations générales

SH2 domain-containing protein 3C (SH2D3C, or NSP3) gene encodes an adaptor protein and member of a cytoplasmic protein family involved in cell migration. The encoded protein was identified as an Eph receptor-binding protein which may be a positive regulator of TCR signaling (PMID: 10542222). SH2D3C is an adaptor protein that has been implicated in T cell activation and shown to associate with different components of the integrin signaling pathway ex vivo, moreover, its primary in vivo role of Sh2d3c in regulating B cell development and function has also been demonstrated (PMID: 20505138). SH2D3C has 6 isoforms with MW 94, 86, 77 and 55 kDa (refer to UniProt).

Publications notables

Autrice	Pubmed ID	Journal	Application
Fujiya Gomi	29966723	Neuroscience	WB,IP

Stockage

Stockage:

Stocker à -20°C. Stable pendant un an après l'expédition.

Tampon de stockage:

PBS avec azoture de sodium à 0,02 % et glycérol à 50 % pH 7,3

L'aliquotage n'est pas nécessaire pour le stockage à -20C

*** Les 20ul contiennent 0,1% de BSA.

For technical support and original validation data for this product please contact:

T: 1 (888) 4PTGLAB (1-888-478-4522) (toll free in USA), or 1(312) 455-8498 (outside USA)

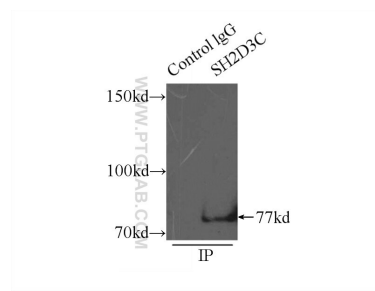
E: proteintech@ptglab.com
W: ptglab.com

This product is exclusively available under Proteintech Group brand and is not available to purchase from any other manufacturer.

Données de validation sélectionnées

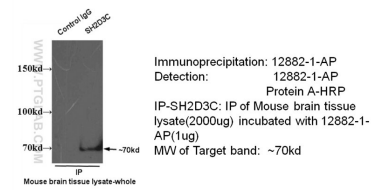


HEK-293 cells were subjected to SDS PAGE followed by western blot with 12882-1-AP (SH2D3C antibody) at dilution of 1:300 incubated at room temperature for 1.5 hours.

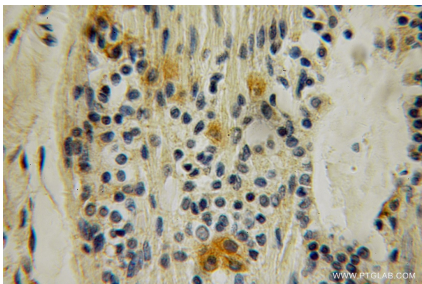


IP Result of anti-SH2D3C (IP:12882-1-AP, 3ug; Detection:12882-1-AP 1:500) with mouse brain tissue lysate 6000ug.

IP & WB of 12882-1-AP with Mouse brain tissue



IP result of SH2D3C antibody (12882-1-AP for IP and Detection) with mouse brain tissue lysate.



Immunohistochemical analysis of paraffin-embedded human breast cancer using 12882-1-AP (SH2D3C antibody) at dilution of 1:100 (under 10x lens).