

À des fins de recherche uniquement

# Anticorps Polyclonal de lapin anti-TDP-43 (C-terminal)



Numéro de catalogue: 12892-1-AP

Phare

205 Publications

## Informations de base

Numéro de catalogue:  
12892-1-AP

Taille:  
150ul, Concentration: 650 µg/ml by  
Nanodrop;

Hôte:  
Lapin

Isotype:  
IgG

Numéro d'acquisition GenBank:  
BC001487

Identification du gène (NCBI):  
23435

Nom complet:  
TAR DNA binding protein

MW calculé

43 kDa

MW observés:

43-45 kDa, 35 kDa

Méthode de purification:

Purification par affinité contre  
l'antigène

Dilutions recommandées:

WB 1:500-1:5000

IP 0.5-4.0 µg for IP and 1:500-1:2000  
for WB

IHC 1:500-1:2000

IF 1:2000-1:8000

## Applications

Applications testées:

IF, IHC, IP, WB, ELISA

Demandes citées:

ChIP, CoIP, IF, IHC, IP, WB

Spécificité de l'espèce:

Humain, rat, souris

Espèces citées:

Drosophile, Humain, poisson-zèbre, poulet, rat, singe,  
souris

**Remarque-IHC: il est suggéré de démasquer  
l'antigène avec un tampon de TE buffer pH  
9,0; (\*) À défaut, 'le démasquage de  
l'antigène peut être 'effectué avec un  
tampon citrate pH 6,0.**

Contrôles positifs:

WB : cellules A549, cellules C6, cellules HeLa, tissu  
cérébral de souris

IP : cellules HeLa, tissu cérébral de souris

IHC : tissu cérébral de souris, tissu de gliome humain

IF : cellules HeLa, cellules Neuro-2a

## Informations générales

Transactivation response (TAR), DNA-binding protein of 43 kDa (also known as TARDBP or TDP-43), was first isolated as a transcriptional inactivator binding to the TAR DNA element of the HIV-1 virus. Neumann et al. (2006) found that a hyperphosphorylated, ubiquitinated, and cleaved form of TARDBP, known as pathologic TDP-43, is the major component of the tau-negative and ubiquitin-positive inclusions that characterize amyotrophic lateral sclerosis (ALS) and the most common pathological subtype of frontotemporal lobar degeneration (FTLD-U). 12892-1-AP is a rabbit polyclonal antibody raised against the C-terminal amino acids of human TDP-43. This antibody recognizes the cleavage product of 20-30 kDa in addition to the native and phosphorylated forms of TDP-43. Immunohistochemical analyses of TDP-43 using this antibody detect both normal diffuse nuclear staining and insoluble inclusions in pathologic tissues. Various forms of TDP-43 exist, including 18-35 kDa of cleaved C-terminal fragments, 45-50 kDa phosphoprotein, 55 kDa glycosylated form, 75 kDa hyperphosphorylated form, and 90-300 kDa cross-linked form. (17023659,19823856,21666678,22193176)

Recently TDP-43 has been reported to be overexpressed in triple negative breast cancer (TNBC) and it may be a potential target for TNBC diagnosis and drug design. (29581274)

## Publications notables

Autrice	Pubmed ID	Journal	Application
Helena Gossye	36171642	Brain	IHC
Y Liu	25270903	Neuroscience	
Wenrui Huang	34580300	Nat Commun	IHC

## Stockage

Stockage:

Stocker à -20°C. Stable pendant un an après l'expédition.

Tampon de stockage:

PBS avec azoture de sodium à 0,02 % et glycérol à 50 % pH 7,3

L'aliquotage n'est pas nécessaire pour le stockage à -20C

\*\*\* Les 20ul contiennent 0,1% de BSA.

For technical support and original validation data for this product please contact:

T: 1 (888) 4PTGLAB (1-888-478-4522) (toll free  
in USA), or 1(312) 455-8498 (outside USA)

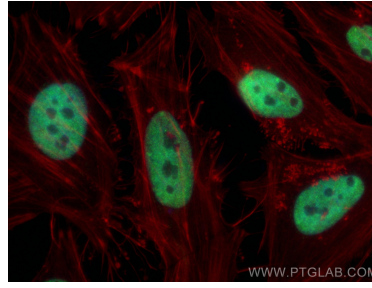
E: proteintech@ptglab.com  
W: ptglab.com

This product is exclusively available under Proteintech Group brand and is not available to purchase from any other manufacturer.

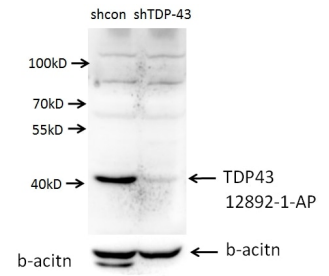
## Données de validation sélectionnées



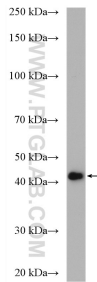
Immunohistochemical analysis of paraffin-embedded mouse brain tissue slide using 12892-1-AP (TDP-43 (C-terminal) antibody at dilution of 1:1000 (under 10x lens). Heat mediated antigen retrieval with Tris-EDTA buffer (pH 9.0).



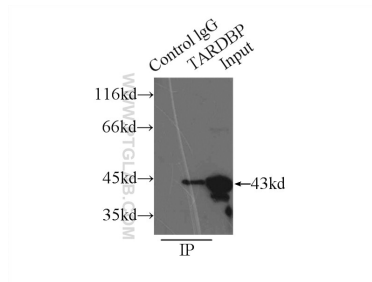
Immunofluorescent analysis of (4% PFA) fixed HeLa cells using TDP-43 (C-terminal) antibody (12892-1-AP) at dilution of 1:4000 and CoraLite®488-Conjugated AffiniPure Goat Anti-Rabbit IgG(H+L), CL594-Phalloidin (red).



A549 cells (shcontrol and shRNA of TDP43) were subjected to SDS PAGE followed by western blot with 12892-1-AP (TDP43 antibody) at dilution of 1:1000.



HeLa cells were subjected to SDS PAGE followed by western blot with 12892-1-AP (TDP-43 (C-terminal) antibody) at dilution of 1:6000 incubated at room temperature for 1.5 hours.



IP Result of anti-TARDBP (IP:12892-1-AP, 3ug; Detection:12892-1-AP 1:1000) with HeLa cells lysate 3000ug.