

À des fins de recherche uniquement

Anticorps Polyclonal de lapin anti-CUL1



Numéro de catalogue: 12895-1-AP

Phare

13 Publications

Informations de base

Numéro de catalogue:
12895-1-AP

Taille:
150ul, Concentration: 500 µg/ml by Nanodrop and 267 µg/ml by Bradford method using BSA as the standard;

Hôte:
Lapin

Isotype:
IgG

Immunogen Catalog Number:
AG3585

Numéro d'acquisition GenBank:
BC034318

Identification du gène (NCBI):
8454

Nom complet:
cullin 1

MW calculé
90 kDa

MW observés:
80-90 kDa

Méthode de purification:
Purification par affinité contre l'antigène

Dilutions recommandées:
WB 1:5000-1:50000
IP 0.5-4.0 ug for IP and 1:1000-1:4000 for WB
IHC 1:250-1:1000

Applications

Applications testées:
FC, IHC, IP, WB, ELISA

Demandes citées:
IP, WB

Spécificité de l'espèce:
Humain, souris

Espèces citées:
Humain, souris

Remarque-IHC: il est suggéré de démasquer l'antigène avec un tampon de TE buffer pH 9,0; (*) A défaut, 'le démasquage de l'antigène peut être effectué avec un tampon citrate pH 6,0.

Contrôles positifs:

WB : cellules A549, cellules BxPC-3, cellules K-562

IP : cellules K-562, cellules HeLa

IHC : tissu de cancer du poumon humain,

Informations générales

The cullin family proteins are scaffold proteins for the Ring finger type E3 ligases. Humans express seven cullin proteins: CUL1-3, CUL4A, CUL4B, CUL5, and CUL7. Each cullin protein can form an E3 ligase similar to the prototype Ring-type E3 ligase Skp1-CUL1-F-box complex. The Cullin-RING-finger type E3 ligases are important regulators in early embryonic development, as highlighted by genetic studies demonstrating that knock-out of CUL1, CUL3, or CUL4A in mice results in early embryonic lethality.

Publications notables

Autrice	Pubmed ID	Journal	Application
Tiantian Xu	36253371	Signal Transduct Target Ther	WB
Lu Yin	36240645	Neoplasia	WB
Tomoaki Nagai	30404837	J Cell Sci	WB

Stockage

Stockage:

Stocker à -20°C. Stable pendant un an après l'expédition.

Tampon de stockage:

PBS avec azoture de sodium à 0,02 % et glycérol à 50 % pH 7,3

L'aliquotage n'est pas nécessaire pour le stockage à -20C

*** Les 20ul contiennent 0,1% de BSA.

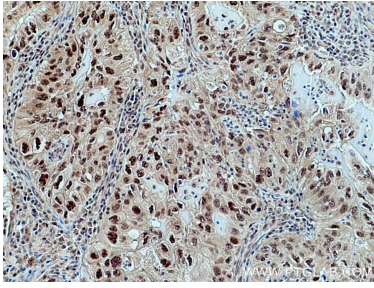
For technical support and original validation data for this product please contact:

T: 1 (888) 4PTGLAB (1-888-478-4522) (toll free in USA), or 1(312) 455-8498 (outside USA)

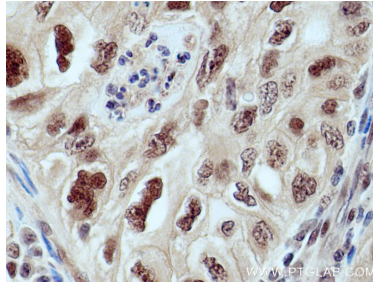
E: proteintech@ptglab.com
W: ptglab.com

This product is exclusively available under Proteintech Group brand and is not available to purchase from any other manufacturer.

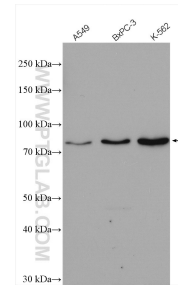
Données de validation sélectionnées



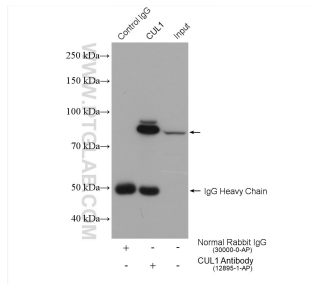
Immunohistochemical analysis of paraffin-embedded human lung cancer tissue slide using 12895-1-AP (CUL1 antibody) at dilution of 1:500 (under 10x lens). Heat mediated antigen retrieval with Tris-EDTA buffer (pH 9.0).



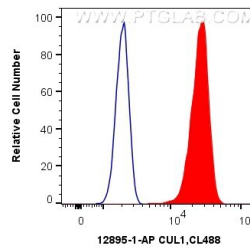
Immunohistochemical analysis of paraffin-embedded human lung cancer tissue slide using 12895-1-AP (CUL1 antibody) at dilution of 1:500 (under 40x lens). Heat mediated antigen retrieval with Tris-EDTA buffer (pH 9.0).



Various lysates were subjected to SDS PAGE followed by western blot with 12895-1-AP (CUL1 antibody) at dilution of 1:10000 incubated at room temperature for 1.5 hours.



IP result of anti-CUL1 (IP:12895-1-AP, 4ug; Detection:12895-1-AP 1:2000) with K-562 cells lysate 1760 ug.



1x10⁶ HeLa cells were intracellularly stained with 0.4 ug Anti-Human CUL1 (12895-1-AP) and CoraLite®488-Conjugated AffiniPure Goat Anti-Rabbit IgG(H+L) at dilution 1:1000 (red), or 0.4 ug Control Antibody. Cells were fixed and permeabilized with Transcription Factor Staining Buffer Kit (PF00011).