

À des fins de recherche uniquement

Anticorps Polyclonal de lapin anti-CYP2W1



Numéro de catalogue: 12904-1-AP

Phare

1 Publications

Informations de base

Numéro de catalogue:
12904-1-AP

Taille:
150ul , Concentration: 133 µg/ml by
Bradford method using BSA as the
standard;

Hôte:
Lapin

Isotype:
IgG

Immunogen Catalog Number:
AG3803

Numéro d'acquisition GenBank:
BC025761

Identification du gène (NCBI):
54905

Nom complet:
cytochrome P450, family 2, subfamily
W, polypeptide 1

MW calculé

54 kDa

MW observés:

45-54 kDa

Méthode de purification:
Purification par affinité contre
l'antigène

Dilutions recommandées:
WB 1:500-1:1000

Applications

Applications testées:
WB, ELISA

Demandes citées:
WB

Spécificité de l'espèce:
Humain, rat, souris

Espèces citées:
Humain

Contrôles positifs:

WB : cellules HepG2, cellules HEK-293

Informations générales

Cytochrome P450s have been proposed to be of importance both in carcinogenesis, by activating precarcinogens, and as determinants of cancer chemotherapy, where they participate in activation or inactivation of anti-cancer drugs. CYP2W1 is exclusively expressed in transformed tissue in the adult human, mainly in colon tumors. It is a potential drug target in cancer therapy. CYP2W1 has a molecular weight of 52-54 kDa, and 30/45 kDa of potential isoforms.

Publications notables

Autrice	Pubmed ID	Journal	Application
Hanna Szaefer	31561186	Pharmacol Rep	WB

Stockage

Stockage:
Stocker à -20°C. Stable pendant un an après l'expédition.

Tampon de stockage:
PBS avec azoture de sodium à 0,02 % et glycérol à 50 % pH 7,3
L'aliquotage n'est pas nécessaire pour le stockage à -20C

*** Les 20ul contiennent 0,1% de BSA.

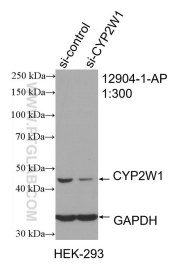
For technical support and original validation data for this product please contact:

T: 1 (888) 4PTGLAB (1-888-478-4522) (toll free
in USA), or 1(312) 455-8498 (outside USA)

E: proteintech@ptglab.com
W: ptglab.com

This product is exclusively available under Proteintech Group brand and is not available to purchase from any other manufacturer.

Données de validation sélectionnées



WB result of CYP2W1 antibody (12904-1-AP; 1:300; incubated at room temperature for 1.5 hours) with sh-Control and sh-CYP2W1 transfected HEK-293 cells.



HepG2 cells were subjected to SDS PAGE followed by western blot with 12904-1-AP (CYP2W1 antibody) at dilution of 1:400 incubated at room temperature for 1.5 hours.