

À des fins de recherche uniquement

Anticorps Polyclonal de lapin anti-TGM1



Numéro de catalogue: 12912-3-AP

20 Publications

Informations de base

Numéro de catalogue:
12912-3-AP

Taille:
150ul, Concentration: 500 µg/ml by
Nanodrop;

Hôte:
Lapin

Isotype:
IgG

Immunogen Catalog Number:
AG3905

Numéro d'acquisition GenBank:
BC034699

Identification du gène (NCBI):
7051

Nom complet:
transglutaminase 1 (K polypeptide
epidermal type I, protein-glutamine-
gamma-glutamyltransferase)

MW calculé
817 aa, 90 kDa
MW observés:
90 kDa

Méthode de purification:
Purification par affinité contre
l'antigène

Dilutions recommandées:
WB 1:1000-1:8000
IP 0.5-4.0 ug for IP and 1:500-1:2000
for WB
IHC 1:200-1:800

Applications

Applications testées:
IHC, IP, WB, ELISA

Demandes citées:
IF, IHC, WB

Spécificité de l'espèce:
Humain, souris

Espèces citées:
Humain, rat, souris

**Remarque-IHC: il est suggéré de démasquer
l'antigène avec un tampon de TE buffer pH
9,0; (*) A défaut, 'le démasquage de
l'antigène peut être 'effectué avec un
tampon citrate pH 6,0.**

Contrôles positifs:

WB : salive humain, tissu rénal de souris

IP : tissu rénal de souris,

IHC : tissu de cancer du col de l'utérus humain, tissu
cutané humain, tissu de col de l'utérus humain

Informations générales

Transglutaminase 1 is an epidermal enzyme that is expressed during the terminal differentiation of keratinized squamous epithelium to form cornified cell envelopes in differentiated keratinocytes. Mutation of TGM1 has been linked to various epidermal diseases. This antibody recognizes the endogenous 90 kDa TGM1 proteins.

Publications notables

Autrice	Pubmed ID	Journal	Application
Laurence Cantin-Warren	30223550	J Funct Biomater	IF
Jie Zhang	34646892	Burns Trauma	WB,IHC
Risa Ikutama	36455652	J Invest Dermatol	WB

Stockage

Stockage:

Stocker à -20°C. Stable pendant un an après l'expédition.

Tampon de stockage:

PBS avec azoture de sodium à 0,02 % et glycérol à 50 % pH 7,3

L'aliquotage n'est pas nécessaire pour le stockage à -20C

*** Les 20ul contiennent 0,1% de BSA.

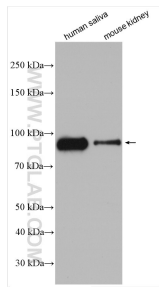
For technical support and original validation data for this product please contact:

T: 1 (888) 4PTGLAB (1-888-478-4522) (toll free
in USA), or 1(312) 455-8498 (outside USA)

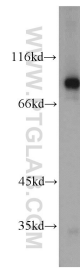
E: proteintech@ptglab.com
W: ptglab.com

This product is exclusively available under Proteintech Group brand and is not available to purchase from any other manufacturer.

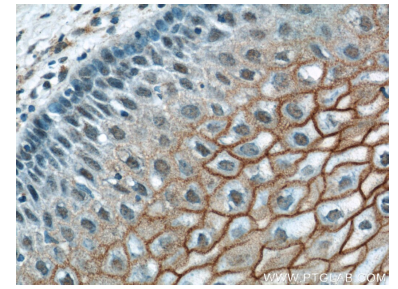
Données de validation sélectionnées



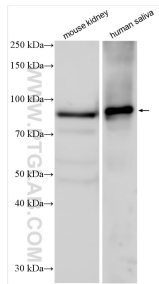
Various lysates were subjected to SDS PAGE followed by western blot with 12912-3-AP (TGM1 antibody) at dilution of 1:4000 incubated at room temperature for 1.5 hours.



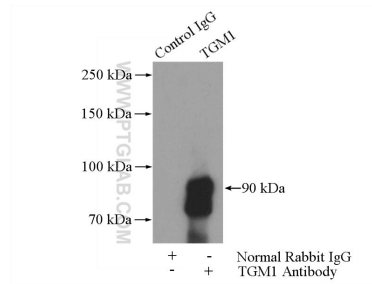
mouse kidney tissue were subjected to SDS PAGE followed by western blot with 12912-3-AP (TGM1 antibody) at dilution of 1:500 incubated at room temperature for 1.5 hours.



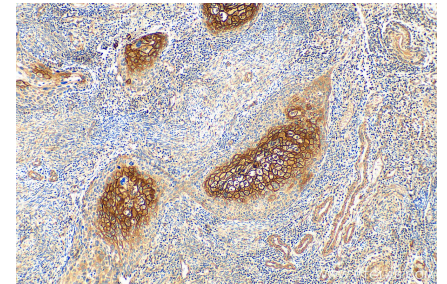
Immunohistochemical analysis of paraffin-embedded human cervix using 12912-3-AP (TGM1 antibody) at dilution of 1:200 (under 40x lens).



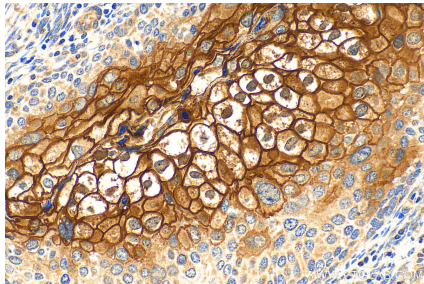
Various lysates were subjected to SDS PAGE followed by western blot with 12912-3-AP (TGM1 antibody) at dilution of 1:4000 incubated at room temperature for 1.5 hours.



IP Result of anti-TGM1 (IP:12912-3-AP, 4ug; Detection:12912-3-AP 1:1000) with mouse kidney tissue lysate 4000ug.



Immunohistochemical analysis of paraffin-embedded human cervical cancer tissue slide using 12912-3-AP (TGM1 antibody) at dilution of 1:400 (under 10x lens). Heat mediated antigen retrieval with Tris-EDTA buffer (pH 9.0).



Immunohistochemical analysis of paraffin-embedded human cervical cancer tissue slide using 12912-3-AP (TGM1 antibody) at dilution of 1:400 (under 40x lens). Heat mediated antigen retrieval with Tris-EDTA buffer (pH 9.0).