

À des fins de recherche uniquement

Anticorps Polyclonal de lapin anti-pan-PKC



Numéro de catalogue: 12919-1-AP

19 Publications

Informations de base

Numéro de catalogue:
12919-1-AP

Taille:
150ul, Concentration: 500 µg/ml by Nanodrop and 267 µg/ml by Bradford method using BSA as the standard;

Hôte:
Lapin

Isotype:
IgG

Immunogen Catalog Number:
AG3591

Numéro d'acquisition GenBank:
BC036472

Identification du gène (NCBI):
5579

Nom complet:
protein kinase C, beta

MW calculé
673 aa, 77 kDa

MW observés:
77 kDa

Méthode de purification:
Purification par affinité contre l'antigène

Dilutions recommandées:
WB 1:1000-1:8000
IP 0.5-4.0 ug for IP and 1:500-1:2000 for WB
IHC 1:50-1:500

Applications

Applications testées:
FC (Intra), IHC, IP, WB, ELISA

Demandes citées:
IHC, WB

Spécificité de l'espèce:
Humain, rat, souris

Espèces citées:
Humain, rat, souris

Remarque-IHC: il est suggéré de démasquer l'antigène avec un tampon de TE buffer pH 9.0; (*) A défaut, 'le démasquage de l'antigène peut être effectué avec un tampon citrate pH 6,0.

Contrôles positifs:

WB : cellules K-562, plaquettes de sang périphérique humain, tissu cérébral de rat, tissu cérébral de souris, tissu de thymus de souris

IP : tissu cérébral de souris,

IHC : tissu de cancer du sein humain,

Informations générales

Protein kinase C (PKC) is a family of serine- and threonine-specific protein kinases that can be activated by calcium and second messenger diacylglycerol. Protein kinase Cs (PKCs) are signaling molecules that play key roles in many cellular processes, including secretion, gene expression, proliferation, and muscle contraction. The PKC family is broadly divided into three subgroups: classical, novel, and atypical PKCs. These subgroups differ in both protein sequences and mechanistic requirements for catalytic activity. PKC beta is one of the PKC family members. PKC beta has been reported to be involved in many different cellular functions, such as B cell activation, apoptosis induction, endothelial cell proliferation, and intestinal sugar absorption. Studies in mice also suggest that this kinase may also regulate neuronal functions and correlate fear-induced conflict behavior after stress. This antibody can recognize PKC beta, PKC alpha, PKC gamma, PKC epsilon and PKC delta.

Publications notables

Autrice	Pubmed ID	Journal	Application
Shuyan Liu	36158087	Heliyon	WB
Jian-Feng Wu	27748887	Oncol Rep	
Jing Cui	33982835	J Cell Mol Med	WB

Stockage

Stockage:

Stocker à -20°C. Stable pendant un an après l'expédition.

Tampon de stockage:

PBS avec azoture de sodium à 0,02 % et glycérol à 50 % pH 7,3

L'aliquotage n'est pas nécessaire pour le stockage à -20C

*** Les 20ul contiennent 0,1% de BSA.

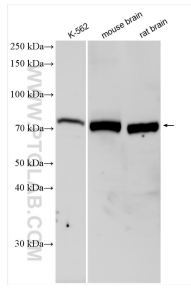
For technical support and original validation data for this product please contact:

T: 1 (888) 4PTGLAB (1-888-478-4522) (toll free in USA), or 1(312) 455-8498 (outside USA)

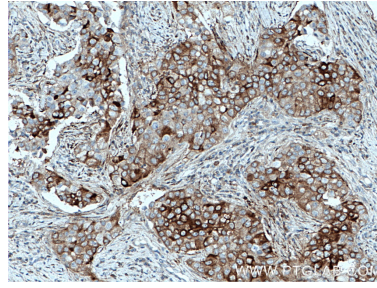
E: proteintech@ptglab.com
W: ptglab.com

This product is exclusively available under Proteintech Group brand and is not available to purchase from any other manufacturer.

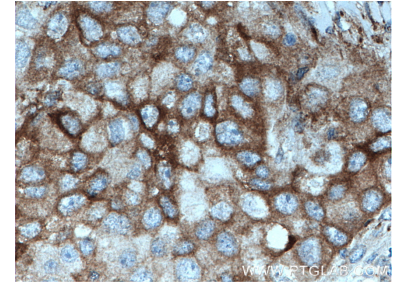
Données de validation sélectionnées



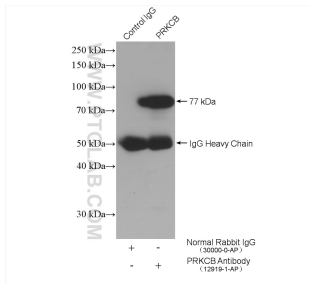
Various lysates were subjected to SDS PAGE followed by western blot with 12919-1-AP (PKC Beta antibody) at dilution of 1:4000 incubated at room temperature for 1.5 hours.



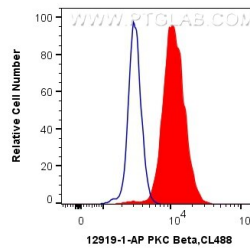
Immunohistochemical analysis of paraffin-embedded human breast cancer tissue slide using 12919-1-AP (PKC beta antibody) at dilution of 1:200 (under 10x lens).



Immunohistochemical analysis of paraffin-embedded human breast cancer tissue slide using 12919-1-AP (PKC beta antibody) at dilution of 1:200 (under 40x lens).



IP result of anti-PKC beta (IP:12919-1-AP, 4ug; Detection:12919-1-AP 1:1000) with mouse brain tissue lysate 4000 ug.



1x10⁶ K-562 cells were intracellularly stained with 0.4 ug Anti-Human PKC Beta (12919-1-AP) and CoraLite®488-Conjugated AffiniPure Goat Anti-Rabbit IgG(H+L) at dilution 1:1000 (red), or 0.4 ug Control Antibody. Cells were fixed with 4% PFA and permeabilized with Flow Cytometry Perm Buffer (PF00011-C).